

TARA xTOOL Thermostat module with 2 valves - Matte Black

TARA

ST 060 112 8892



- cover plate Ø 124 mm
- rosette Ø 55 mm
- temperature control handle with safety limit stop at 38°C
- thermostat cartridge
- 2x head part with cut-to-length spindle and sleeve



Matte Black

ST 060 112 8892-33



Brushed Light Gold

ST 060 112 8892-27

Individual components of this set

You need the following components for this set

1x 36 503 979-33



2x 36 607 892-33



ST 060 112 8892

Error: Subreport could not be shown.




- rosette Ø 55 mm
- head part with cut-to-length spindle and sleeve
- WRAS 2011026, 2010066

	Matte Black	36 607 892-3
	Chrome	36 607 892-0
	Brushed Platinum	36 607 892-0
	Platinum	36 607 892-0
	Dark Chrome	36 607 892-1
	Brushed Durabronze (23kt Gold)	36 607 892-2
	Brushed Bronze	36 607 892-4
	Brushed Champagne (22kt Gold)	36 607 892-4
	Champagne (22kt Gold)	36 607 892-4
	Brushed Chrome	36 607 892-9
	Brushed Dark Platinum	36 607 892-9

ST 060 112 8892

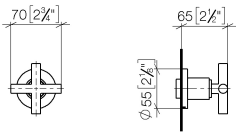
:3
—
0
—
6
—
8
—
9
—
8
—
2
—
6
—
7
—
3
—
9
—

Required miscellaneous

	Wall valve 1/2" -	35 607 970-90
	•max. recess depth 145 mm	0010
	•min. recess depth 85 mm	

ST 060 112 8892

mm [inches]



Certificates

IAPMO_4976	DVGW_DW-6501DN0	WRAS_2010	LGA_29	LGA_29
DVGW_DW-6512DN0	WRAS_2011			

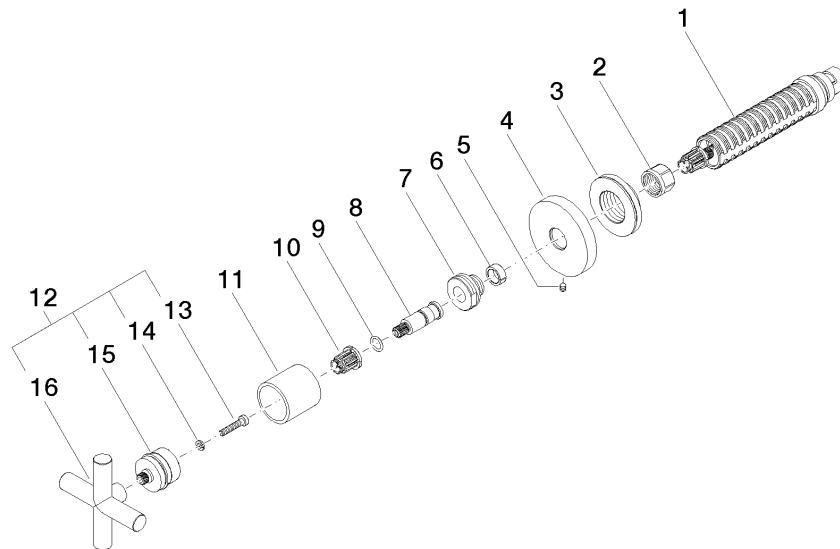
Codes & Standards

ADA	ASME A112.18.1	ASME A112.18.1/CSA B125.1	cUPC
DIN 4109	EN 1111	EN 200	ISO 3822
Scottish Water Byelaws	UK Water Supply Regulations	Ü-Zeichen	

ST 060 112 8892

Product version up to 10/27/2020

Product version from 10/27/2020





TARA xTOOL Thermostat module with 2 valves - Matte Black

TARA

ST 060 112 8892

Spare parts list

Product version up to 10/27/2020

Product version from 10/27/2020

No.	Item Number	Name	Quantity used	Delivery time
	90 90 03 143 00 90	top	16	2