

ST 110 106 2790



- 234mm projection
- pivotable spout 360°
- spout, end-piece with 20° rotation
- air-enriched flow and spray flow
- automatic spout/shower diverter
- height of mixer 337 mm
- height up to aerator 297 mm
- single-lever mixer hole diameter 35 mm
- hole diameter rinsing spray 32mm
- 2 x pressure hose with 3/8" cap nut
- fabric braided hose 1500 mm
- sprayface with anti-scaling system
- max. flow 5.7 l/min at 3 bar flow pressure
- lead-free
- This product can help a building meet the requirements of Green Building Rating Systems, e.g. LEED®, BREEAM®, DGNB

### Individual components of this set

You need the following components for this set



1x 27 721 970-28



1x 33 826 790-28 0010

# ELIO Single-lever mixer with rinsing spray set - Brushed Durabrand (23kt Gold)

ELIO

ST 110 106 2790



Fits: ELIO, TARA, TARA ULTRA

- with round rosette
- spray flow
- automatic spout/shower diverter
- height of mixer 191 mm
- hole diameter rinsing spray 32mm
- fabric braided hose 1500 mm
- sprayface with anti-scaling system
- lead-free

Can only be combined with 33826790, 32800790, 33826888, 32815888, 20815892, 33826875.

Intrinsic protection against back flow.

Button has to be pressed while using.

	Brushed Durabrand (23kt Gold)	27 721 970-2
	Chrome	27 721 970-0
	Brushed Platinum	27 721 970-0
	Platinum	27 721 970-0
	Durabrand (23kt Gold)	27 721 970-0
	Dark Chrome	27 721 970-1
	Matte Black	27 721 970-3
	Brushed Champagne (22kt Gold)	27 721 970-4
	Champagne (22kt Gold)	27 721 970-4
	Brushed Chrome	27 721 970-9
	Brushed Dark Platinum	27 721 970-9



ELIO Single-lever mixer with rinsing spray set - Brushed Durabrass (23kt Gold)

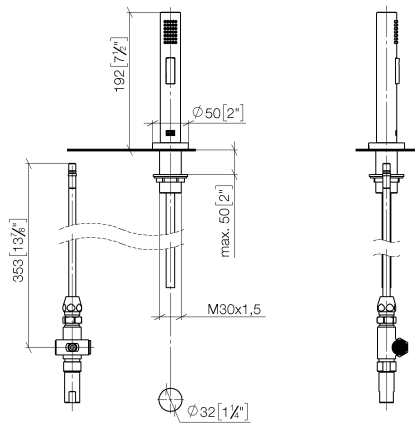
ELIO

ST 110 106 2790

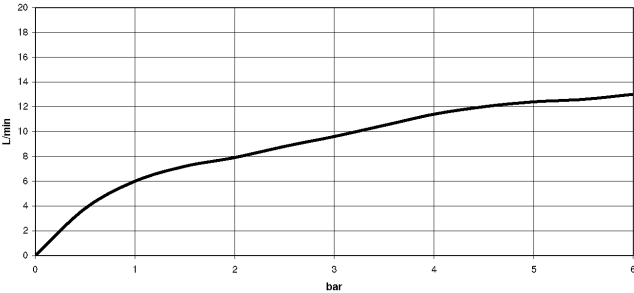
:8  
—  
:0  
—  
:6  
—  
:8  
—  
:9  
—  
9  
—  
:3  
—  
6  
—  
:7  
—  
:3  
—  
:9  
—

ST 110 106 2790

mm [inches]



### Flow rate chart



### Certificates

LGA\_29      IAPMO\_N-4976      IAPMO\_6      LGA\_18      Belgaqua\_21-027-2



ELIO Single-lever mixer with rinsing spray set - Brushed Durabrass (23kt Gold)

ELIO

ST 110 106 2790

Codes & Standards

DIN 4109	EN 1717	ISO 3822	NSF372
NSF61	Ü-Zeichen		



## ELIO Single-lever mixer with rinsing spray set - Brushed Durabron (23kt Gold)

---

ELIO

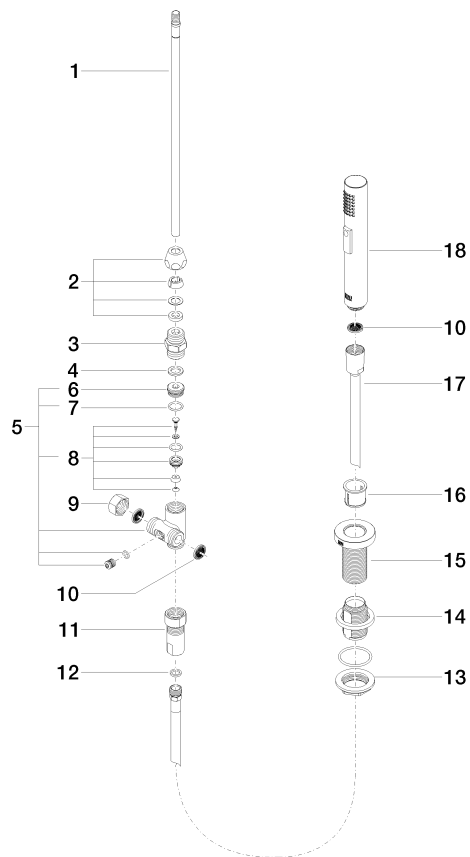
ST 110 106 2790

ST 110 106 2790

Product version up to 10/27/2020

**Product version from 10/27/2020**

Parts for other  
finishes can be found  
here: Chrome





ELIO Single-lever mixer with rinsing spray set - Brushed Durabrass (23kt Gold)

ELIO

ST 110 106 2790

Spare parts list

Product version up to 10/27/2020

Product version from 10/27/2020

No.	Item Number	Name	Quantity used	Delivery time
	04 24 02 046 01-07	pipe	19	10



ST 110 106 2790



- 234mm projection
  - pivotable spout 360°
  - spout, end-piece with 20° rotation
  - air-enriched flow
  - height of mixer 337 mm
  - height up to aerator 297 mm
  - single-lever mixer hole diameter 35mm
  - 2x US pressure hose, 3/8"
  - max. flow 5.7 l/min at 3 bar flow pressure
  - lead-free
  - This product can help a building meet the requirements of Green Building Rating Systems, e.g. LEED®, BREEAM®, DGNB
- Single-lever mixer for combining with rinsing/Profi spray only**

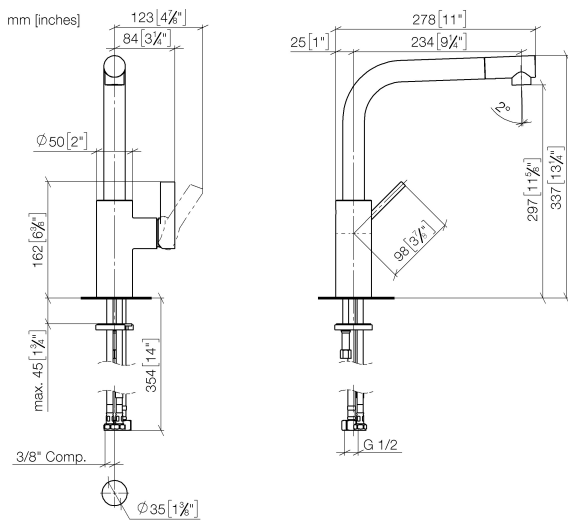
Single-lever mixer for combining with rinsing/Profi spray only

Required miscellaneous

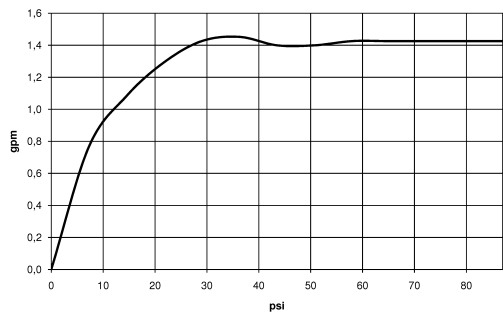


**Rinsing spray set - Brushed  
Durabross (23kt Gold)** 27 721 970-28

ST 110 106 2790



Flow rate chart



Certificates

IAPMO\_6397



ELIO Single-lever mixer with rinsing spray set - Brushed Durabrass (23kt Gold)

ELIO

ST 110 106 2790

Codes & Standards

ADA	ASME A112.18.1/CSA B125.1	California Energy Commission (CEC)	NSF/ANSI 372
NSF/ANSI/CAN 61	NSF372		



## ELIO Single-lever mixer with rinsing spray set - Brushed Durabronz (23kt Gold)

---

ELIO

ST 110 106 2790

ST 110 106 2790

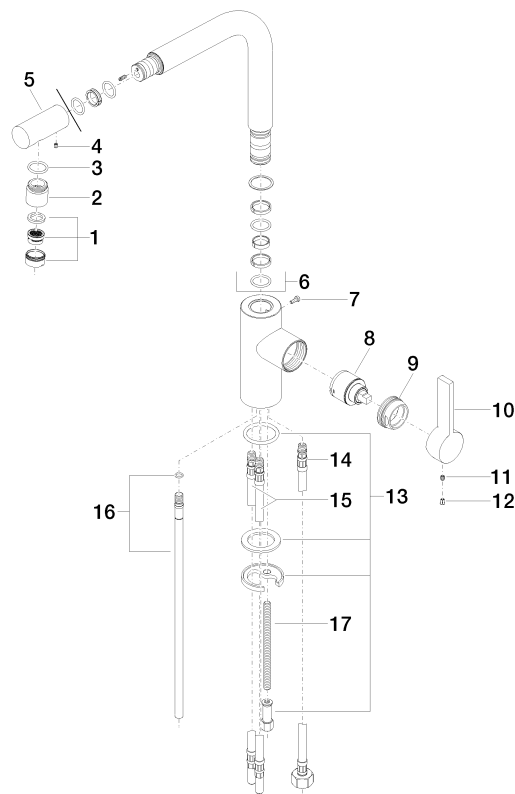
Product version from 5/31/2010 to 5/15/2020

Product version from 5/15/2020 to 4/26/2021

Product version from 4/26/2021 to 5/5/2021

Product version from 5/5/2021

**Product version from 6/1/2022**



ST 110 106 2790

### Spare parts list

Product version from 5/31/2010 to 5/15/2020

Product version from 5/15/2020 to 4/26/2021

Product version from 4/26/2021 to 5/5/2021

Product version from 5/5/2021

**Product version from 6/1/2022**