

TARA ULTRA Two-hole mixer with individual rosettes with profi spray set -  
Brushed Dark Platinum

TARA ULTRA

ST 110 110 2875



- 241mm projection
- pivotable spout 360°
- Optional swivel limiter available with swivel limiter set 12 820 970 90
- air-enriched flow and spray flow
- height of mixer 373 mm
- test
- height up to aerator 224 mm
- individual rosette 60 x 60 mm
- hole diameter spout 35 mm
- single-lever mixer hole diameter 35 mm
- profi spray hole diameter 30mm
- 2 x pressure hose with 3/8" cap nut
- automatic spout/shower diverter
- sprayface with anti-scaling system
- max. flow 5.7 l/min at 3 bar flow pressure
- suspended spray with stainless steel spring (can be pivoted and locked)
- lead-free
- This product can help a building meet the requirements of Green Building Rating Systems, e.g. LEED®, BREEAM®, DGNB

	Brushed Dark Platinum	ST 110 110 2875-99 0010
	Chrome	ST 110 110 2875-00 0010
	Brushed Platinum	ST 110 110 2875-06 0010
	Platinum	ST 110 110 2875-08 0010
	Dark Chrome	ST 110 110 2875-19 0010
	Brushed Chrome	ST 110 110 2875-93 0010

Individual components of this set

You need the following components for this set



1x 32 815 875-99 0010



1x 27 799 970-99

## TARA ULTRA Two-hole mixer with individual rosettes with profi spray set - Brushed Dark Platinum












TARA ULTRA

ST 110 110 2875



- 241mm projection
- pivotable spout 360°
- Optional swivel limiter available with swivel limiter set 12 820 970 90
- air-enriched flow
- height of mixer 373 mm
- height up to aerator 224 mm
- individual rosette 60 x 60 mm
- hole diameter spout 35 mm
- single-lever mixer hole diameter 35 mm
- 2 x pressure hose with 3/8" cap nut
- max. flow 5.7 l/min at 3 bar flow pressure
- lead-free
- This product can help a building meet the requirements of Green Building Rating Systems, e.g. LEED®, BREEAM®, DGNB

Operating unit can be positioned freely.

	Brushed Dark Platinum	32 815 875-99 001
	Chrome	32 815 875-00 001
	Brushed Platinum	32 815 875-06 001
	Platinum	32 815 875-08 001
	Durabronze (23kt Gold)	32 815 875-09 001
	Dark Chrome	32 815 875-19 001
	Brushed Durabronze (23kt Gold)	32 815 875-28 001
	Matte Black	32 815 875-33 001
	Brushed Champagne (22kt Gold)	32 815 875-46 001
	Champagne (22kt Gold)	32 815 875-47 001
	Brushed Chrome	32 815 875-93 001



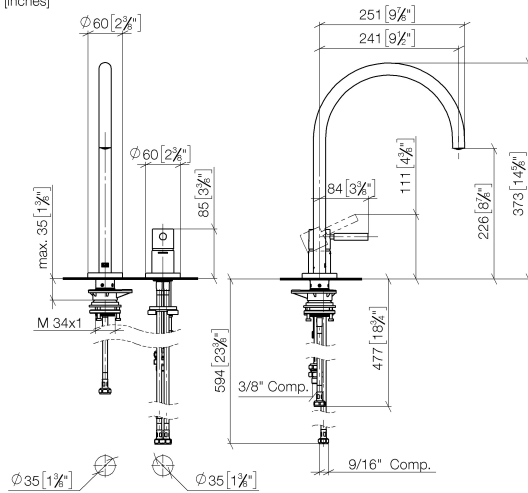
TARA ULTRA Two-hole mixer with individual rosettes with profi spray set -  
Brushed Dark Platinum

TARA ULTRA

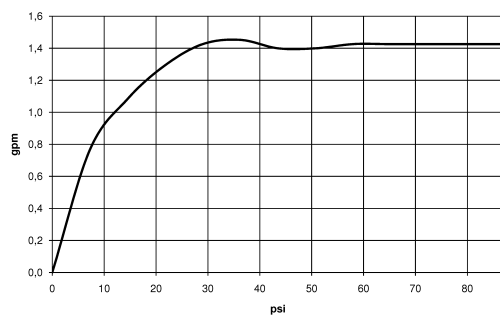
ST 110 110 2875

mm [inches]

1:5



### Flow rate chart





## TARA ULTRA Two-hole mixer with individual rosettes with profi spray set - Brushed Dark Platinum

---

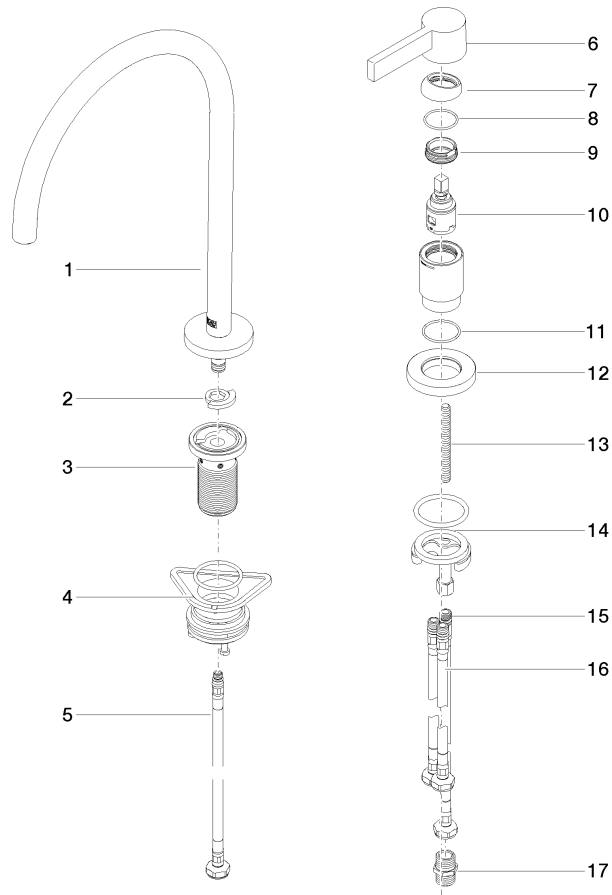
TARA ULTRA

ST 110 110 2875

### Codes & Standards

---

California Energy  
Commission  
(CEC)





TARA ULTRA Two-hole mixer with individual rosettes with profi spray set -  
Brushed Dark Platinum

TARA ULTRA

ST 110 110 2875

Spare parts list

No.	Item Number	Name	Quantity used	Delivery time
	90 28 22 291 00-99	spout	18	-

Spare part can no longer be ordered, please order the replacement item

TARA ULTRA Two-hole mixer with individual rosettes with profi spray set -  
Brushed Dark Platinum

TARA ULTRA

ST 110 110 2875



- spray flow
- automatic diverter for spout/Profi spray set
- height of mixer 665 mm
- individual rosette diameter 55mm
- profi spray hole diameter 30mm
- sprayface with anti-scaling system
- suspended spray with stainless steel spring (can be pivoted and locked)
- lead-free






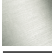
Can only be combined with 32815682, 33826861, 32815861, 33836888, 32816888, 20816892, 33836875, 32815875.

Intrinsic protection against back flow.

Operating unit can be positioned freely.

Button has to be pressed while using.

The profi spray can be installed either with or without a rosette

	Brushed Dark Platinum	27 799 970-9
	Chrome	27 799 970-0
	Brushed Platinum	27 799 970-0
	Platinum	27 799 970-0
	Dark Chrome	27 799 970-1
	Brushed Chrome	27 799 970-9





TARA ULTRA Two-hole mixer with individual rosettes with profi spray set -  
Brushed Dark Platinum

TARA ULTRA

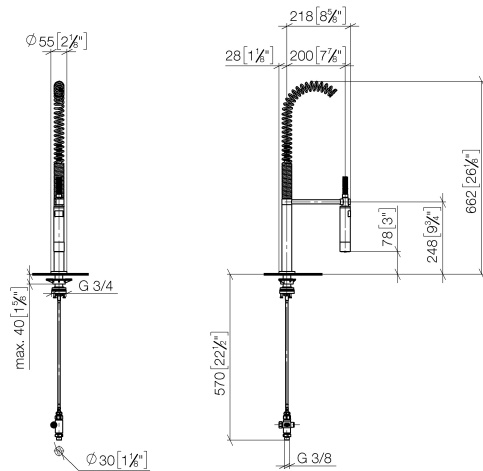
ST 110 110 2875

19  
—  
10  
—  
16  
—  
18  
—  
9  
—  
13  
—

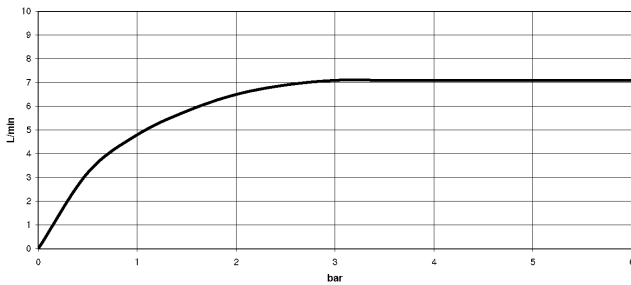
**TARA ULTRA Two-hole mixer with individual rosettes with profi spray set -  
Brushed Dark Platinum**

TARA ULTRA

ST 110 110 2875  
mm [inches]  
1:10



**Flow rate chart**



**Certificates**

LGA\_38

Belgaqua\_24-005-2



TARA ULTRA Two-hole mixer with individual rosettes with profi spray set -  
Brushed Dark Platinum

TARA ULTRA

ST 110 110 2875

Codes & Standards

DIN 4109	EN 1717	ISO 3822	Ü-Zeichen
----------	---------	----------	-----------



TARA ULTRA Two-hole mixer with individual rosettes with profi spray set -  
Brushed Dark Platinum

---

TARA ULTRA

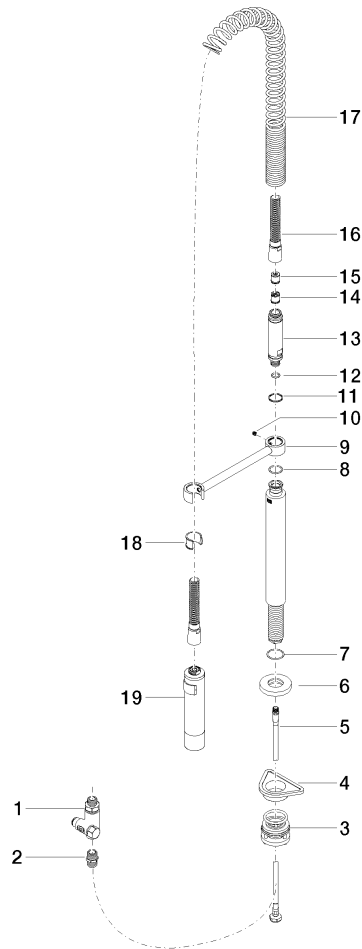
ST 110 110 2875

# TARA ULTRA Two-hole mixer with individual rosettes with profi spray set - Brushed Dark Platinum

TARA ULTRA

ST 110 110 2875

Parts for other  
finishes can be found  
here: [Chrome](#)





## TARA ULTRA Two-hole mixer with individual rosettes with profi spray set - Brushed Dark Platinum

---

TARA ULTRA

ST 110 110 2875

### **Spare parts list**