

TARA Two-hole mixer with individual rosettes with profi spray set - Dark Chrome

TARA

ST 110 112 4888



- 236mm projection
- pivotable spout 360°
- air-enriched flow and spray flow
- height of mixer 374 mm
- test
- height up to aerator 216 mm
- individual rosette 60 x mm
- hole diameter spout 35 mm
- single-lever mixer hole diameter 35 mm
- profi spray hole diameter 30mm
- 2 x pressure hose with 3/8" cap nut
- automatic spout/shower diverter
- sprayface with anti-scaling system
- max. flow 5.7 l/min at 3 bar flow pressure
- suspended spray with stainless steel spring (can be pivoted and locked)
- lead-free
- This product can help a building meet the requirements of Green Building Rating Systems, e.g. LEED®, BREEAM®, DGNB

	Dark Chrome	ST 110 112 4888-19 0010
	Chrome	ST 110 112 4888-00 0010
	Brushed Platinum	ST 110 112 4888-06 0010
	Platinum	ST 110 112 4888-08 0010
	Brushed Chrome	ST 110 112 4888-93 0010
	Brushed Dark Platinum	ST 110 112 4888-99 0010

Individual components of this set

You need the following components for this set



1x 32 815 888-19 0010



1x 27 789 970-19 0010

## TARA Two-hole mixer with individual rosettes with profi spray set - Dark Chrome

TARA

ST 110 112 4888



- 236mm projection
- pivotable spout 360°
- air-enriched flow
- height of mixer 374 mm
- height up to aerator 216 mm
- individual rosette 60 x mm
- hole diameter spout 35 mm
- single-lever mixer hole diameter 35 mm
- 2 x pressure hose with 3/8" cap nut
- max. flow 5.7 l/min at 3 bar flow pressure
- lead-free
- This product can help a building meet the requirements of Green Building Rating Systems, e.g. LEED®, BREEAM®, DGNB

Operating unit can be positioned freely.

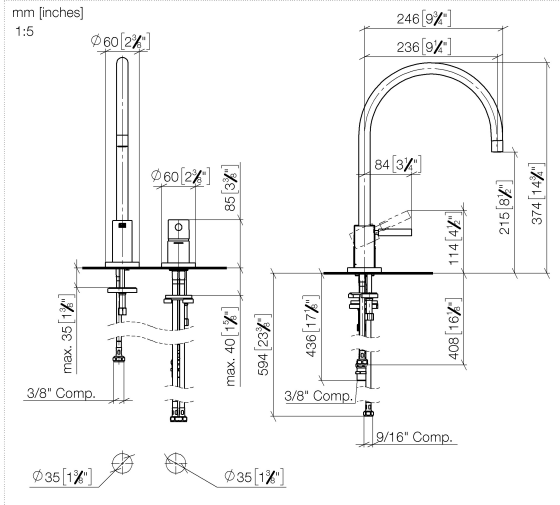
	Dark Chrome	32 815 888-19 001
	Chrome	32 815 888-00 001
	Brushed Platinum	32 815 888-06 001
	Platinum	32 815 888-08 001
	Durabronze (23kt Gold)	32 815 888-09 001
	Brushed Durabronze (23kt Gold)	32 815 888-28 001
	Matte Black	32 815 888-33 001
	Brushed Champagne (22kt Gold)	32 815 888-46 001
	Champagne (22kt Gold)	32 815 888-47 001
	Brushed Chrome	32 815 888-93 001
	Brushed Dark Platinum	32 815 888-99 001



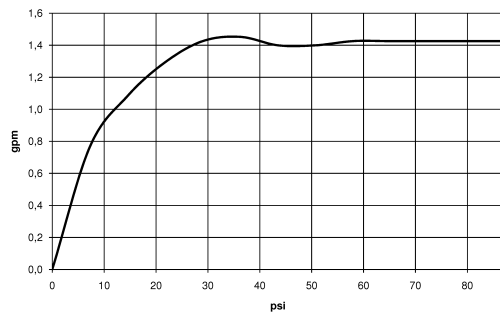
**TARA Two-hole mixer with individual rosettes with profi spray set - Dark Chrome**

TARA

ST 110 112 4888



**Flow rate chart**





## TARA Two-hole mixer with individual rosettes with profi spray set - Dark Chrome

---

TARA

ST 110 112 4888

### Codes & Standards

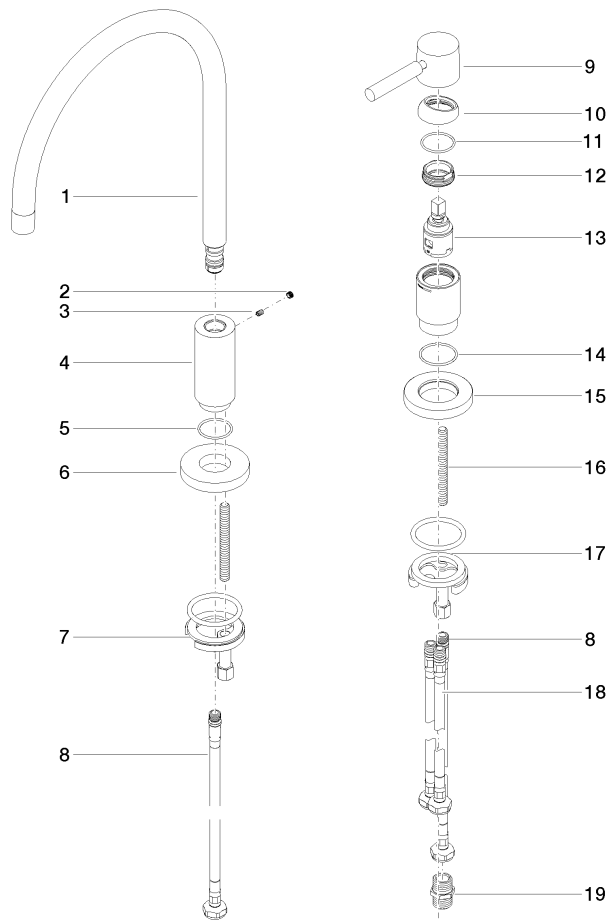
---

California Energy  
Commission  
(CEC)

# TARA Two-hole mixer with individual rosettes with profi spray set - Dark Chrome

TARA

ST 110 112 4888





TARA Two-hole mixer with individual rosettes with profi spray set - Dark Chrome

TARA

ST 110 112 4888

Spare parts list

No.	Item Number	Name	Quantity used	Delivery time
	90 28 22 226 02-19	spout	21	20

TARA Two-hole mixer with individual rosettes with profi spray set - Dark  
Chrome

TARA

ST 110 112 4888



Fits: ELIO, TARA, TARA ULTRA




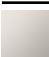


- spray flow
- automatic diverter for spout/Profi spray set
- height of mixer 665 mm
- individual rosette diameter 55mm
- profi spray hole diameter 30mm
- sprayface with anti-scaling system
- suspended spray with stainless steel spring (can be pivoted and locked)
- lead-free

The profi spray can be installed either with or without a rosette

Can only be combined with 32800790, 33826888, 32815888, 20815892, 33826875.

Intrinsic protection against back flow.

Button has to be pressed while using.

	Dark Chrome	27 789 970-19 001
	Chrome	27 789 970-00 001
	Brushed Platinum	27 789 970-06 001
	Platinum	27 789 970-08 001
	Brushed Chrome	27 789 970-93 001
	Brushed Dark Platinum	27 789 970-99 001





TARA Two-hole mixer with individual rosettes with profi spray set - Dark  
Chrome

TARA

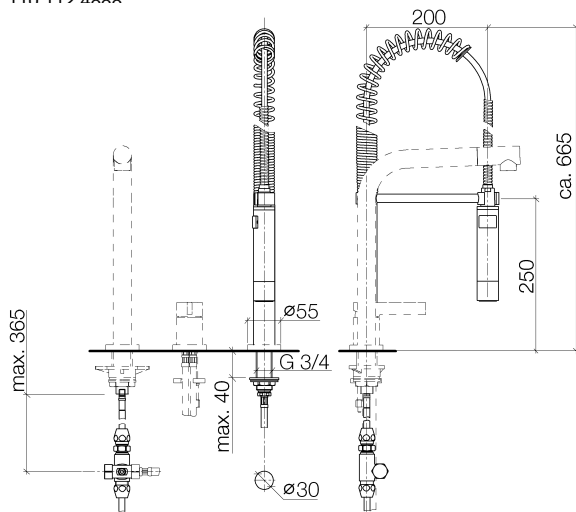
ST 110 112 4888

0  
—  
0  
—  
0  
—  
0  
—  
0  
—  
0  
—

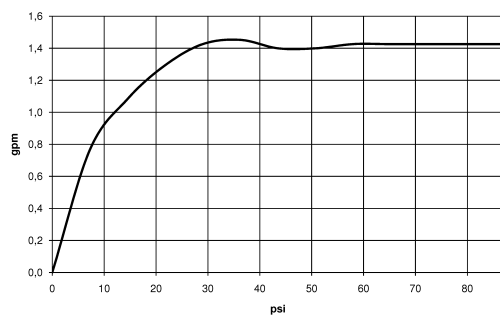
## TARA Two-hole mixer with individual rosettes with profi spray set - Dark Chrome

TARA

ST 110 112 4R8R



### Flow rate chart



### Certificates

IAPMO\_6



TARA Two-hole mixer with individual rosettes with profi spray set - Dark Chrome

TARA

ST 110 112 4888

Codes & Standards

NSF/ANSI 372	NSF372
--------------	--------



## TARA Two-hole mixer with individual rosettes with profi spray set - Dark Chrome

---

TARA

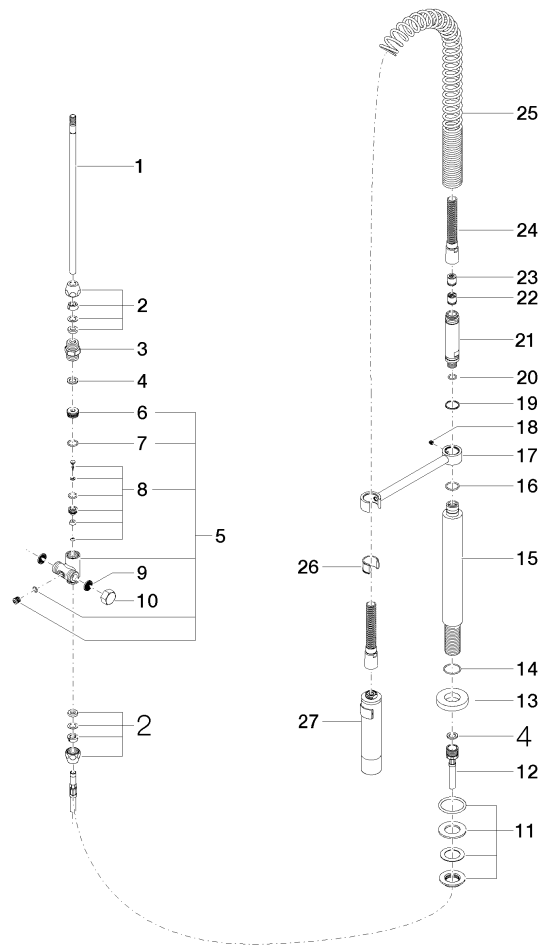
ST 110 112 4888

# TARA Two-hole mixer with individual rosettes with profi spray set - Dark Chrome

TARA

ST 110 112 4888

Parts for other  
finishes can be found  
here: [Chrome](#)





## TARA Two-hole mixer with individual rosettes with profi spray set - Dark Chrome

TARA

ST 110 112 4888

### **Spare parts list**