

TARA Three-hole mixer with rinsing spray set - Dark Chrome

TARA

ST 110 201 2892



- 235mm projection
- pivotable spout 360°
- air-enriched flow and spray flow
- height of mixer 370 mm
- height up to aerator 212 mm
- hole diameter spout 35 mm
- hole diameter valve 32 mm
- hole diameter rinsing spray 32mm
- fabric braided hose 1500 mm
- automatic spout/shower diverter
- sprayface with anti-scaling system
- max. flow 5.7 l/min at 3 bar flow pressure
- lead-free
- This product can help a building meet the requirements of Green Building Rating Systems, e.g. LEED®, BREEAM®, DGNB

| | | |
|--|-------------------------------|-------------------------|
| | Dark Chrome | ST 110 201 2892-19 0010 |
| | Chrome | ST 110 201 2892-00 0010 |
| | Brushed Platinum | ST 110 201 2892-06 0010 |
| | Platinum | ST 110 201 2892-08 0010 |
| | Durabron (23kt Gold) | ST 110 201 2892-09 0010 |
| | Brushed Durabron (23kt Gold) | ST 110 201 2892-28 0010 |
| | Matte Black | ST 110 201 2892-33 0010 |
| | Brushed Champagne (22kt Gold) | ST 110 201 2892-46 0010 |
| | Champagne (22kt Gold) | ST 110 201 2892-47 0010 |
| | Brushed Chrome | ST 110 201 2892-93 0010 |
| | Brushed Dark Platinum | ST 110 201 2892-99 0010 |

Individual components of this set

You need the following components for this set



1x 27 721 970-19



1x 20 815 892-19 0010

TARA Three-hole mixer with rinsing spray set - Dark Chrome

TARA

ST 110 201 2892



Fits: ELIO, TARA, TARA ULTRA

- with round rosette
- spray flow
- automatic spout/shower diverter
- height of mixer 191 mm
- hole diameter rinsing spray 32mm
- fabric braided hose 1500 mm
- sprayface with anti-scaling system
- lead-free

Can only be combined with 33826790, 32800790, 33826888, 32815888, 20815892, 33826875.

Intrinsic protection against back flow.

Button has to be pressed while using.

| | | |
|--|--------------------------------|--------------|
|  | Dark Chrome | 27 721 970-1 |
|  | Chrome | 27 721 970-0 |
|  | Brushed Platinum | 27 721 970-0 |
|  | Platinum | 27 721 970-0 |
|  | Durabronze (23kt Gold) | 27 721 970-0 |
|  | Brushed Durabronze (23kt Gold) | 27 721 970-2 |
|  | Matte Black | 27 721 970-3 |
|  | Brushed Champagne (22kt Gold) | 27 721 970-4 |
|  | Champagne (22kt Gold) | 27 721 970-4 |
|  | Brushed Chrome | 27 721 970-9 |
|  | Brushed Dark Platinum | 27 721 970-9 |



TARA Three-hole mixer with rinsing spray set - Dark Chrome

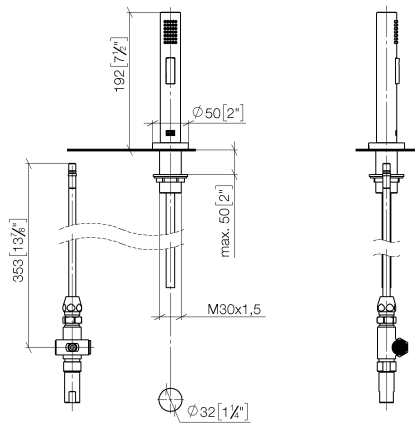
TARA

ST 110 201 2892

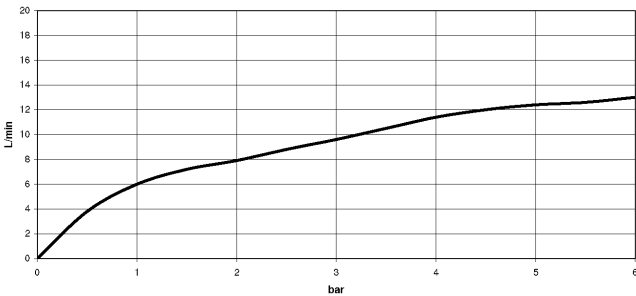
9
—
0
—
6
—
8
—
9
—
8
—
3
—
6
—
7
—
3
—
9
—

ST 110 201 2892

mm [inches]



Flow rate chart



Certificates

LGA_29 IAPMO_N-4976 IAPMO_6 LGA_18



TARA Three-hole mixer with rinsing spray set - Dark Chrome

TARA

ST 110 201 2892

Codes & Standards

DIN 4109

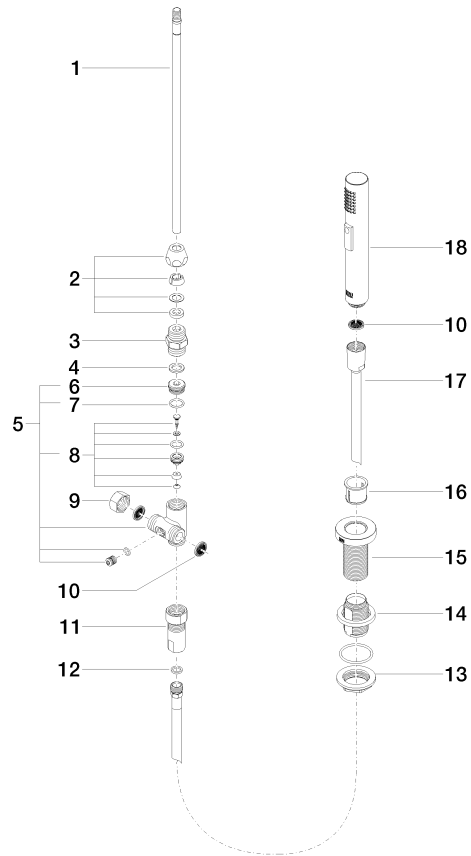
ISO 3822

NSF372

NSF61

Ü-Zeichen

Parts for other
finishes can be found
here: [Chrome](#)



ST 110 201 2892

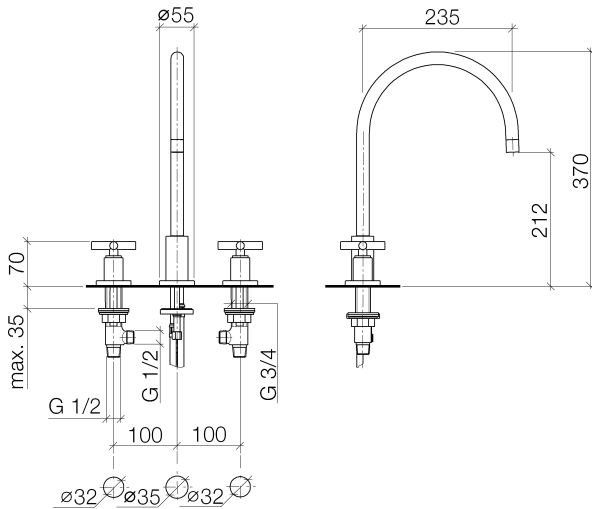
Spare parts list



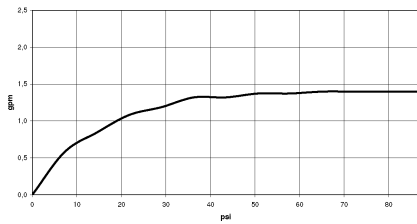
- 235mm projection
- pivotable spout 360°
- air-enriched flow
- height of mixer 370 mm
- height up to aerator 212 mm
- hole diameter spout 35 mm
- hole diameter valve 32 mm
- max. flow 5.7 l/min at 3 bar flow pressure
- lead-free
- This product can help a building meet the requirements of Green Building Rating Systems, e.g. LEED®, BREEAM®, DGNB

| | | |
|--|--------------------------------|-------------------|
|  | Dark Chrome | 20 815 892-19 001 |
|  | Chrome | 20 815 892-00 001 |
|  | Brushed Platinum | 20 815 892-06 001 |
|  | Platinum | 20 815 892-08 001 |
|  | Durabronze (23kt Gold) | 20 815 892-09 001 |
|  | Brushed Durabronze (23kt Gold) | 20 815 892-28 001 |
|  | Matte Black | 20 815 892-33 001 |
|  | Brushed Champagne (22kt Gold) | 20 815 892-46 001 |
|  | Champagne (22kt Gold) | 20 815 892-47 001 |
|  | Brushed Chrome | 20 815 892-93 001 |
|  | Brushed Dark Platinum | 20 815 892-99 001 |

ST 110 201 2892



Flow rate chart



Certificates

IAPMO_N-4

IAPMO_6



TARA Three-hole mixer with rinsing spray set - Dark Chrome

TARA

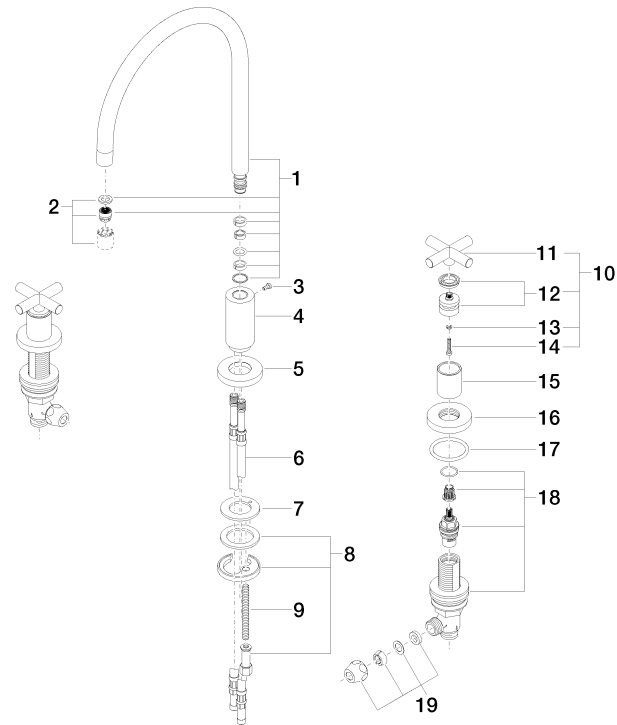
ST 110 201 2892

Codes & Standards

| | | | |
|--------------------|---------------------------------|--|--------------|
| ADA | ASME A112.18.1/CSA B125.1 | California Energy Commission (CEC) | NSF/ANSI 372 |
| NSF/ANSI/CAN 61 | NSF372 | NSF61 | |

ST 110 201 2892

Parts for other finishes can be found here: [Chrome](#)



Spare parts list