

TARA Three-hole mixer with rinsing spray set - Brushed Dark Platinum TARA

ST 110 201 2892



- 235mm projection
- pivotable spout 360°
- air-enriched flow and spray flow
- height of mixer 370 mm
- height up to aerator 212 mm
- hole diameter spout 35 mm
- hole diameter valve 32 mm
- hole diameter rinsing spray 32mm
- fabric braided hose 1500 mm
- automatic spout/shower diverter
- sprayface with anti-scaling system
- max. flow 5.7 l/min at 3 bar flow pressure
- lead-free
- This product can help a building meet the requirements of Green Building Rating Systems, e.g. LEED®, BREEAM®, DGNB

	Brushed Dark Platinum	ST 110 201 2892-99 0010
	Chrome	ST 110 201 2892-00 0010
	Brushed Platinum	ST 110 201 2892-06 0010
	Platinum	ST 110 201 2892-08 0010
	Durabrand (23kt Gold)	ST 110 201 2892-09 0010
	Dark Chrome	ST 110 201 2892-19 0010
	Brushed Durabrand (23kt Gold)	ST 110 201 2892-28 0010
	Matte Black	ST 110 201 2892-33 0010
	Brushed Champagne (22kt Gold)	ST 110 201 2892-46 0010
	Champagne (22kt Gold)	ST 110 201 2892-47 0010
	Brushed Chrome	ST 110 201 2892-93 0010

Individual components of this set

You need the following components for this set



1x 27 721 970-99



1x 20 815 892-99 0010

TARA Three-hole mixer with rinsing spray set - Brushed Dark Platinum

TARA

ST 110 201 2892











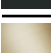


Fits: ELIO, TARA, TARA ULTRA

- with round rosette
- spray flow
- automatic spout/shower diverter
- height of mixer 191 mm
- hole diameter rinsing spray 32mm
- fabric braided hose 1500 mm
- sprayface with anti-scaling system
- lead-free

Can only be combined with 33826790, 32800790, 33826888, 32815888, 20815892, 33826875.

Intrinsic protection against back flow.

Button has to be pressed while using.

	Brushed Dark Platinum	27 721 970-9
	Chrome	27 721 970-0
	Brushed Platinum	27 721 970-0
	Platinum	27 721 970-0
	Durabrand (23kt Gold)	27 721 970-0
	Dark Chrome	27 721 970-1
	Brushed Durabrand (23kt Gold)	27 721 970-2
	Matte Black	27 721 970-3
	Brushed Champagne (22kt Gold)	27 721 970-4
	Champagne (22kt Gold)	27 721 970-4
	Brushed Chrome	27 721 970-9



TARA Three-hole mixer with rinsing spray set - Brushed Dark Platinum

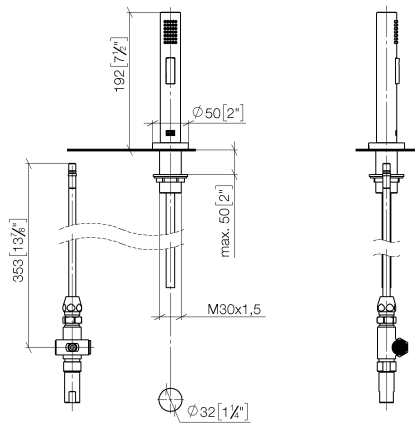
TARA

ST 110 201 2892

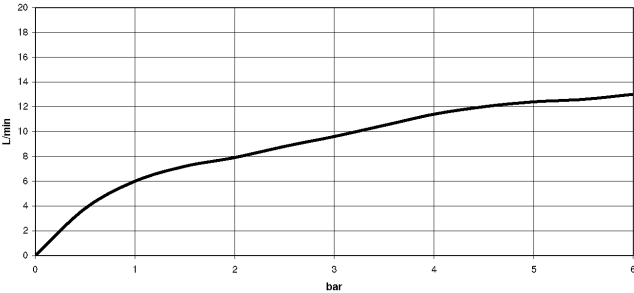
9
—
0
—
6
—
8
—
9
—
9
—
8
—
3
—
6
—
7
—
3
—

ST 110 201 2892

mm [inches]



Flow rate chart



Certificates

LGA_29 IAPMO_N-4976 IAPMO_6 LGA_18 Belgaqua_21-027-2



TARA Three-hole mixer with rinsing spray set - Brushed Dark Platinum

TARA

ST 110 201 2892

Codes & Standards

DIN 4109	EN 1717	ISO 3822	NSF372
NSF61	Ü-Zeichen		



TARA Three-hole mixer with rinsing spray set - Brushed Dark Platinum

TARA

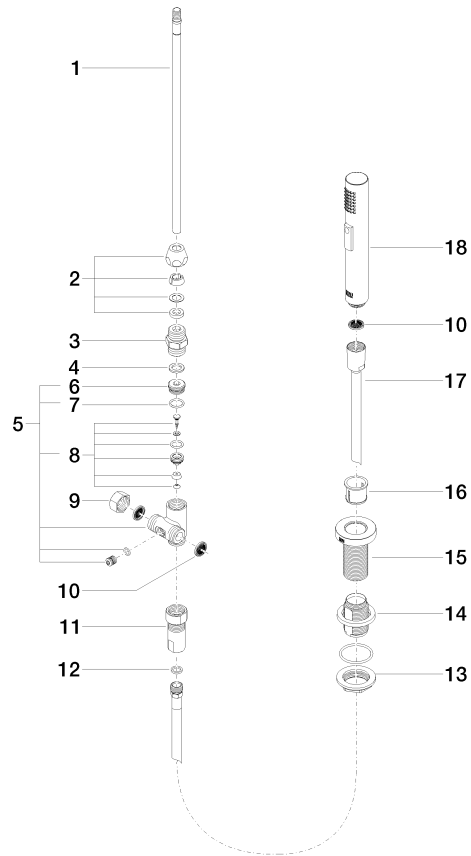
ST 110 201 2892

ST 110 201 2892

Product version up to 10/27/2020

Product version from 10/27/2020

Parts for other
finishes can be found
here: [Chrome](#)





TARA Three-hole mixer with rinsing spray set - Brushed Dark Platinum

TARA

ST 110 201 2892

Spare parts list

Product version up to 10/27/2020

Product version from 10/27/2020

No.	Item Number	Name	Quantity used	Delivery time
	04 24 02 046 01-07	pipe	19	10

TARA Three-hole mixer with rinsing spray set - Brushed Dark Platinum

TARA

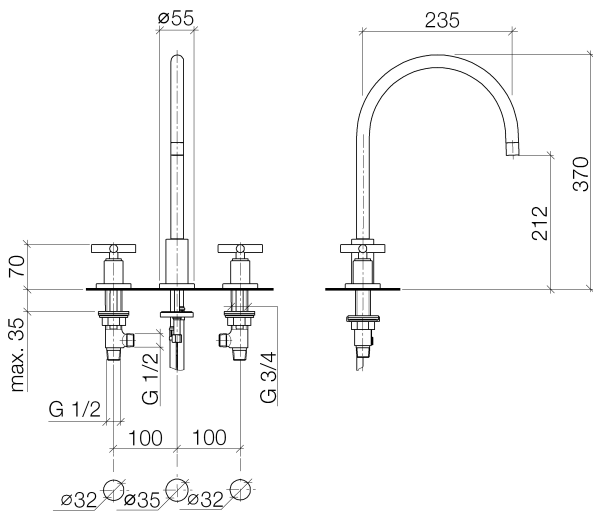
ST 110 201 2892



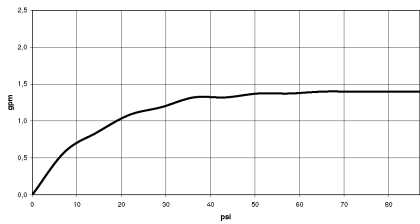
- 235mm projection
- pivotable spout 360°
- air-enriched flow
- height of mixer 370 mm
- height up to aerator 212 mm
- hole diameter spout 35 mm
- hole diameter valve 32 mm
- max. flow 5.7 l/min at 3 bar flow pressure
- lead-free
- This product can help a building meet the requirements of Green Building Rating Systems, e.g. LEED®, BREEAM®, DGNB

	Brushed Dark Platinum	20 815 892-99 001
	Chrome	20 815 892-00 001
	Brushed Platinum	20 815 892-06 001
	Platinum	20 815 892-08 001
	Durabronze (23kt Gold)	20 815 892-09 001
	Dark Chrome	20 815 892-19 001
	Brushed Durabronze (23kt Gold)	20 815 892-28 001
	Matte Black	20 815 892-33 001
	Brushed Champagne (22kt Gold)	20 815 892-46 001
	Champagne (22kt Gold)	20 815 892-47 001
	Brushed Chrome	20 815 892-93 001

ST 110 201 2892



Flow rate chart



Certificates

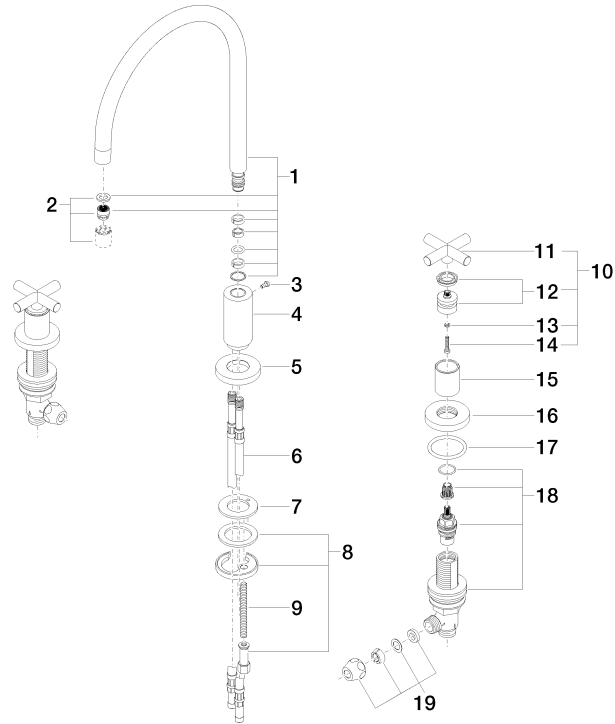
IAPMO_4976 IAPMO_N-4 IAPMO_6

Codes & Standards

ADA	ASME A112.18.1	ASME A112.18.1/CSA B125.1	California Energy Commission (CEC)
cUPC	NSF/ANSI 372	NSF/ANSI/CAN 61	NSF372
NSF61			

Product version from 6/30/2009

Parts for other
finishes can be found
here: [Chrome](#)



Spare parts list

Product version from 6/30/2009