









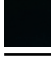
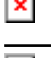






10 125 970



- for closing

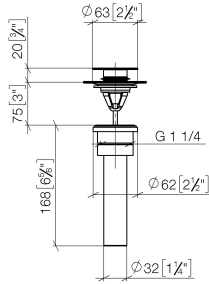
Only suitable for basins with an overflow.

Fits: IMO, LULU, MADISON, MEM, TARA,
CL.1, LISSÉ, VAIA, META, CYO

	Brushed Chrome	10 125 970-93 0010
	Chrome	10 125 970-00 0010
	Brushed Platinum	10 125 970-06 0010
	Platinum	10 125 970-08 0010
	Durabrand (23kt Gold)	10 125 970-09 0010
	Dark Chrome	10 125 970-19 0010
	Light Gold	10 125 970-26 0010
	Brushed Light Gold	10 125 970-27 0010
	Brushed Durabrand (23kt Gold)	10 125 970-28 0010
	Matte Black	10 125 970-33 0010
	Platinum / Brushed Platinum	10 125 970-36 0010
	Durabrand / Brushed Durabrand (23kt Gold)	10 125 970-38 0010
	Brushed Bronze	10 125 970-42 0010
	Brushed Champagne (22kt Gold)	10 125 970-46 0010
	Champagne (22kt Gold)	10 125 970-47 0010
	Brushed Dark Platinum	10 125 970-99 0010

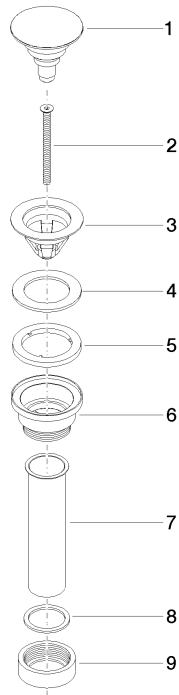
10 125 970

mm [inches]



10 125 970

Parts for other finishes can be found here: [Chrome](#)



Spare parts list

No.	Item Number	Name	Quantity used	Delivery time
1	04 31 20 096 00-93	plug	1	-
Spare part can no longer be ordered, please order the replacement item				
2	09 30 30 179 90	screw	1	2
3	09 11 01 038-93	cup	1	20
4	09 14 05 061 90	seal	1	2
5	09 14 03 153 90	seal	1	2
6	09 11 10 156-93	connection	1	20
7	09 28 20 055-93	pipe	1	20
8	09 14 05 062 90	seal	1	2
9	09 23 30 073-93	nut	1	20