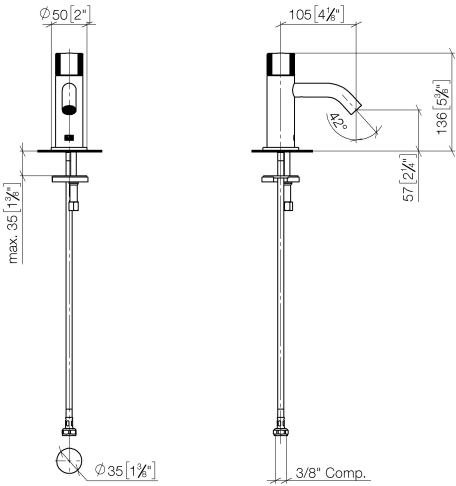





- 105mm projection
- fixed spout
- circular, air-enriched flow
- height of mixer 136 mm
- height up to aerator 57 mm
- hole diameter 35 mm
- 1/2" connection
- rosette Ø 50 mm
- 2 x pressure hose with 3/8" cap nut
- max. flow 4.5 l/min
- lead-free
- This product can help a building meet the requirements of Green Building Rating Systems, e.g. LEED®, BREEAM®, DGNB

	Brushed Bronze	17 500 660-42 0010
	Chrome	17 500 660-00 0010
	Brushed Platinum	17 500 660-06 0010
	Dark Chrome	17 500 660-19 0010
	Light Gold	17 500 660-26 0010
	Brushed Light Gold	17 500 660-27 0010
	Matte Black	17 500 660-33 0010
	Brushed Champagne (22kt Gold)	17 500 660-46 0010
	Champagne (22kt Gold)	17 500 660-47 0010
	Brushed Chrome	17 500 660-93 0010
	Brushed Dark Platinum	17 500 660-99 0010

mm [inches]

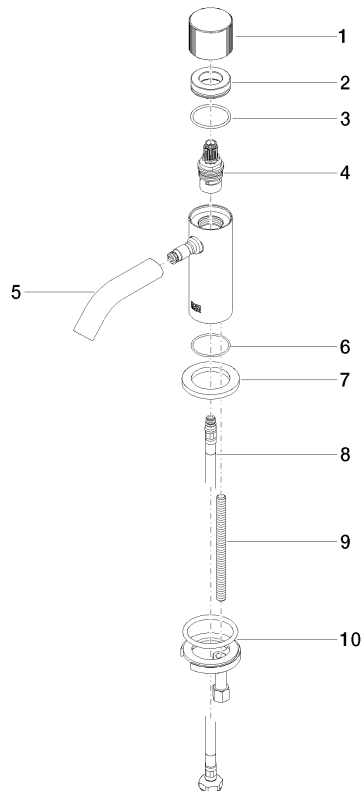


Codes & Standards			
ASME A112.18.1	California Energy Commission (CEC)	cUPC	EPA WaterSense
NSF372	NSF61	WaterSense	

Certificates and sustainability			
IAPMO_N-4	IAPMO_8834	IAPMO_4976	IAPMO_6

17 500 660 Product version from 10/1/2023

Parts for other  
finishes can be found  
here: [Chrome](#)



## Spare parts list

No.	Item Number	Name	Quantity used	Delivery time
7	09 27 66 006-42	rosette	1.00	60
10	04 30 11 038 00 90	fixing set	1.00	2
6	09 14 10 202 90	seal	1.00	2
9	09 31 11 012 90	pin	1.00	2
1	09 20 66 012-42	handle	1.00	60
4	90 90 03 135 00 90	top	1.00	2
2	09 21 02 307-42	cover	1.00	60
8	04 30 04 102 00 90	High pressure hose 3/8" -	1.00	2
3	09 14 10 040 90	seal	1.00	2
5	90 11 06 212 01-42	spout	1.00	30