

VAIA Three-hole bridge mixer Pull-down with spray function - Brushed Dark Platinum

VAIA

19 870 809



- 240mm projection
- pivotable spout 360°
- Optional swivel limiter available with swivel limiter set 12 823 970 90
- air-enriched flow and spray flow
- height of mixer 393 mm
- height up to laminar flow regulator 204 mm
- hole diameter 35 mm
- 2 x pressure hose with 3/8" cap nut
- 1800 mm metal shower hose
- sprayface with anti-scaling system
- max. flow 5.7 l/min at 3 bar flow pressure
- lead-free
- This product can help a building meet the requirements of Green Building Rating Systems, e.g. LEED®, BREEAM®, DGNB

Intrinsic protection against back flow.

Switch back and forth between aerator and spray mode while water is running.

| | | |
|--|--------------------------------|--------------------|
| | Brushed Dark Platinum | 19 870 809-99 0010 |
| | Chrome | 19 870 809-00 0010 |
| | Brushed Platinum | 19 870 809-06 0010 |
| | Platinum | 19 870 809-08 0010 |
| | Durabronze (23kt Gold) | 19 870 809-09 0010 |
| | Dark Chrome | 19 870 809-19 0010 |
| | Brushed Durabronze (23kt Gold) | 19 870 809-28 0010 |
| | Matte Black | 19 870 809-33 0010 |
| | Brushed Champagne (22kt Gold) | 19 870 809-46 0010 |
| | Champagne (22kt Gold) | 19 870 809-47 0010 |
| | Brushed Chrome | 19 870 809-93 0010 |

Recommended miscellaneous

Swivel limitation set -

12 823 970 90



Recommended miscellaneous

**VAIA Dispenser with rosette -
Brushed Dark Platinum**

82 434 809-99



Recommended miscellaneous

**VAIA AIR SWITCH Control button - 10 713 809-99
Brushed Dark Platinum**

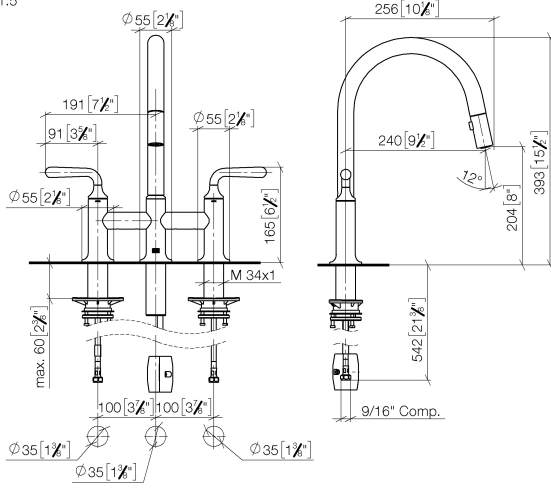




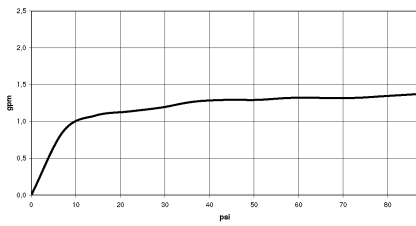
VAIA Three-hole bridge mixer Pull-down with spray function - Brushed Dark Platinum

VAIA

19 870 809
mm [inches]
1:5



Flow rate chart

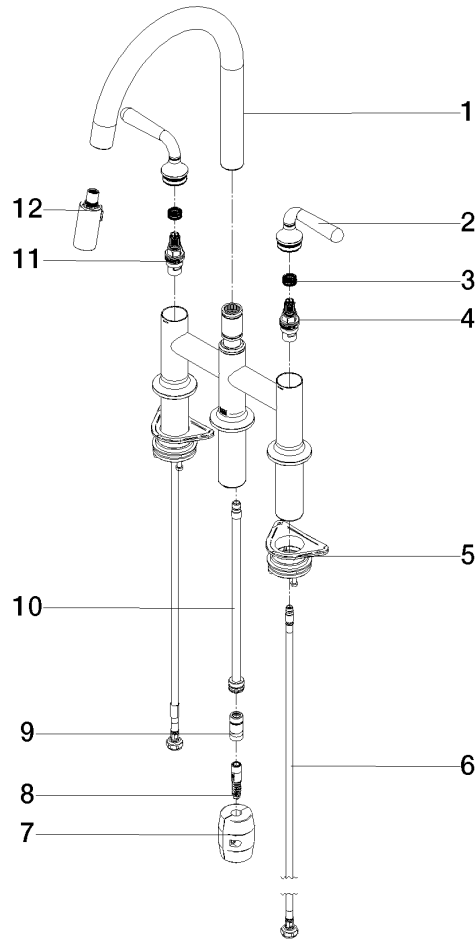


Codes & Standards

California Energy
Commission
(CEC)

19 870 809

Product version from 7/1/2023





VAIA Three-hole bridge mixer Pull-down with spray function - Brushed Dark
Platinum

VAIA

19 870 809

Spare parts list

Product version from 7/1/2023

| No. | Item Number | Name | Quantity used | Delivery time |
|-----|--------------------|-------|---------------|---------------|
| | 90 28 22 397 00-99 | spout | 16 | 30 |