

## VAIA Three-hole bridge mixer Pull-down with spray function - Platinum

VAIA

19 875 809 Product version from 7/1/2023



- 240mm projection
- pivotable spout 360°
- Optional swivel limiter available with swivel limiter set 12 823 970 90
- air-enriched flow and spray flow
- height of mixer 393 mm
- height up to laminar flow regulator 204 mm
- hole diameter 35 mm
- 2 x pressure hose with 3/8" cap nut
- 1800 mm metal shower hose
- sprayface with anti-scaling system
- max. flow 5.7 l/min at 3 bar flow pressure
- lead-free
- Flow modes can be changed while the water is running
- This product can help a building meet the requirements of Green Building Rating Systems, e.g. LEED®, BREEAM®, DGNB

Intrinsic protection against back flow.

Switch back and forth between aerator and spray mode while water is running.

|   |                                |                    |
|---|--------------------------------|--------------------|
|    | Platinum                       | 19 875 809-08 0010 |
|    | Chrome                         | 19 875 809-00 0010 |
|    | Brushed Platinum               | 19 875 809-06 0010 |
|    | Durabronze (23kt Gold)         | 19 875 809-09 0010 |
|    | Dark Chrome                    | 19 875 809-19 0010 |
|    | Brushed Durabronze (23kt Gold) | 19 875 809-28 0010 |
|    | Matte Black                    | 19 875 809-33 0010 |
|    | Brushed Bronze                 | 19 875 809-42 0010 |
|    | Brushed Champagne (22kt Gold)  | 19 875 809-46 0010 |
|   | Champagne (22kt Gold)          | 19 875 809-47 0010 |
|  | Brushed Chrome                 | 19 875 809-93 0010 |
|  | Brushed Dark Platinum          | 19 875 809-99 0010 |

### Recommended miscellaneous

**Swivel limitation set -**

12 823 970 90



### Recommended miscellaneous

**Swivel limitation set -**

12 823 970 90

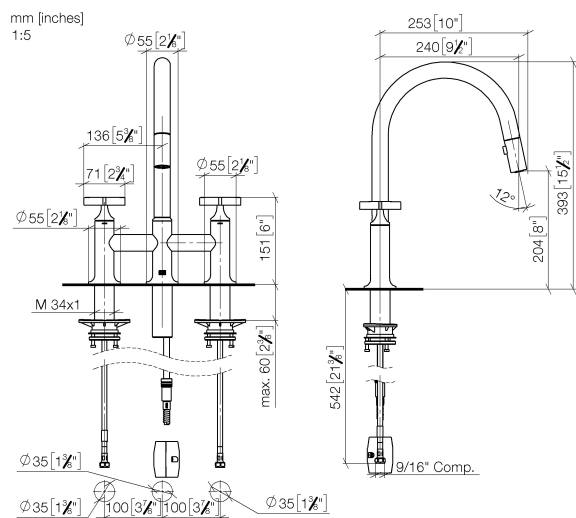


### Recommended miscellaneous

**VAIA AIR SWITCH Control button - 10 713 809-08  
Platinum**



19 875 809 Product version from 7/1/2023

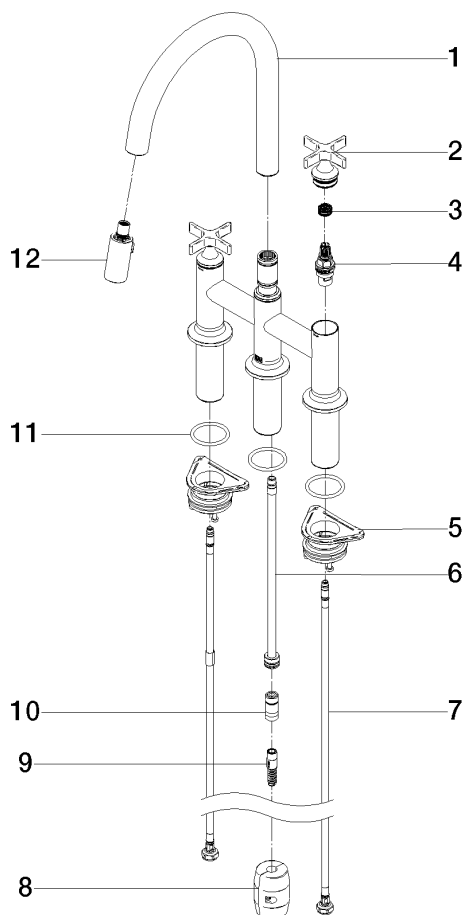


## Codes & Standards

|        |                |                                    |      |
|--------|----------------|------------------------------------|------|
| ADA    | ASME A112.18.1 | California Energy Commission (CEC) | cUPC |
| NSF372 | NSF61          |                                    |      |

## Certificates and sustainability

IAPMO\_4976 IAPMO\_N-4976 IAPMO\_6397



## Spare parts list

| No.  | Item Number        | Name        | Quantity used | Delivery time |
|--|--------------------|-------------|---------------|---------------|
| 1  | 90 28 22 397 00-08 | spout       | 1.00          | 40            |
| 2  | 90 20 80 036 00-08 | handle      | 2.00          | 40            |
| 8  | 04 21 50 010 00 90 | accessories | 1.00          | 2             |
| 6  | 04 28 20 067 00 90 | pipe        | 1.00          | 2             |
| 7  | 04 30 04 103 00 90 | hose        | 2.00          | 2             |
| 4  | 90 90 03 131 00 90 | top         | 2.00          | 2             |
| 10   | 90 24 03 253 01 90 | adaptor     | 1.00          | 2             |
| 5  | 04 30 11 040 00 90 | fixing set  | 2.00          | 2             |
| 3  | 90 12 12 232 00 90 | fixing cap  | 2.00          | 2             |
| 9  | 04 30 02 120 00-08 | hose        | 1.00          | -             |
| Spare part can no longer be ordered, please order the replacement item |                    |             |               |               |
| 12   | 90 18 40 317 00-08 | shower      | 1.00          | 40            |
| 11   | 90 14 10 043 00 90 | seal        | 3.00          | 2             |