

MADISON Three-hole basin mixer with pop-up waste - Brushed Dark Platinum






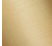
MADISON

20 700 360 Product version from 7/31/2009



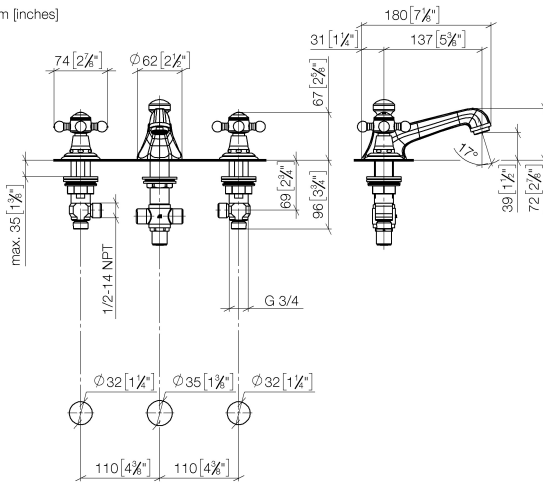
- 135mm projection
- 1 1/4" pop-up waste
- fixed spout
- circular, air-enriched flow
- height of mixer 72 mm
- height up to aerator 40 mm
- hole diameter valve 32 mm
- hole diameter spout 35 mm
- without rosette
- 2x 1/2" x 1/2" high pressure hose
- max. flow 4.5 l/min
- lead-free
- This product can help a building meet the requirements of Green Building Rating Systems, e.g. LEED®, BREEAM®, DGNB

Only suitable for basins with an overflow.

| | | |
|---|-------------------------------|--------------------|
|  | Brushed Dark Platinum | 20 700 360-99 0010 |
|  | Chrome | 20 700 360-00 0010 |
|  | Brushed Platinum | 20 700 360-06 0010 |
|  | Platinum | 20 700 360-08 0010 |
|  | Durabrass (23kt Gold) | 20 700 360-09 0010 |
|  | Brushed Durabrass (23kt Gold) | 20 700 360-28 0010 |

20 700 360 Product version from 7/31/2009

mm [inches]



Codes & Standards

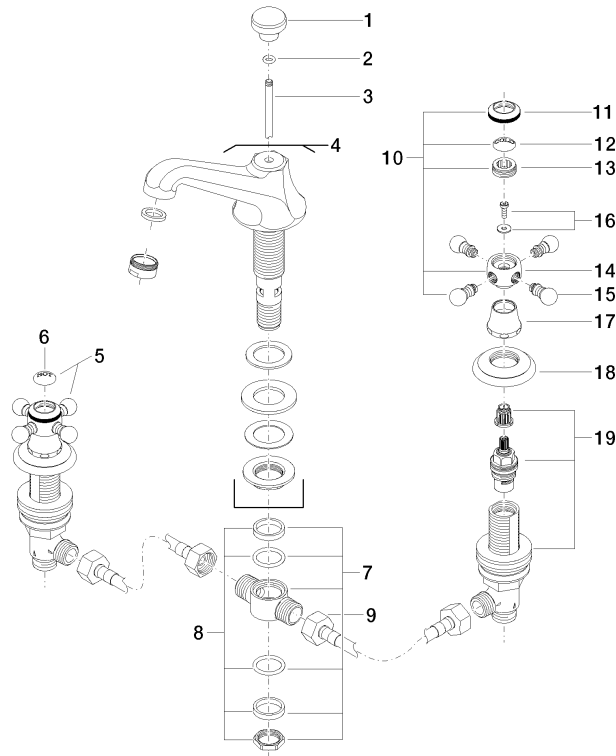
| | | | |
|--------|----------------|------------------------------------|------|
| ADA | ASME A112.18.1 | California Energy Commission (CEC) | cUPC |
| NSF372 | NSF61 | | |

Certificates and sustainability

| | | |
|-----------|------------|---------|
| IAPMO_N-4 | IAPMO_4976 | IAPMO_6 |
|-----------|------------|---------|

20 700 360 Product version from 7/31/2009

Parts for other
finishes can be found
here: [Chrome](#)



20 ————— Ablaufgarnitur 04.11.01.001.00.FP

Spare parts list

| No. | Item Number | Name | Quantity used | Delivery time |
|-----|--------------------|-----------------|---------------|---------------|
| 8 | 90 23 10 012 00 90 | gasket kit | 1.00 | 2 |
| 12 | 09 26 01 010 90 | accessories | 1.00 | 2 |
| 17 | 09 21 02 055-99 | cover | 2.00 | 20 |
| 18 | 09 27 35 001-99 | rosette | 2.00 | 20 |
| 1 | 09 20 36 030-99 | handle | 1.00 | 20 |
| 10 | 04 20 36 002 06-99 | handle (cold) | 1.00 | 20 |
| 11 | 09 20 36 005-99 | handle | 2.00 | 20 |
| 9 | 04 30 04 096 00 90 | hose | 2.00 | 2 |
| 4 | 13 700 380-99 0010 | spout | 1.00 | 20 |
| 19 | 90 17 11 040 51 90 | side panel | 2.00 | 2 |
| 16 | 04 30 30 029 00 90 | fixing set | 2.00 | 2 |
| 14 | 09 20 36 002-99 | handle | 2.00 | 20 |
| 5 | 04 20 36 002 07-99 | handle (hot) | 1.00 | 20 |
| 15 | 09 20 36 004-99 | handle | 8.00 | 20 |
| 3 | 09 31 09 004-99 | pull-rod | 1.00 | 20 |
| 13 | 09 20 83 006 90 | handle | 2.00 | 2 |
| 6 | 09 26 01 011 90 | accessories | 1.00 | 2 |
| 7 | 90 17 11 020 10 90 | distributor | 1.00 | 2 |
| 20 | 90 11 01 023 00-99 | pop-up waste | 1.00 | 20 |
| 2 | 90 14 10 062 00 90 | seal | 1.00 | 2 |