

## CYO Three-hole basin mixer with pop-up waste - Brushed Platinum






CYO

20 710 821

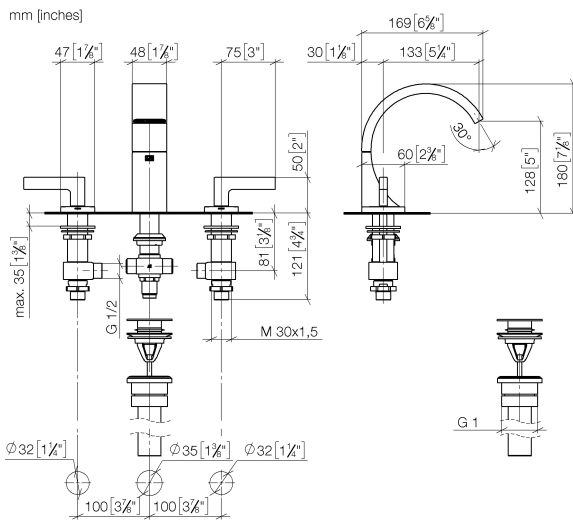


- 133mm projection
- 1 1/4" pop-up waste
- fixed spout
- rectangular, air-enriched flow
- height of mixer 180 mm
- height up to aerator 128 mm
- hole diameter spout 35 mm
- hole diameter valve 32 mm
- rosette for deck valve 60 x 60mm
- max. flow 4.5 l/min
- lead-free
- with hot / cold marking
- This product can help a building meet the requirements of Green Building Rating Systems, e.g. LEED®, BREEAM®, DGNB

Only suitable for basins with an overflow.

	Brushed Platinum	20 710 821-06 0010
	Chrome	20 710 821-00 0010
	Dark Chrome	20 710 821-19 0010
	Brushed Durabrass (23kt Gold)	20 710 821-28 0010
	Brushed Dark Platinum	20 710 821-99 0010

20 710 821



#### Codes & Standards

ADA	ASME A112.18.1	California Energy Commission (CEC)	cUPC
EPA WaterSense	NSF372	NSF61	WaterSense

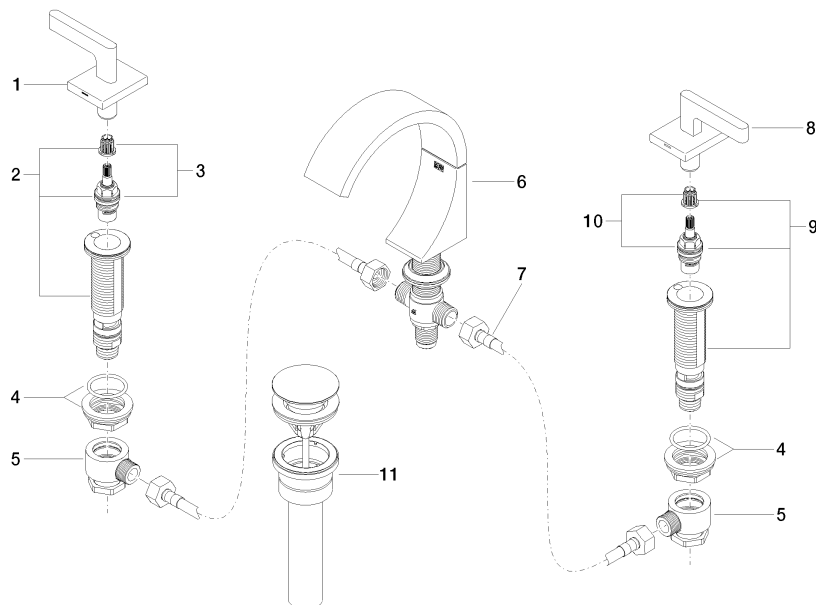


#### Certificates and sustainability

IAPMO_N-4	IAPMO_8834	IAPMO_4976	IAPMO_6
-----------	------------	------------	---------

20 710 821

Parts for other  
finishes can be found  
here: [Chrome](#)



## Spare parts list

No.	Item Number	Name	Quantity used	Delivery time
9	04 17 11 058 52 90	side panel	1.00	2
4	04 23 10 032 78 90	fixing set	2.00	2
1	90 20 70 057 02-06	handle ( hot )	1.00	10
3	90 90 03 153 00 90	top	1.00	2
10	90 90 03 152 00 90	top	1.00	2
2	04 17 11 058 53 90	side panel	1.00	2
8	90 20 70 057 03-06	handle ( cold )	1.00	10
11	10 125 970-06 0010	Basin Waste 1 1/4" - Brushed Platinum	1.00	2
5	04 17 11 023 10 90	distributor	2.00	2
7	04 30 04 096 00 90	hose	2.00	2
6	13 715 811-06	CYO Deck-mounted basin spout without pop-up waste - Brushed Platinum	1.00	10