

META Single-lever basin mixer with stand pipe without pop-up waste - Brushed Bronze

META

22 584 660 Product version from 5/1/2022



- 196mm projection
- fixed spout
- circular, air-enriched flow
- total height 1033 - 1103 mm
- height up to aerator 951 – 1021 mm
- rosette Ø 135 mm
- max. flow 4.5 l/min
- lead-free
- This product can help a building meet the requirements of Green Building Rating Systems, e.g. LEED®, BREEAM®, DGNB

	Brushed Bronze	22 584 660-42 0010
	Chrome	22 584 660-00 0010
	Brushed Platinum	22 584 660-06 0010
	Light Gold	22 584 660-26 0010
	Brushed Light Gold	22 584 660-27 0010
	Matte Black	22 584 660-33 0010
	Brushed Champagne (22kt Gold)	22 584 660-46 0010
	Champagne (22kt Gold)	22 584 660-47 0010
	Brushed Chrome	22 584 660-93 0010
	Brushed Dark Platinum	22 584 660-99 0010

Required miscellaneous



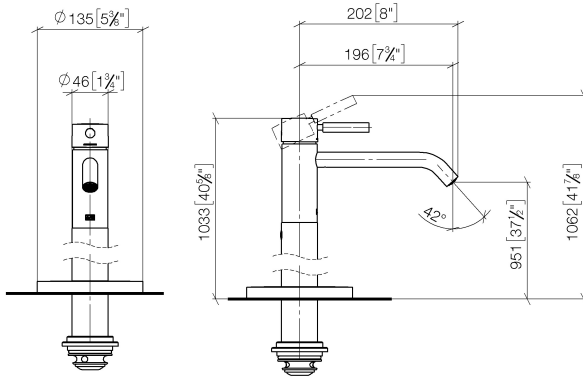
- Concealed floor mounting -**
- min. recess depth 80 mm
 - max. recess depth 150 mm

35 949 970-90
0010

META Single-lever basin mixer with stand pipe without pop-up waste - Brushed Bronze

META

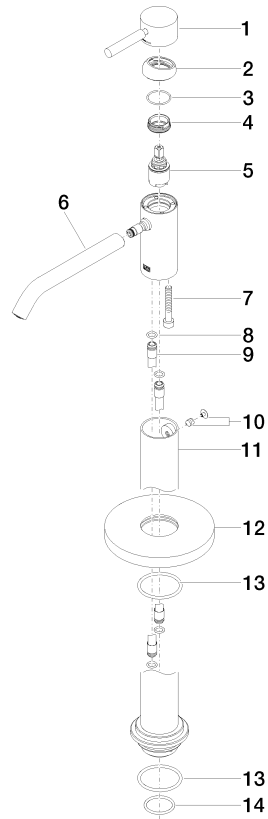
22 584 660 Product version from 5/1/2022
mm [inches]



Codes & Standards

ADA

California Energy
Commission
(CEC)



Spare parts list

No.	Item Number	Name	Quantity used	Delivery time
	10 04 31 11 002 00 90	pin	1.00	2
	13 09 14 10 084 90	seal	2.00	2
	7 09 30 30 111 90	screw	1.00	2
	2 09 28 30 041-42	cover	1.00	60
	14 09 14 10 018 90	seal	1.00	2
	5 90 15 05 044 00 90	cartridge	1.00	2
	4 09 24 04 266 90	nut	1.00	2
	6 90 11 06 216 01-42	spout	1.00	30
	8 09 14 10 139 90	seal	2.00	2
	11 90 28 22 574 00-42	pipe	1.00	30
	3 09 14 10 091 90	seal	1.00	2
	9 04 28 22 022 10 90	connection	2.00	2
	1 90 20 66 002 00-42	handle	1.00	30
	12 09 27 88 005-42	rosette	1.00	30