

META Single-lever basin mixer with stand pipe without pop-up waste -  
Champagne (22kt Gold)

## META

22 584 660 Product version from 5/1/2022



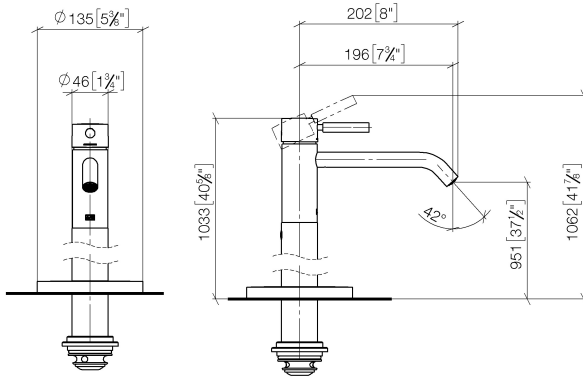
- 196mm projection
- fixed spout
- circular, air-enriched flow
- total height 1033 - 1103 mm
- height up to aerator 951 – 1021 mm
- rosette Ø 135 mm
- max. flow 4.5 l/min
- lead-free
- This product can help a building meet the requirements of Green Building Rating Systems, e.g. LEED®, BREEAM®, DGNB

|   |                               |                    |
|---|-------------------------------|--------------------|
|  | Champagne (22kt Gold)         | 22 584 660-47 0010 |
|  | Chrome                        | 22 584 660-00 0010 |
|  | Brushed Platinum              | 22 584 660-06 0010 |
|  | Light Gold                    | 22 584 660-26 0010 |
|  | Brushed Light Gold            | 22 584 660-27 0010 |
|  | Matte Black                   | 22 584 660-33 0010 |
|  | Brushed Bronze                | 22 584 660-42 0010 |
|  | Brushed Champagne (22kt Gold) | 22 584 660-46 0010 |
|  | Brushed Chrome                | 22 584 660-93 0010 |
|  | Brushed Dark Platinum         | 22 584 660-99 0010 |

## META Single-lever basin mixer with stand pipe without pop-up waste - Champagne (22kt Gold)

META

22 584 660 Product version from 5/1/2022  
mm [inches]



### Codes & Standards

ADA

California Energy  
Commission  
(CEC)

EPA WaterSense

WaterSense



### Certificates and sustainability

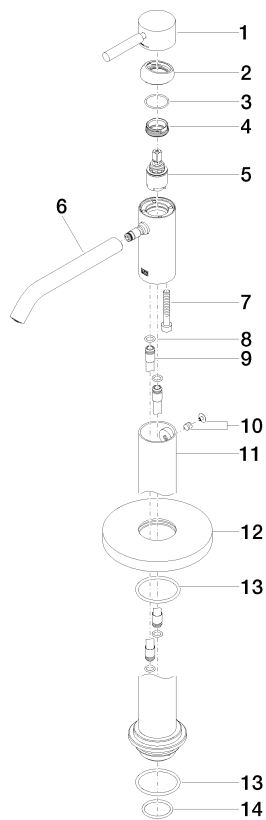
IAPMO\_8834

## META Single-lever basin mixer with stand pipe without pop-up waste - Champagne (22kt Gold)

META

22 584 660 Product version from 5/1/2022

Parts for other  
finishes can be found  
here: [Chrome](#)



### Spare parts list

| No. | Item Number        | Name       | Quantity used | Delivery time |
|-----|--------------------|------------|---------------|---------------|
| 5   | 90 15 05 044 00 90 | cartridge  | 1.00          | 2             |
| 2   | 09 28 30 041-47    | cover      | 1.00          | 60            |
| 10  | 04 31 11 002 00 90 | pin        | 1.00          | 2             |
| 4   | 09 24 04 266 90    | nut        | 1.00          | 2             |
| 7   | 09 30 30 111 90    | screw      | 1.00          | 2             |
| 3   | 09 14 10 091 90    | seal       | 1.00          | 2             |
| 13  | 09 14 10 084 90    | seal       | 2.00          | 2             |
| 14  | 09 14 10 018 90    | seal       | 1.00          | 2             |
| 6   | 90 11 06 216 01-47 | spout      | 1.00          | 30            |
| 12  | 09 27 88 005-47    | rosette    | 1.00          | 30            |
| 8   | 09 14 10 139 90    | seal       | 2.00          | 2             |
| 9   | 04 28 22 022 10 90 | connection | 2.00          | 2             |
| 1   | 90 20 66 002 00-47 | handle     | 1.00          | 30            |
| 11  | 90 28 22 574 00-47 | pipe       | 1.00          | 30            |