

TARA Single-hole mixer - Brushed Bronze

TARA

22 815 892 Product version from 5/27/2021



- 235mm projection
- pivotable spout 360°
- air-enriched flow
- height of mixer 378 mm
- height up to aerator 220 mm
- hole diameter 35 mm
- 2 x pressure hose with 3/8" cap nut
- max. flow 5.7 l/min at 3 bar flow pressure
- lead-free
- This product can help a building meet the requirements of Green Building Rating Systems, e.g. LEED®, BREEAM®, DGNB

Not possible in combination with rinsing spray.

	Brushed Bronze	22 815 892-42 0010
	Chrome	22 815 892-00 0010
	Brushed Platinum	22 815 892-06 0010
	Platinum	22 815 892-08 0010
	Durabrass (23kt Gold)	22 815 892-09 0010
	Dark Chrome	22 815 892-19 0010
	Brushed Durabrass (23kt Gold)	22 815 892-28 0010
	Matte Black	22 815 892-33 0010
	Brushed Champagne (22kt Gold)	22 815 892-46 0010
	Champagne (22kt Gold)	22 815 892-47 0010
	Brushed Chrome	22 815 892-93 0010
	Brushed Dark Platinum	22 815 892-99 0010

Recommended miscellaneous

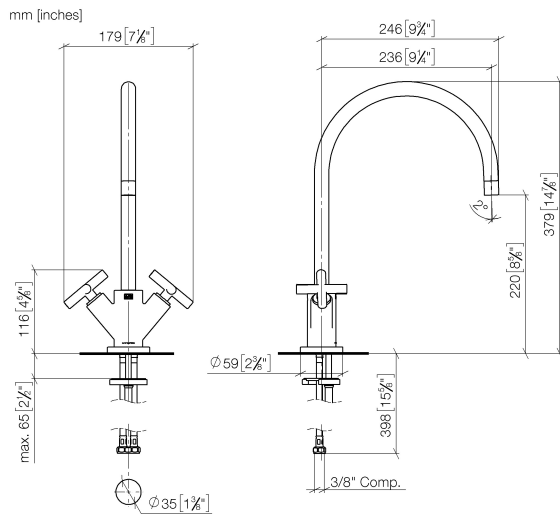
**AIR SWITCH Control button -
Brushed Bronze** 10 713 970-42



TARA Single-hole mixer - Brushed Bronze

TARA

22 815 892 Product version from 5/27/2021



Codes & Standards

ADA	ASME A112.18.1	California Energy Commission (CEC)	cUPC
NSF372	NSF61		

Certificates and sustainability

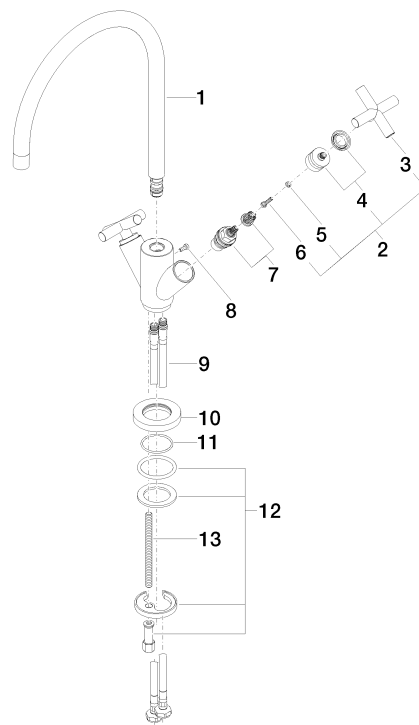
IAPMO_4976	IAPMO_N-4	IAPMO_6
------------	-----------	---------

TARA Single-hole mixer - Brushed Bronze

TARA

22 815 892 Product version from 5/27/2021

Parts for other
finishes can be found
here: [Chrome](#)



Spare parts list

No.	Item Number	Name	Quantity used	Delivery time
1	90 28 22 226 02-42	spout	1.00	30
2	90 20 89 010 10-42	handle	2.00	30
4	90 12 12 007 00-42	base	2.00	30
13	09 31 11 012 90	pin	1.00	2
7	90 90 03 151 00 90	top	2.00	2
8	09 30 30 054 90	screw	1.00	2
6	90 30 30 075 00 90	screw	2.00	2
10	09 28 10 132-42	ring	1.00	60
9	04 30 04 106 00 90	hose	2.00	2
5	90 30 11 029 00 90	disc	2.00	2
3	09 20 89 010-42	handle	2.00	30
11	09 14 10 134 90	seal	1.00	2
12	04 30 11 038 00 90	fixing set	1.00	2