

Shower system without hand shower - Brushed Light Gold

SERIES SPECIFIC

26 024 661 Product version from 10/1/2023



- pivotable 180°
- overhead shower: rain flow
- rain shower with anti-scale system
- max. rainshower flow 6.8 l/min
- Function from: 6.5 l/min
- rain shower Ø 300 mm
- shower holder with rosette Ø 78mm
- metal shower hose 1250mm with integrated anti-twist protection
- height of fittings up to top edge of elbow 2280mm
- height of fittings up to rain shower (bottom edge) 1940mm
- automatic diverter for fixed-riser shower/hand shower
- slide-on rosettes Ø 55 mm
- Pipe diameter 20 mm
- quick clearing
- This product reduces water consumption by 28% (compared to requirements of EPAct '92)
- This product can contribute to Water Use Reduction in LEED® Green Building Rating
- This product can help a building meet the requirements of Green Building Rating Systems, e.g. LEED®, BREEAM®, DGNB

Recommended spacing from bottom edge of shower stem to floor 92 mm.

Note: Local building codes may require the use of an anti-scald device. Please refer to remote pressure balance valve (35 910 970 90)

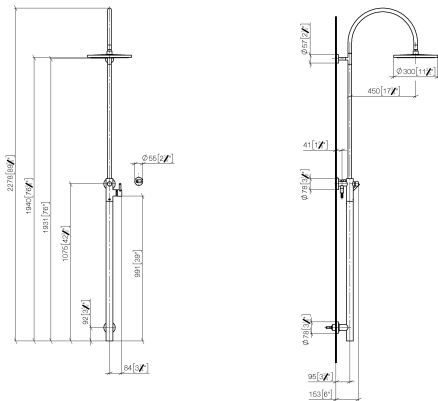
Intrinsic protection against back flow.

NOTE: Hand shower sold separately. Please see hand shower options under the miscellaneous articles section of each series.

Water carrying concealed rough parts on lower wall fixing.

	Brushed Light Gold	26 024 661-27 0010
	Chrome	26 024 661-00 0010
	Brushed Platinum	26 024 661-06 0010
	Platinum	26 024 661-08 0010
	Dark Chrome	26 024 661-19 0010
	Light Gold	26 024 661-26 0010
	Brushed Durabronze (23kt Gold)	26 024 661-28 0010
	Matte Black	26 024 661-33 0010
	Brushed Bronze	26 024 661-42 0010
	Brushed Champagne (22kt Gold)	26 024 661-46 0010
	Champagne (22kt Gold)	26 024 661-47 0010
	Brushed Chrome	26 024 661-93 0010
	Brushed Dark Platinum	26 024 661-99 0010

mm [inch]

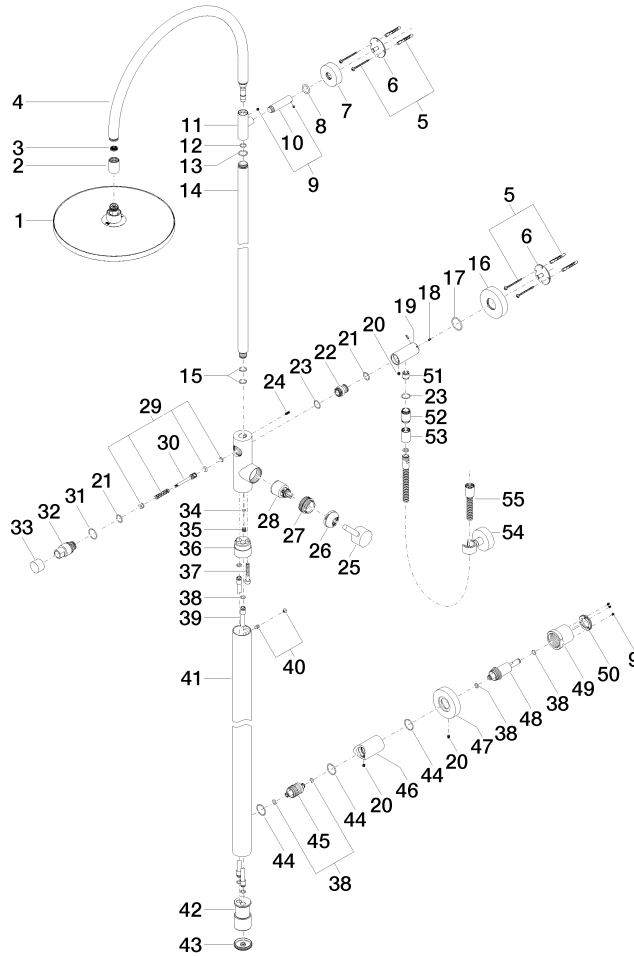


Shower system without hand shower - Brushed Light Gold

SERIES SPECIFIC

26 024 661 Product version from 10/1/2023

Parts for other
finishes can be found
here: [Chrome](#)



Spare parts list

No.	Item Number	Name	Quantity used	Delivery time
	32 09 21 34 081 20-27	nipple	1.00	60
	13 09 14 10 122 90	seal	1.00	2
	2 09 24 03 163 20-27	adaptor	1.00	60
	41 04 28 22 034 00-27	pipe	1.00	60
	23 90 14 10 032 00 90	seal	2.00	2
	29 90 16 02 023 00 90	spring	1.00	2
	10 09 11 10 083-27	connection	1.00	60
	1 04 12 05 091 10-27	shower	1.00	60
	55 90 30 02 072 00-27	Metal shower hose 1/2" x 3/8" x 1250 mm - Brushed Light Gold	1.00	30
	16 09 27 88 010-27	rosette	1.00	60
	19 09 11 10 081 20-27	connection	1.00	60
	50 09 24 77 002 90	nut	1.00	2
	7 09 27 89 000-27	rosette	1.00	60
	40 04 31 20 034 00 90	plug	1.00	2
	28 90 15 05 064 00 90	cartridge	1.00	2
	37 09 30 30 111 90	screw	1.00	2
	49 09 21 02 128 90	sleeve	1.00	2
	44 90 14 10 063 00 90	seal	3.00	2
	9 90 31 11 030 00 90	pin	1.00	2
	18 09 31 11 061 90	pin	2.00	2

Shower system without hand shower - Brushed Light Gold

SERIES SPECIFIC

26 024 661 Product version from 10/1/2023

5	05 30 31 025 00 90	fixing set	2.00	2
36	09 24 03 149 10-27	adaptor	1.00	-
Spare part can no longer be ordered, please order the replacement item				
35	09 31 20 027 10-00	plug	1.00	10
11	09 17 11 049-27	holder	1.00	60
31	09 14 10 112 90	seal	1.00	2
30	09 31 09 102 20-27	pull-rod	1.00	-
Spare part can no longer be ordered, please order the replacement item				
17	09 14 10 101 90	seal	1.00	2
46	09 11 10 080 20-27	connection	1.00	60
26	09 28 30 042-27	cover	1.00	60
39	04 28 22 038 00 90	connection	2.00	2
27	09 24 04 341 90	nut	1.00	60
33	09 20 88 002-27	handle	1.00	60
34	09 14 10 132 90	seal	1.00	2
4	90 28 22 082 00-27	spout	1.00	30
12	90 14 10 077 00 90	seal	1.00	2
51	90 23 01 141 00 90	back-flow preventer	1.00	2
21	90 14 10 010 00 90	seal	2.00	2
48	09 24 04 210 10 90	nipple	1.00	2
47	09 27 88 008-27	rosette	1.00	60
24	09 31 11 024 90	pin	1.00	2
8	09 14 10 006 90	seal	1.00	2
38	09 14 10 139 90	seal	6.00	2
22	09 24 03 162 20 90	nipple	1.00	2
53	90 21 02 069 00-27	cover	1.00	30
42	09 17 11 024 20 90	distributor	1.00	60
15	90 14 10 055 00 90	seal	2.00	2
52	09 24 03 115 20-27	nipple	1.00	60
14	04 28 22 134 20-27	pipe	1.00	60
43	09 21 02 132-27	lid	1.00	60
54	28 050 920-27	holder	1.00	-
Spare part can no longer be ordered, please order the replacement item				
25	90 20 66 017 00-27	handle	1.00	30
45	09 24 04 215 20 90	nipple	1.00	2
20	09 31 11 049 90	pin	3.00	2
3	09 23 01 039 90	sieve	1.00	2
6	09 30 11 103 90	holder	2.00	2