

TARA Shower set without hand shower - Matte Black

TARA

26 413 892 Product version from 4/1/2024



- slide bar
- Pipe diameter 18 mm
- rosettes Ø 55 mm
- gauge 800 mm
- metal shower hose 1750mm with integrated anti-twist protection
- shower hose connector 3/8"
- WRAS

This article does not include a hand shower!

NOTE: Hand shower sold separately. Please see hand shower options under the miscellaneous articles section of each series.

	Matte Black	26 413 892-33
	Chrome	26 413 892-00
	Brushed Platinum	26 413 892-06
	Platinum	26 413 892-08
	Dark Chrome	26 413 892-19
	Brushed Durabrass (23kt Gold)	26 413 892-28
	Brushed Dark Brass	26 413 892-39
	Brushed Bronze	26 413 892-42
	Brushed brass (PVD)	26 413 892-43
	Brushed Champagne (22kt Gold)	26 413 892-46
	Champagne (22kt Gold)	26 413 892-47
	Brushed Chrome	26 413 892-93
	Brushed Dark Platinum	26 413 892-99

Recommended miscellaneous

	Concealed adapter -	35 080 970-90 0010
--	----------------------------	--------------------

Required miscellaneous

	Hand shower FlowReduce - Matte Black	28 012 979-33 0010
--	---	--------------------

Required miscellaneous

	Hand shower FlowReduce - Matte Black	28 018 979-33 0010
--	---	--------------------

Required miscellaneous

	SERIES-VARIOUS Hand shower FlowReduce - Matte Black	28 027 979-33 0010
--	--	--------------------

Recommended miscellaneous

	Wall elbow - Matte Black	28 450 625-33
--	---------------------------------	---------------

Required miscellaneous

	Hand shower FlowReduce - Matte Black	28 016 979-33 0010
--	---	--------------------

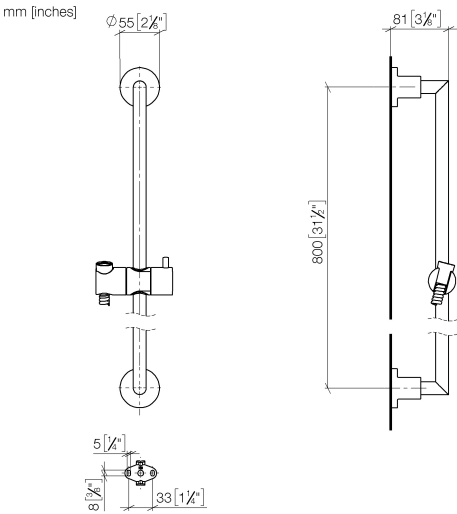
Required miscellaneous

	SERIES-VARIOUS Hand shower FlowReduce - Matte Black	28 025 979-33 0010
--	--	--------------------

Required miscellaneous

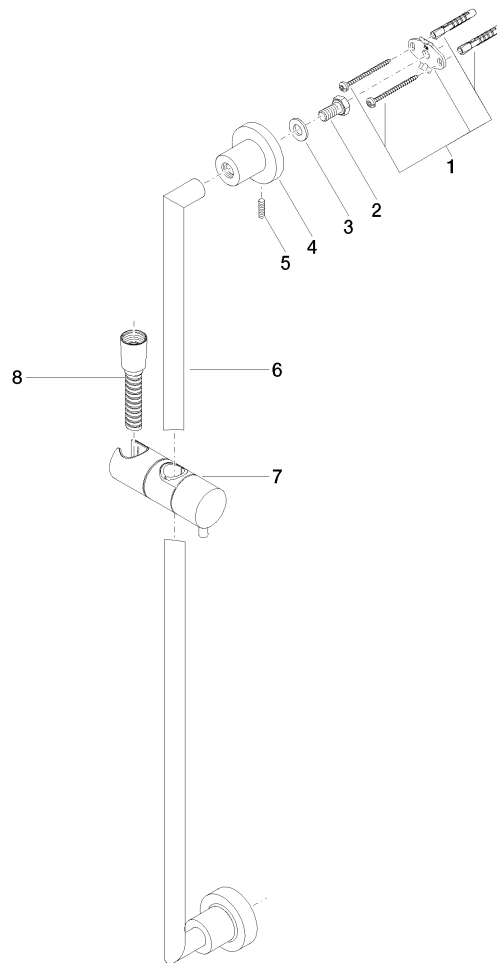
	SERIES-VARIOUS Hand shower FlowReduce - Matte Black	28 029 979-33 0010
--	--	--------------------

26 413 892 Product version from 4/1/2024



Codes & Standards			
ASME A112.18.1	cUPC	Scottish Water Byelaws	UK Water Supply Regulations
XP P 41-280			

Certificates and sustainability		
WRAS_2009	ACS_20 ACC LY	IAPMO_4976



Spare parts list

No.	Item Number	Name	Quantity used	Delivery time
6	05 28 22 590 00-33	bar	1.00	30
5	04 31 11 113 00 90	pin	2.00	2
8	28 322 970-33	Metal shower hose 1/2" x 3/8" x 1750 mm - Matte Black	1.00	2
7	12 580 970-33	Slide unit - Matte Black	1.00	50
3	09 30 11 046 90	disc	2.00	2
1	05 17 20 739 00 90	fixing set	2.00	2
4	08 17 89 505-33	holder	2.00	30
2	09 30 30 071 90	screw	2.00	2