



- spray flow
- automatic diverter for spout/Profi spray set
- height of mixer 665 mm
- individual rosette diameter 55mm
- profi spray hole diameter 30mm
- sprayface with anti-scaling system
- suspended spray with stainless steel spring (can be pivoted and locked)
- lead-free








Can only be combined with 32815682, 33826861, 32815861, 33836888, 32816888, 20816892, 33836875, 32815875.

Intrinsic protection against back flow.

Operating unit can be positioned freely.

Button has to be pressed while using.

The profi spray can be installed either with or without a rosette

	Chrome	27 799 970-00
	Brushed Platinum	27 799 970-06
	Platinum	27 799 970-08
	Dark Chrome	27 799 970-19
	Brushed Bronze	27 799 970-42
	Brushed Chrome	27 799 970-93
	Brushed Dark Platinum	27 799 970-99

27 799 970 Product version from 10/1/2024

mm [inches]  
1:10



Flow rate chart



## Codes & Standards

DIN 4109

EN 1717

ISO 3822

NSF372

NSF61

Ü-Zeichen



Profi spray set - Chrome

SERIES-VARIOUS

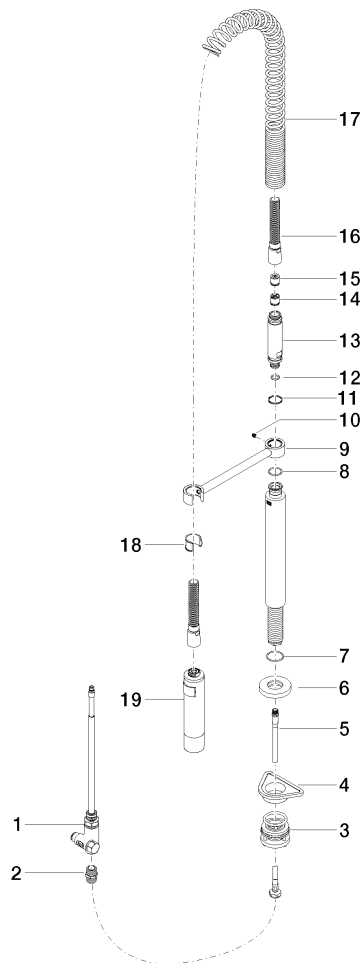
27 799 970    Product version from 10/1/2024

Certificates and sustainability

IAPMO\_6397            LGA\_38            Belgaqua\_24-005-2    IAPMO\_N-4976

27 799 970 Product version from 10/1/2024

Parts for other  
finishes can be found  
here: Brushed  
Platinum



## Spare parts list

No.	Item Number	Name	Quantity used	Delivery time
9	04 17 20 014 00-00	holder	1.00	10
7	09 14 10 120 90	seal	1.00	2
12	09 14 10 003 90	seal	1.00	2
2	90 24 03 250 00 90	nipple	1.00	2
13	09 30 01 067 10-00	adaptor	1.00	10
17	09 16 02 034 90	spring	1.00	2
1	90 17 09 046 12 90	diverter	1.00	2
6	90 27 86 000 00-00	rosette	1.00	10
3	04 23 10 004 03 90	fixing set	1.00	2
19	04 12 11 094 10-00	shower	1.00	10
15	09 23 01 046 90	back-flow preventer	1.00	2
4	09 18 40 090 90	sleeve	1.00	2
11	09 14 15 012 90	ring	1.00	2
10	09 31 11 049 90	pin	1.00	2
5	04 30 04 104 00 90	hose	1.00	2
8	09 14 10 031 90	seal	1.00	2
16	90 30 02 065 00-00	hose	1.00	10
18	90 18 40 035 00 90	sleeve	1.00	2
14	90 23 01 141 00 90	back-flow preventer	1.00	2