



- spray flow
- automatic diverter for spout/Profi spray set
- height of mixer 665 mm
- individual rosette diameter 55mm
- profi spray hole diameter 30mm
- sprayface with anti-scaling system
- suspended spray with stainless steel spring (can be pivoted and locked)
- lead-free





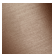


Can only be combined with 32815682, 33826861, 32815861, 33836888, 32816888, 20816892, 33836875, 32815875.

Intrinsic protection against back flow.

Operating unit can be positioned freely.

Button has to be pressed while using.

The profi spray can be installed either with or without a rosette

	Platinum	27 799 970-08
	Chrome	27 799 970-00
	Brushed Platinum	27 799 970-06
	Dark Chrome	27 799 970-19
	Brushed Bronze	27 799 970-42
	Brushed Chrome	27 799 970-93
	Brushed Dark Platinum	27 799 970-99

27 799 970 Product version from 10/1/2024

mm [inches]
1:10



Flow rate chart



Codes & Standards

DIN 4109

EN 1717

ISO 3822

NSF372

NSF61

Ü-Zeichen



Profi spray set - Platinum

SERIES-VARIOUS

27 799 970 Product version from 10/1/2024

Certificates and sustainability

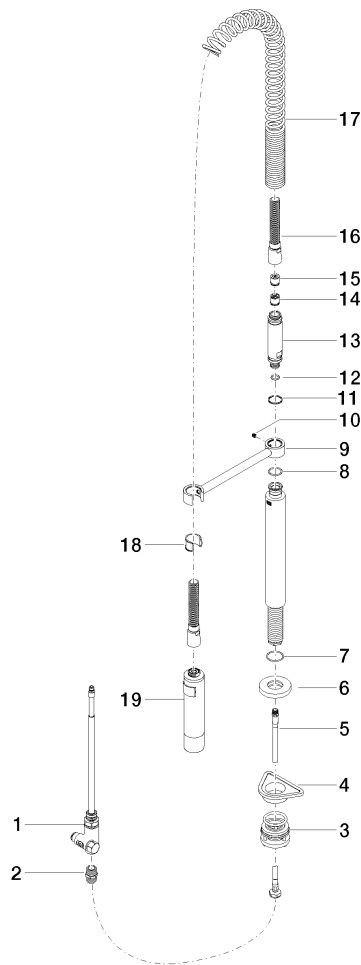
IAPMO_6397 LGA_38 Belgaqua_24-005-2 IAPMO_N-4976

Profi spray set - Platinum

SERIES-VARIOUS

27 799 970 Product version from 10/1/2024

Parts for other finishes can be found here: [Chrome](#)



Spare parts list

No.	Item Number	Name	Quantity used	Delivery time
	2 90 24 03 250 00 90	nipple	1.00	2
	9 04 17 20 014 00-08	holder	1.00	40
	5 04 30 04 104 00 90	hose	1.00	2
	8 09 14 10 031 90	seal	1.00	2
	7 09 14 10 120 90	seal	1.00	2
	12 09 14 10 003 90	seal	1.00	2
	6 90 27 86 000 00-08	rosette	1.00	-
Spare part can no longer be ordered, please order the replacement item				
	13 09 30 01 067 10-08	adaptor	1.00	40
	14 90 23 01 141 00 90	back-flow preventer	1.00	2
	3 04 23 10 004 03 90	fixing set	1.00	2
	18 90 18 40 035 00 90	sleeve	1.00	2
	4 09 18 40 090 90	sleeve	1.00	2
	10 09 31 11 049 90	pin	1.00	2
	11 09 14 15 012 90	ring	1.00	2
	15 09 23 01 046 90	back-flow preventer	1.00	2
	1 90 17 09 046 12 90	diverter	1.00	2
	19 04 12 11 094 10-08	shower	1.00	40
	16 90 30 02 065 00-08	hose	1.00	-
Spare part can no longer be ordered, please order the replacement item				
	17 09 16 02 034 90	spring	1.00	2