

WATER TUBE Kneipp wall elbow with hose holder with individual rosettes
FlowReduce - Chrome

SERIES SPECIFIC

27 841 979

Product version from 6/1/2024



- LAMINAR FLOW, max. flow rate l/min (at 3 bar)
 - with volume control
 - rosette 60 x 60 mm
 - holder for Kneipp hose
 - 1/2" wall elbow
 - without hose
 - This product can help a building meet the requirements of Green Building Rating Systems, e.g. LEED®, BREEAM®, DGNB
- Intrinsic protection against back flow.

	Chrome	27 841 979-00
	Brushed Platinum	27 841 979-06
	Platinum	27 841 979-08
	Dark Chrome	27 841 979-19
	Brushed Light Gold	27 841 979-27
	Brushed Durabrass (23kt Gold)	27 841 979-28
	Matte Black	27 841 979-33
	Brushed Champagne (22kt Gold)	27 841 979-46
	Champagne (22kt Gold)	27 841 979-47
	Brushed Chrome	27 841 979-93
	Brushed Dark Platinum	27 841 979-99

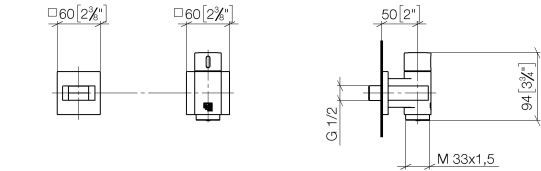
WATER TUBE Kneipp wall elbow with hose holder with individual rosettes
FlowReduce - Chrome

SERIES SPECIFIC

27 841 979

Product version from 6/1/2024

mm [inches]



Flow rate chart



Codes & Standards

EN 1717



WATER TUBE Kneipp wall elbow with hose holder with individual rosettes FlowReduce - Chrome

SERIES SPECIFIC

27 841 979 Product version from 6/1/2024

Certificates and sustainability

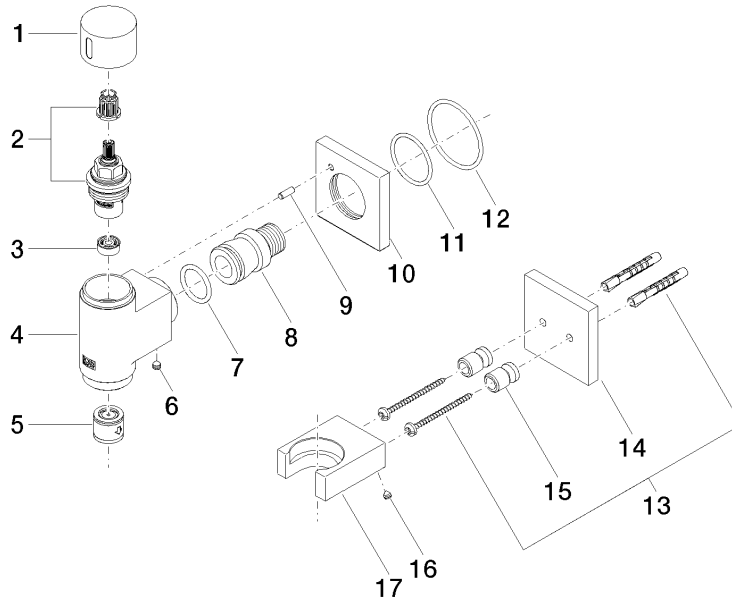
Belgaqua_24-007-2

WATER TUBE Kneipp wall elbow with hose holder with individual rosettes FlowReduce - Chrome

SERIES SPECIFIC

27 841 979 Product version from 6/1/2024

Parts for other
finishes can be found
here: Brushed
Platinum



Spare parts list

No.	Item Number	Name	Quantity used	Delivery time
14	09 27 97 022-00	rosette	1.00	10
7	09 14 10 081 90	seal	1.00	2
10	09 27 97 021-00	rosette	1.00	10
2	90 90 03 145 00 90	top	1.00	2
15	08 17 20 726 90	holder	1.00	2
6	90 31 11 112 00 90	pin	1.00	2
13	05 30 31 025 00 90	fixing set	1.00	2
17	09 17 20 023-00	holder	1.00	10
9	09 31 11 040 90	pin	1.00	2
3	90 23 01 145 00 90	flow reducer	1.00	2
11	09 14 10 119 90	seal	1.00	2
4	09 11 03 135-00	connection	1.00	10
16	09 31 11 148 90	pin	2.00	2
12	90 14 10 049 00 90	seal	1.00	2
8	09 24 03 151 90	nipple	1.00	2
1	09 20 97 021-00	handle	1.00	10
5	90 23 01 045 00 90	back-flow preventer	1.00	2