








28 450 845



- 3/8" shower outlet
  - rosette 60 x 78 mm
  - 1/2" connection
  - WRAS 2310091
- Intrinsic protection against back flow.**

Intrinsic protection against back flow.

	Chrome	28 450 845-00
	Brushed Platinum	28 450 845-06
	Dark Chrome	28 450 845-19
	Brushed Light Gold	28 450 845-27
	Matte Black	28 450 845-33
	Brushed Chrome	28 450 845-93
	Brushed Dark Platinum	28 450 845-99

Required miscellaneous

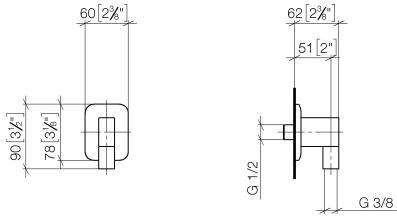
Concealed adapter -

35 080 970-90  
0010

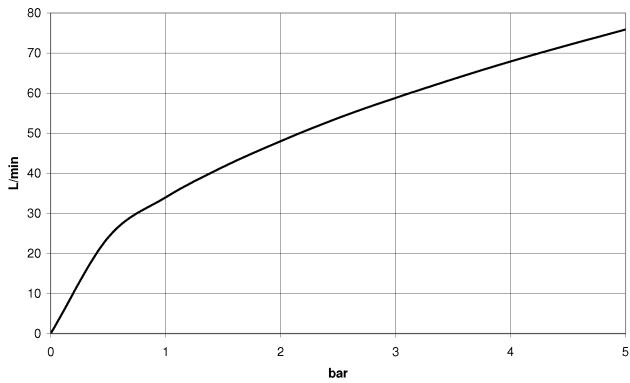


28 450 845

mm [inches]



**Flow rate chart**



**Codes & Standards**

ASME  
A112.18.1/CSA  
B125.1



## LISSÉ Wall elbow - Chrome

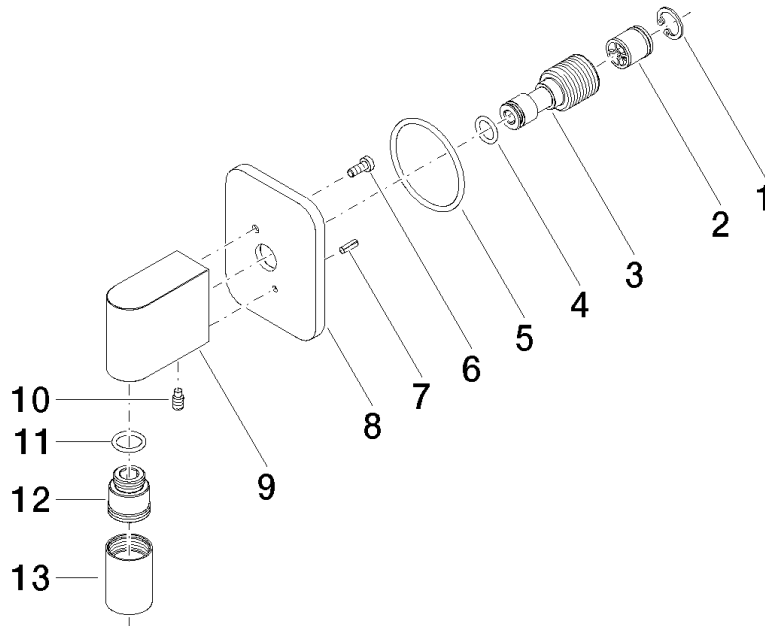
LISSÉ

28 450 845

### Certificates

IAPMO\_4976 (5).    WRAS\_2310091.

28 450 845



### Spare parts list

No.	Item Number	Name	Quantity used	Delivery time
1	09 16 01 014 90	ring	1	2
2	90 23 01 141 00 90	back-flow preventer	1	2
3	09 24 03 116 20 90	nipple	1	2
4	09 14 10 008 90	seal	1	2
5	09 14 10 142 90	seal	1	2
6	09 30 30 054 90	screw	1	2
7	09 31 11 026 90	pin	1	2
8	09 27 84 021-00	rosette	1	10
9	09 11 03 046-00	connection	1	10
10	09 31 11 005 90	pin	1	2
11	90 14 10 077 00 90	seal	1	2
12	09 24 03 107 20 90	nipple	1	2
13	90 21 02 069 00-00	cover	1	10