



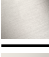



**MADISON Body spray without volume control FlowReduce - Brushed Dark
Platinum**

MADISON

28 518 360



- spray head Ø 55mm
- ball-joint pivotable through 25° (in any direction)
- rain flow
- rosette Ø 55 mm
- 1/2" connection
- max. flow 5 l/min
- This product can help a building meet the requirements of Green Building Rating Systems, e.g. LEED®, BREEAM®, DGNB

	Brushed Dark Platinum	28 518 360-99
	Chrome	28 518 360-00
	Brushed Platinum	28 518 360-06
	Platinum	28 518 360-08
	Durabress (23kt Gold)	28 518 360-09
	Brushed Durabress (23kt Gold)	28 518 360-28

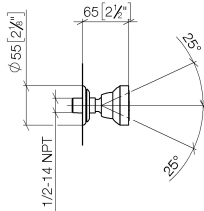
Required miscellaneous

Concealed adapter -

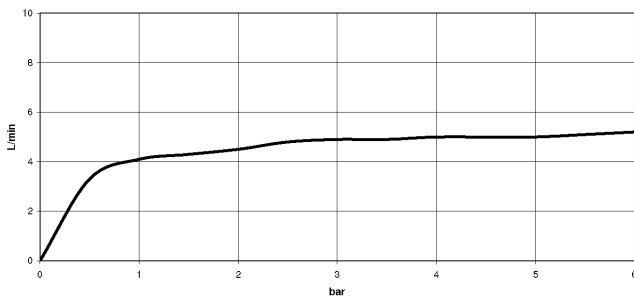
35 080 970-90
0010



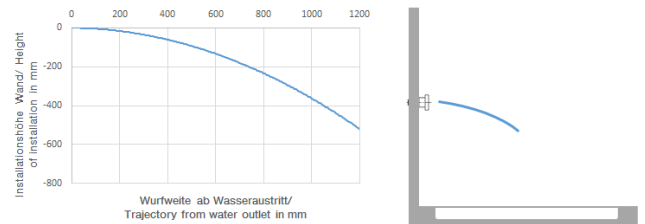
28 518 360
mm [inches]



Flow rate chart



Trajectory diagram



Codes & Standards

ASME
A112.18.1/CSA
B125.1

Scottish Water
Byelaws

California Energy
Commission
(CEC)

UK Water Supply
Regulations

DIN 4109

Ü-Zeichen

ISO 3822



MADISON Body spray without volume control FlowReduce - Brushed Dark
Platinum

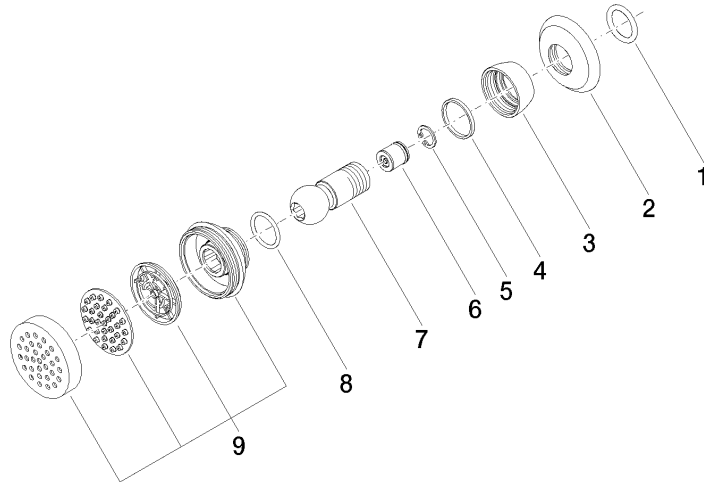
MADISON

28 518 360
Certificates

LGA_38

WRAS_240602

28 518 360





MADISON Body spray without volume control FlowReduce - Brushed Dark
Platinum

MADISON

28 518 360

Spare parts list

No.	Item Number	Name	Quantity used	Delivery time
	90 14 10 026 00 90	seal	9	2