

Body spray without volume control FlowReduce - Platinum

SERIES SPECIFIC

28 518 782 Product version from 3/10/2014



- spray head Ø 55mm
- ball-joint pivotable through 25° (in any direction)
- rain flow
- anti-scale system
- rosette 60 x 60 mm
- 1/2" connection
- max. flow 5 l/min
- WRAS
- This product can help a building meet the requirements of Green Building Rating Systems, e.g. LEED®, BREEAM®, DGNB

	Platinum	28 518 782-08
	Chrome	28 518 782-00
	Brushed Platinum	28 518 782-06
	Dark Chrome	28 518 782-19
	Brushed Light Gold	28 518 782-27
	Brushed Durabrass (23kt Gold)	28 518 782-28
	Matte Black	28 518 782-33
	Brushed Champagne (22kt Gold)	28 518 782-46
	Champagne (22kt Gold)	28 518 782-47
	Brushed Chrome	28 518 782-93
	Brushed Dark Platinum	28 518 782-99

Required miscellaneous

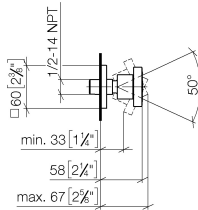
Concealed adapter -

35 080 970-90
0010

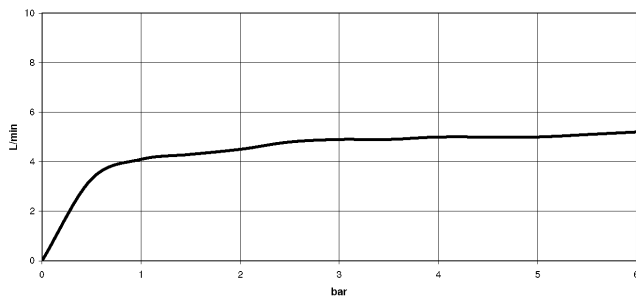


28 518 782 Product version from 3/10/2014

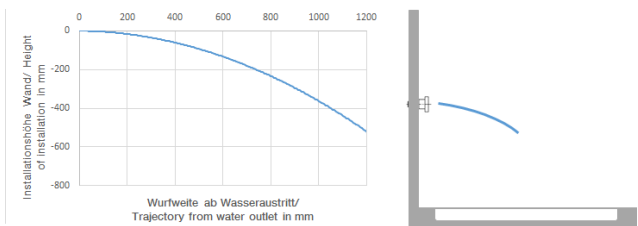
mm [inches]



Flow rate chart



Trajectory diagram



Codes & Standards

ASME A112.18.1	California Energy Commission (CEC)	cUPC	DIN 4109
ISO 3822	Scottish Water Byelaws	UK Water Supply Regulations	Ü-Zeichen



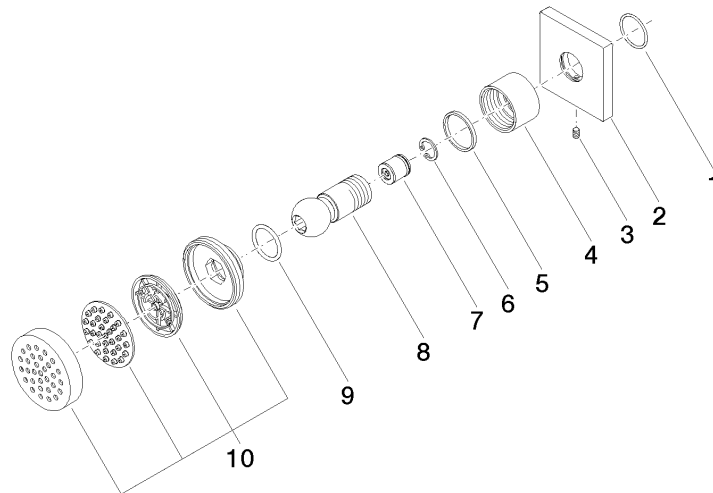
Body spray without volume control FlowReduce - Platinum

SERIES SPECIFIC

28 518 782 Product version from 3/10/2014

Certificates and sustainability

WRAS_1809	LGA_38	IAPMO_4976	WRAS_240602
-----------	--------	------------	-------------



Spare parts list

No.	Item Number	Name	Quantity used	Delivery time
7	09 23 01 048 90	back-flow preventer	1.00	2
6	09 16 01 014 90	ring	1.00	2
4	09 23 30 026-08	nut	1.00	40
2	09 27 98 003-08	rosette	1.00	40
3	09 31 11 048 90	pin	1.00	2
1	09 14 10 098 90	seal	1.00	2
10	90 12 05 027 00-08	casing (completely)	1.00	40
9	09 14 10 015 90	seal	1.00	2
5	09 14 15 010 90	ring	1.00	2
8	09 21 40 016-08	connection	1.00	40