

MADISON Rain shower with ceiling fixing 200 mm - Chrome

MADISON

28 565 977 Product version up to 12/5/2019



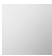





- rain shower Ø 200 mm
- PURE RAIN, max. flow rate 6.8 l/min (at 3 bar)
- with anti-scale system

Technical dimensions:

- distance between ceiling and lower edge of the shower 185mm
- rosette Ø 55 mm
- 1/2" connection

Notes:

- This product reduces water consumption by 28% (compared to requirements of EPAct '92)
- This product can help a building meet the requirements of Green Building Rating Systems, e.g. LEED®, BREEAM®, DGNB

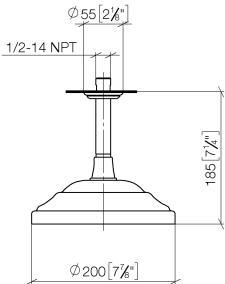
| | | |
|---|-------------------------------|--------------------|
|  | Chrome | 28 565 977-00 0010 |
|  | Brushed Platinum | 28 565 977-06 0010 |
|  | Platinum | 28 565 977-08 0010 |
|  | Durabrand (23kt Gold) | 28 565 977-09 0010 |
|  | Brushed Durabrand (23kt Gold) | 28 565 977-28 0010 |
|  | Brushed Dark Platinum | 28 565 977-99 0010 |

Required miscellaneous



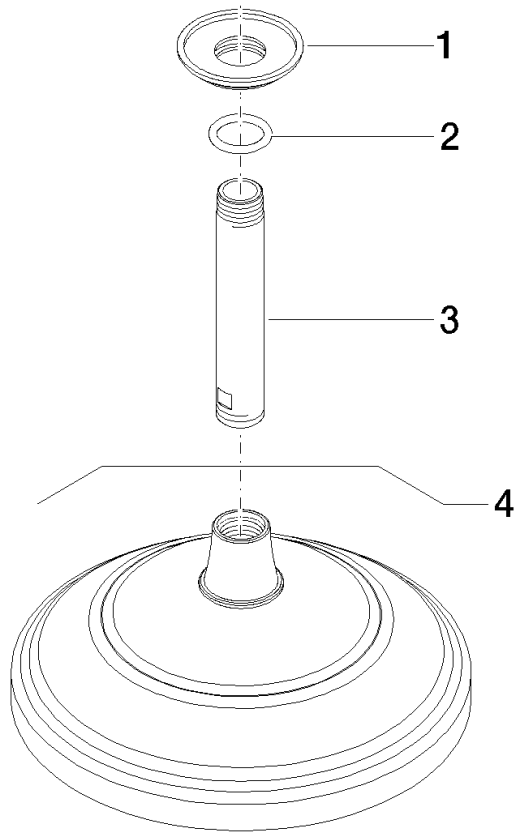
- Concealed wall elbow -** 35 085 970-90
 • max. recess depth 163 mm 0010
 • min. recess depth 90 mm

mm [inches]



| Codes & Standards | | | |
|-------------------|---|------|----------------|
| ASME A112.18.1 | California Energy Commission (CEC) | cUPC | EPA WaterSense |
| WaterSense |  | | |

| Certificates and sustainability | |
|---------------------------------|-------------|
| IAPMO_4976 | IAPMO_11777 |



Spare parts list

| No. | Item Number | Name | Quantity used | Delivery time |
|-----|--------------------|------------|---------------|---------------|
| 4 | 28 535 977-00 0010 | shower | 1.00 | 60 |
| 3 | 09 11 03 018-00 | connection | 1.00 | 10 |
| 1 | 09 27 35 003-00 | rosette | 1.00 | 10 |
| 2 | 90 14 10 026 00 90 | seal | 1.00 | 2 |