







MADISON Rain shower with ceiling fixing 200 mm - Brushed Platinum

MADISON

28 565 977 Product version up to 12/5/2019



- rain shower Ø 200 mm
- PURE RAIN, max. flow rate 6.8 l/min (at 3 bar)
- distance between ceiling and lower edge of the shower 185mm
- rosette Ø 55 mm
- 1/2" connection
- with anti-scale system
- This product reduces water consumption by 28% (compared to requirements of EPAct '92)
- This product can help a building meet the requirements of Green Building Rating Systems, e.g. LEED®, BREEAM®, DGNB

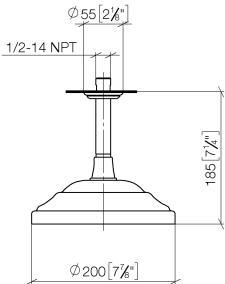
	Brushed Platinum	28 565 977-06 0010
	Chrome	28 565 977-00 0010
	Platinum	28 565 977-08 0010
	Durabrand (23kt Gold)	28 565 977-09 0010
	Brushed Durabrand (23kt Gold)	28 565 977-28 0010
	Brushed Dark Platinum	28 565 977-99 0010

Required miscellaneous



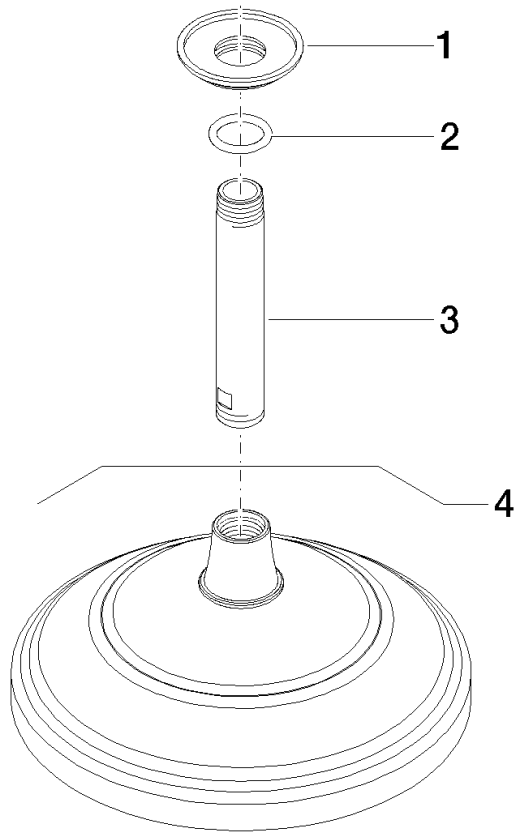
- | | |
|-------------------------------|---------------|
| Concealed wall elbow - | 35 085 970-90 |
| • max. recess depth 163 mm | 0010 |
| • min. recess depth 90 mm | |

mm [inches]



Codes & Standards			
ASME A112.18.1	California Energy Commission (CEC)	cUPC	EPA WaterSense
WaterSense			

Certificates and sustainability	
IAPMO_4976	IAPMO_11777



Spare parts list

No.	Item Number	Name	Quantity used	Delivery time
3	09 11 03 018-06	connection	1.00	10
1	09 27 35 003-06	rosette	1.00	10
4	28 535 977-06 0010	shower	1.00	-
Spare part can no longer be ordered, please order the replacement item				
2	90 14 10 026 00 90	seal	1.00	2