

SERIES SPECIFIC Rain shower with wall fixing 300 mm - Brushed Dark Platinum

SERIES SPECIFIC

28 675 970
Product version from 4/1/2025



- rain shower Ø 300 mm
- Material rain shower: plastic
- PURE RAIN, max. flow rate 6.8 l/min (at 3 bar)
- Function from: 6.5 l/min
- quick clearing
- with anti-scale system

Technical dimensions:

- 450mm projection
- rosette Ø 60 mm
- 1/2" connection

Notes:

- This product can help a building meet the requirements of Green Building Rating Systems, e.g. LEED®, BREEAM®, DGNB

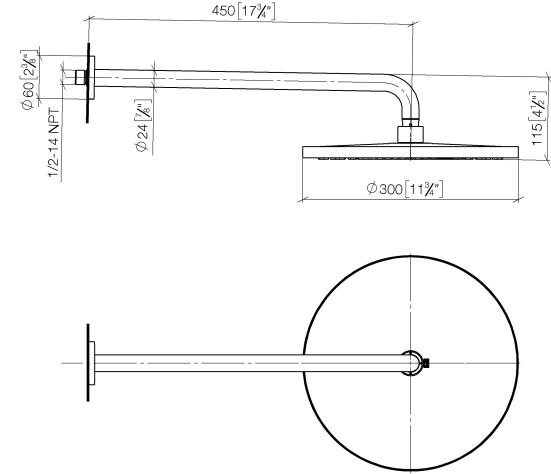
| | | |
|---|-----------------------|--------------------|
|  | Brushed Dark Platinum | 28 675 970-99 0010 |
|  | Chrome | 28 675 970-00 0010 |
|  | Dark Chrome | 28 675 970-19 0010 |
|  | Light Gold | 28 675 970-26 0010 |
|  | Brushed Light Gold | 28 675 970-27 0010 |
|  | Matte Black | 28 675 970-33 0010 |
|  | Brushed Bronze | 28 675 970-42 0010 |
|  | Brushed Chrome | 28 675 970-93 0010 |



SERIES SPECIFIC Rain shower with wall fixing 300 mm - Brushed Dark Platinum

SERIES SPECIFIC

28 675 970 Product version from 4/1/2025
mm [inches]

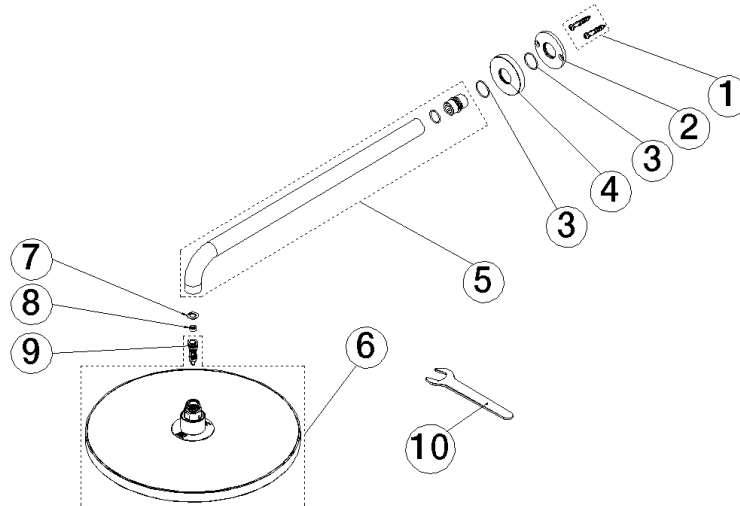


SERIES SPECIFIC Rain shower with wall fixing 300 mm - Brushed Dark Platinum

SERIES SPECIFIC

28 675 970 Product version from 4/1/2025

Parts for other
finishes can be found
here: [Chrome](#)



Spare parts list

| No. | Item Number | Name | Quantity used | Delivery time |
|--|-----------------------|--------------|---------------|---------------|
| | 9 04 18 40 276 00 90 | insert | 1.00 | 2 |
| | 1 04 30 31 032 00 90 | fixing set | 1.00 | 2 |
| | 2 09 17 20 120 90 | holder | 1.00 | 2 |
| | 3 09 14 10 150 90 | seal | 2.00 | 2 |
| | 4 09 27 97 015-99 | rosette | 1.00 | 20 |
| | 7 09 16 01 014 90 | ring | 1.00 | 2 |
| | 6 90 12 05 105 00-99 | shower | 1.00 | - |
| Spare part can no longer be ordered, please order the replacement item | | | | |
| | 5 90 11 03 070 00-99 | pipe | 1.00 | 20 |
| | 10 90 30 09 069 00 90 | key | 1.00 | 2 |
| | 8 09 23 01 102 90 | flow reducer | 1.00 | 2 |