
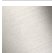


LULU Rain shower with ceiling fixing 300 x 240 mm - Chrome
LULU


28 796 710
Product version from 3/13/2017



- PURE RAIN, max. flow rate 6.8 l/min (at 3 bar)
- Function from: 6 l/min
- with anti-scale system
- rain shower 300 x 240mm
- distance between ceiling and lower edge of the shower 165mm
- rosette 78 x 55, as required
- 1/2" connection
- quick clearing
- This product reduces water consumption by 28% (compared to requirements of EPAct '92)
- This product can contribute to Water Use Reduction in LEED® Green Building Rating
- This product can help a building meet the requirements of Green Building Rating Systems, e.g. LEED®, BREEAM®, DGNB

	Chrome	28 796 710-00 0010
	Brushed Platinum	28 796 710-06 0010

Required miscellaneous

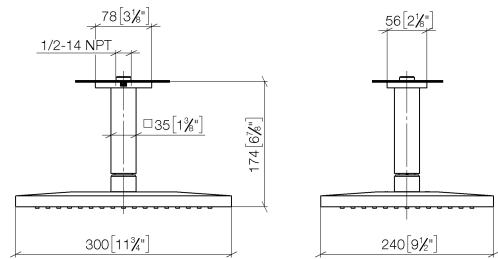
	<b>Concealed wall elbow -</b> •max. recess depth 163 mm •min. recess depth 90 mm	35 085 970-90 0010
---	--	-----------------------

LULU Rain shower with ceiling fixing 300 x 240 mm - Chrome


LULU

28 796 710    Product version from 3/13/2017

mm [inches]

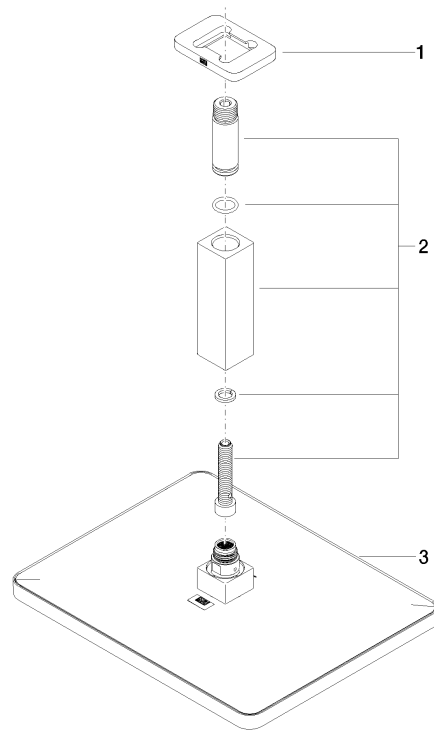


Codes & Standards

ASME A112.18.1	California Energy Commission (CEC)	cUPC	EPA WaterSense
WaterSense			

Certificates and sustainability

IAPMO_4976	IAPMO_11777
------------	-------------



### Spare parts list

No.	Item Number	Name	Quantity used	Delivery time
2	90 11 10 092 00-00	connection	1.00	10
3	04 12 05 062 10-00	shower	1.00	10
1	09 27 71 020-00	rosette	1.00	10