

## MEM Single-lever basin mixer - Chrome

MEM

29 210 782 Product version from 3/10/2014 to 3/18/2019



- hole diameter 35 mm
- rosette 60 x 60 mm
- 3x screw-in M 10 x 1 pressure hose, leak-tested
- 2 x pressure hose with 3/8" cap nut

Note: Local building codes may require the use of an anti-scald device. Please refer to remote pressure balance valve (35 910 970 90)

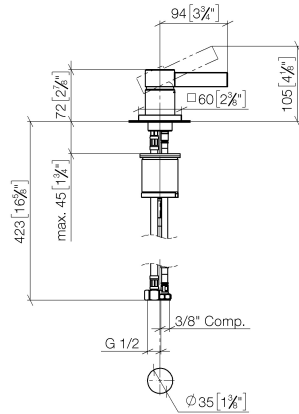
	Chrome	29 210 782-00 0010
	Brushed Platinum	29 210 782-06 0010
	Platinum	29 210 782-08 0010
	Dark Chrome	29 210 782-19 0010
	Brushed Durabrass (23kt Gold)	29 210 782-28 0010
	Brushed Champagne (22kt Gold)	29 210 782-46 0010
	Champagne (22kt Gold)	29 210 782-47 0010
	Brushed Dark Platinum	29 210 782-99 0010

## MEM Single-lever basin mixer - Chrome

MEM

29 210 782 Product version from 3/10/2014 to 3/18/2019

mm [inches]



### Codes & Standards

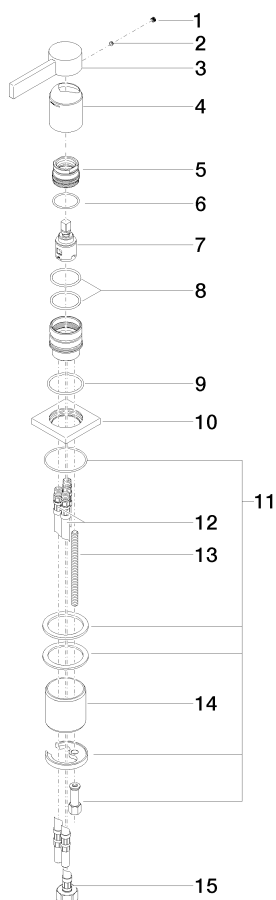
ADA

# MEM Single-lever basin mixer - Chrome

MEM

29 210 782 Product version from 3/10/2014 to 3/18/2019

Parts for other  
finishes can be found  
here: Brushed  
Platinum



## Spare parts list

No.	Item Number	Name	Quantity used	Delivery time
5	09 24 04 288 90	nut	1.00	2
7	90 15 05 042 00 90	cartridge	1.00	2
9	09 14 10 067 90	seal	1.00	2
12	04 30 04 045 00 90	hose	2.00	2
6	09 14 10 137 90	seal	1.00	2
8	09 14 10 192 90	seal	2.00	2
10	09 27 78 040-00	rosette	1.00	10
13	09 31 11 012 90	pin	1.00	2
15	04 30 04 019 00 90	hose	1.00	2
3	09 20 78 057-00	handle	1.00	10
11	04 30 11 038 02 90	fixing set	1.00	2
14	09 18 40 079 90	sleeve	1.00	2
4	09 11 02 289-00	cover	1.00	10
2	90 31 11 063 00 90	pin	1.00	2
1	90 31 20 109 00 90	plug	1.00	2