

CYO Two-hole basin mixer without pop-up waste - Durabrand / Brushed Durabrand (23kt Gold)



CYO

29 218 811



- 167mm projection
- fixed spout
- rectangular, air-enriched flow
- height of mixer 198 mm
- height up to aerator 133 mm
- hole diameter spout 35 mm
- hole diameter valve 32 mm
- handle Ø 60mm
- 2 x pressure hose with 3/8" cap nut
- 1x screw-in M 10 x 1 pressure hose, leak-tested
- max. flow 4.5 l/min
- progressive cartridge
- lead-free
- This product can help a building meet the requirements of Green Building Rating Systems, e.g. LEED®, BREEAM®, DGNB

NOTE: The handle inserts must be ordered separately from the fittings!

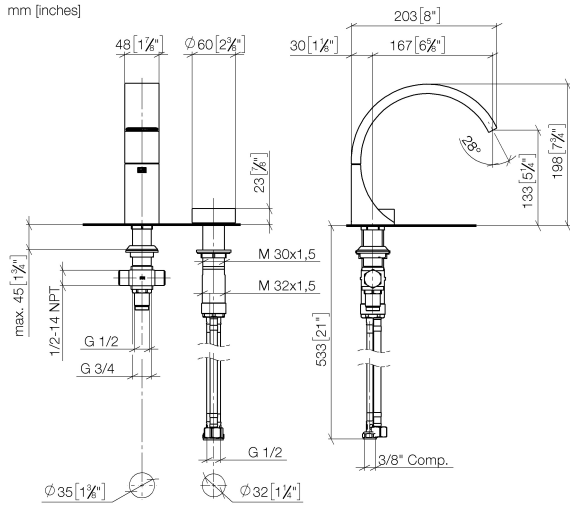
	Durabrand / Brushed Durabrand (23kt Gold)	29 218 811-38 0010
	Chrome	29 218 811-00 0010
	Brushed Platinum	29 218 811-06 0010
	Dark Chrome	29 218 811-19 0010
	Brushed Durabrand (23kt Gold)	29 218 811-28 0010
	Platinum / Brushed Platinum	29 218 811-36 0010
	Brushed Dark Platinum	29 218 811-99 0010



CYO Two-hole basin mixer without pop-up waste - Durabross / Brushed
Durabross (23kt Gold)

CYO

29 218 811
mm [inches]



Codes & Standards

California Energy Commission (CEC)	NSF372	NSF61
--	--------	-------

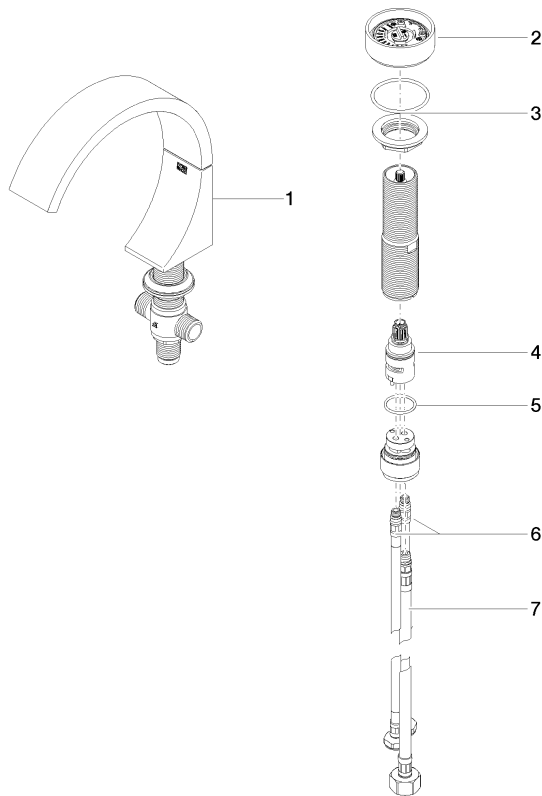
Certificates and sustainability

IAPMO_N-4	IAPMO_6
-----------	---------

CYO Two-hole basin mixer without pop-up waste - Durabronz / Brushed Durabronz (23kt Gold)

CYO

29 218 811
Parts for other
finishes can be found
here: Chrome



Spare parts list

No.	Item Number	Name	Quantity used	Delivery time
4	90 90 03 169 00 90	top	1.00	2
7	04 30 04 019 00 90	hose	1.00	2
6	04 30 04 102 00 90	High pressure hose 3/8" -	2.00	2
5	09 14 10 112 90	seal	1.00	2
2	90 18 40 290 00-38	handle	1.00	20
3	04 30 11 038 67 90	fixing set	1.00	2
1	13 717 811-38	CYO Deck-mounted basin spout without pop-up waste - Durabronz / Brushed Durabronz (23kt Gold)	1.00	20