

**VAIA Wall-mounted valve cold water without pop-up waste - Brushed  
Champagne (22kt Gold)**

VAIA

30 010 809



- 151mm projection
- fixed spout
- circular, air-enriched flow
- adapter with male thread 3/4"
- hole diameter 35 mm
- rosette Ø 60 mm
- max. flow 4.5 l/min
- lead-free
- This product can help a building meet the requirements of Green Building Rating Systems, e.g. LEED®, BREEAM®, DGNB

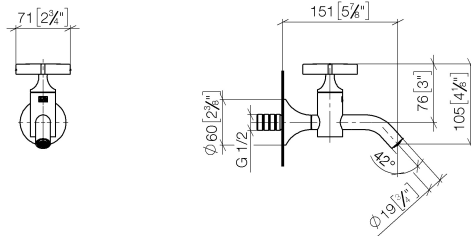
	Brushed Champagne (22kt Gold)	30 010 809-46 0010
	Chrome	30 010 809-00 0010
	Brushed Platinum	30 010 809-06 0010
	Platinum	30 010 809-08 0010
	Dark Chrome	30 010 809-19 0010
	Brushed Durabrass (23kt Gold)	30 010 809-28 0010
	Brushed Bronze	30 010 809-42 0010
	Champagne (22kt Gold)	30 010 809-47 0010
	Brushed Dark Platinum	30 010 809-99 0010



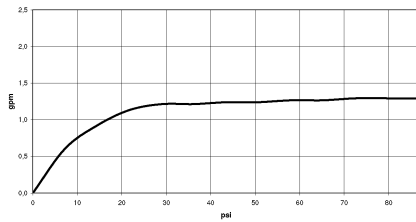
# VAIA Wall-mounted valve cold water without pop-up waste - Brushed Champagne (22kt Gold)

VAIA

30 010 809  
mm [inches]



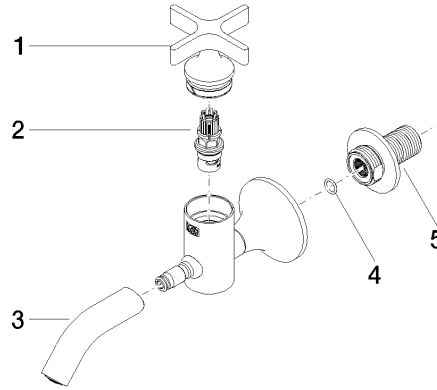
## Flow rate chart



## Codes & Standards

California Energy  
Commission  
(CEC)

30 010 809  
Parts for other  
finishes can be found  
here: [Chrome](#)



### Spare parts list

No.	Item Number	Name	Quantity used	Delivery time
1	90 20 66 025 00-46	handle	1	30
2	90 90 03 175 00 90	top	1	2
3	90 28 22 381 01-46	spout	1	30
4	90 14 10 060 00 90	seal	1	2
5	09 24 03 269 90	nipple	1	2