

META SQUARE Two-hole mixer with individual rosettes - Brushed Champagne (22kt Gold)

META SQUARE

32 815 861    Product version from 10/1/2024



- 235mm projection
  - pivotable spout 360°
  - Optional swivel limiter available with swivel limiter set 12 820 970 90
  - air-enriched flow
  - height of mixer 336 mm
  - height up to aerator 262 mm
  - individual rosette 60 x 60 mm
  - hole diameter spout 35 mm
  - single-lever mixer hole diameter 35 mm
  - 2 x pressure hose with 3/8" cap nut
  - max. flow 5.7 l/min at 3 bar flow pressure
  - lead-free
  - This product can help a building meet the requirements of Green Building Rating Systems, e.g. LEED®, BREEAM®, DGNB
- Operating unit can be positioned freely.

	Brushed Champagne (22kt Gold)	32 815 861-46 0010
	Chrome	32 815 861-00 0010
	Brushed Platinum	32 815 861-06 0010
	Platinum	32 815 861-08 0010
	Durabrass (23kt Gold)	32 815 861-09 0010
	Dark Chrome	32 815 861-19 0010
	Brushed Durabrass (23kt Gold)	32 815 861-28 0010
	Matte Black	32 815 861-33 0010
	Brushed Bronze	32 815 861-42 0010
	Champagne (22kt Gold)	32 815 861-47 0010
	Brushed Chrome	32 815 861-93 0010
	Brushed Dark Platinum	32 815 861-99 0010

Recommended miscellaneous

**Dispenser with rosette - Brushed Champagne (22kt Gold)**    82 444 970-46



Recommended miscellaneous

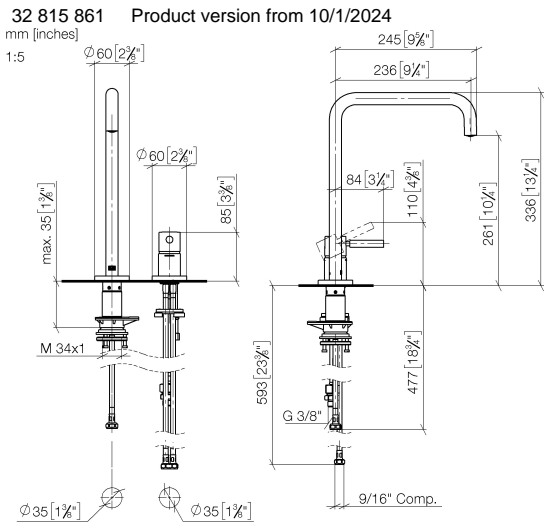
**AIR SWITCH Control button - Brushed Champagne (22kt Gold)**    10 713 970-46





META SQUARE Two-hole mixer with individual rosettes - Brushed Champagne (22kt Gold)

META SQUARE



Codes & Standards

ADA	ASME A112.18.1	California Energy Commission (CEC)	cUPC
NSF372	NSF61		

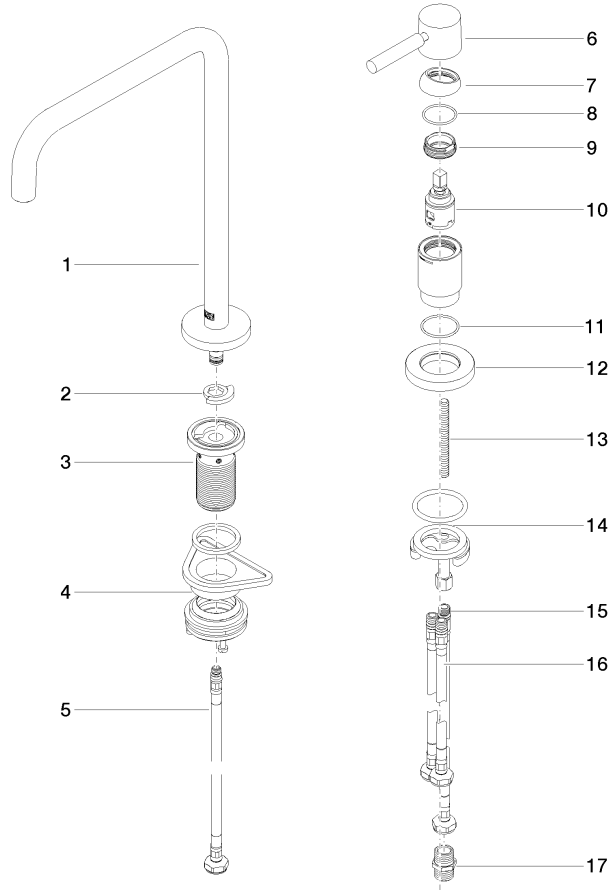
Certificates and sustainability

IAPMO_6397	IAPMO_N-4976	IAPMO_4976 (
------------	--------------	--------------

# META SQUARE Two-hole mixer with individual rosettes - Brushed Champagne (22kt Gold)

META SQUARE

32 815 861 Product version from 10/1/2024



## Spare parts list

No.	Item Number	Name	Quantity used	Delivery time
5	04 30 04 100 00 90	hose	1.00	2
6	90 20 66 003 00-46	handle	1.00	30
11	09 14 10 110 90	seal	1.00	2
2	12 820 970 90	Swivel limitation set -	1.00	2
10	90 15 05 042 00 90	cartridge	1.00	2
15	04 30 04 104 00 90	hose	1.00	2
12	09 27 97 040-46	rosette	1.00	60
7	09 28 30 026-46	cover	1.00	60
4	04 23 10 044 08 90	fixing set	1.00	2
14	04 30 11 085 97 90	fixing set	1.00	2
8	09 14 10 091 90	seal	1.00	2
16	04 30 04 107 00 90	hose	2.00	2
1	90 28 22 288 00-46	spout	1.00	30
13	09 31 11 011 90	pin	1.00	2
17	90 24 03 250 00 90	nipple	1.00	2
3	90 30 01 299 00 90	shaft	1.00	2
9	09 24 04 266 90	nut	1.00	2