

TARA ULTRA Two-hole mixer with individual rosettes - Dark Chrome

TARA ULTRA

32 815 875 Product version from 10/1/2024



- 241mm projection
- pivotable spout 360°
- Optional swivel limiter available with swivel limiter set 12 820 970 90
- air-enriched flow
- height of mixer 373 mm
- height up to aerator 224 mm
- individual rosette 60 x 60 mm
- hole diameter spout 35 mm
- single-lever mixer hole diameter 35 mm
- 2 x pressure hose with 3/8" cap nut
- max. flow 5.7 l/min at 3 bar flow pressure
- lead-free
- This product can help a building meet the requirements of Green Building Rating Systems, e.g. LEED®, BREEAM®, DGNB

Operating unit can be positioned freely.

	Dark Chrome	32 815 875-19 0010
	Chrome	32 815 875-00 0010
	Brushed Platinum	32 815 875-06 0010
	Platinum	32 815 875-08 0010
	Durabrass (23kt Gold)	32 815 875-09 0010
	Brushed Durabrass (23kt Gold)	32 815 875-28 0010
	Matte Black	32 815 875-33 0010
	Brushed Bronze	32 815 875-42 0010
	Brushed Champagne (22kt Gold)	32 815 875-46 0010
	Champagne (22kt Gold)	32 815 875-47 0010
	Brushed Chrome	32 815 875-93 0010
	Brushed Dark Platinum	32 815 875-99 0010

Recommended miscellaneous

Swivel limitation set -

12 820 970 90



Recommended miscellaneous

AIR SWITCH Control button - Dark Chrome



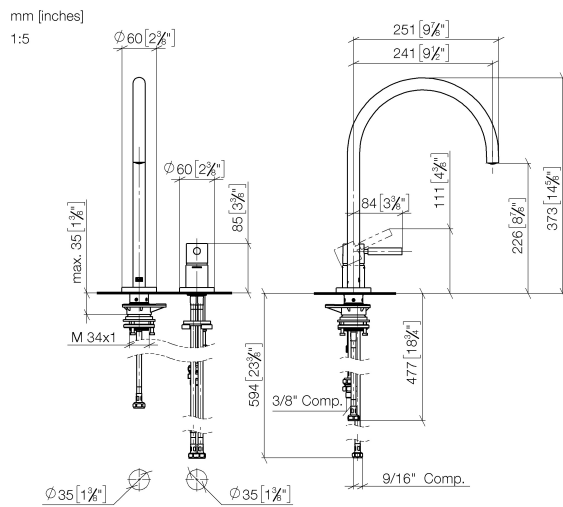
Recommended miscellaneous

Dispenser with rosette - Dark Chrome

82 444 970-19



32 815 875 Product version from 10/1/2024

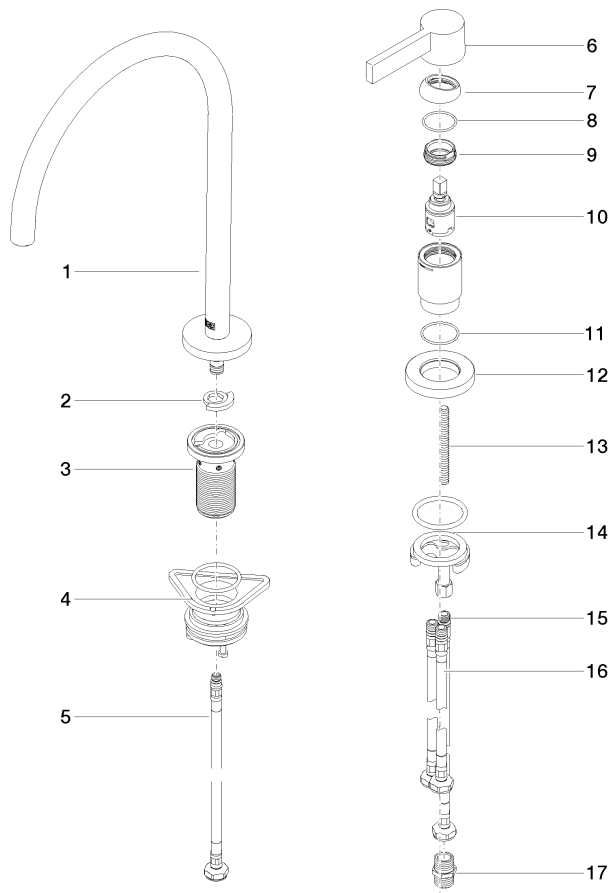


Codes & Standards

ADA	ASME A112.18.1	California Energy Commission (CEC)	cUPC
NSF372	NSF61		

Certificates and sustainability

IAPMO_6397 IAPMO_N-4976 IAPMO_4976 (



Spare parts list

No.	Item Number	Name	Quantity used	Delivery time
	7 09 28 30 026-19	cover	1.00	60
	1 90 28 22 291 00-19	spout	1.00	20
	11 09 14 10 110 90	seal	1.00	2
	15 04 30 04 104 00 90	hose	1.00	2
	10 90 15 05 042 00 90	cartridge	1.00	2
	14 04 30 11 085 97 90	fixing set	1.00	2
	16 04 30 04 105 00 90	hose	2.00	2
	17 90 24 03 250 00 90	nipple	1.00	2
	6 90 20 87 003 00-19	handle	1.00	20
	5 04 30 04 100 00 90	hose	1.00	2
	4 04 23 10 044 08 90	fixing set	1.00	2
	9 09 24 04 266 90	nut	1.00	2
	3 90 30 01 299 00 90	shaft	1.00	2
	12 09 27 97 040-19	rosette	1.00	60
	2 12 820 970 90	Swivel limitation set -	1.00	2
	8 09 14 10 091 90	seal	1.00	2
	13 09 31 11 011 90	pin	1.00	2