

IMO Single-lever bath mixer for wall mounting without shower set - Matte Black

IMO



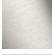



33 200 671 Product version from 4/1/2024



- 190mm projection
- circular normal flow
- automatic bath/shower diverter
- 3/8" shower outlet
- slide-on rosettes Ø 60 mm
- 1/2" connection
- gauge 150 mm - 15 mm
- max. flow 16.7 l/min at 3 bar flow pressure

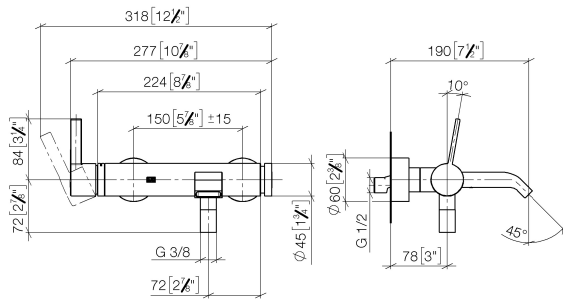
Intrinsic protection against back flow.

Note: Local building codes may require the use of an anti-scald device. Please refer to remote pressure balance valve (35 910 970 90)

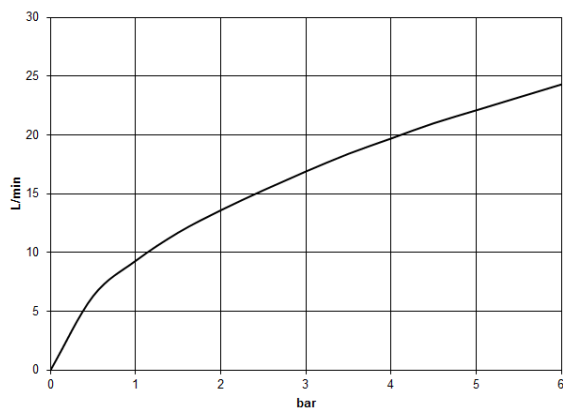
| | | |
|---|-----------------------|--------------------|
|  | Matte Black | 33 200 671-33 0010 |
|  | Chrome | 33 200 671-00 0010 |
|  | Brushed Platinum | 33 200 671-06 0010 |
|  | Dark Chrome | 33 200 671-19 0010 |
|  | Brushed Chrome | 33 200 671-93 0010 |
|  | Brushed Dark Platinum | 33 200 671-99 0010 |

33 200 671 Product version from 4/1/2024

mm [inches]



Flow rate chart



Codes & Standards

ADA

ASME A112.18.1

cUPC



IMO Single-lever bath mixer for wall mounting without shower set - Matte Black

IMO

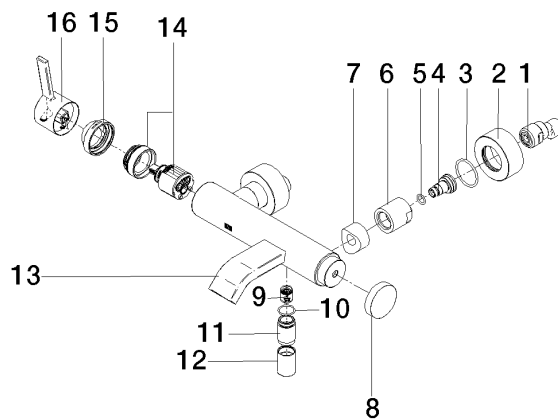
33 200 671 Product version from 4/1/2024

Certificates and sustainability

IAPMO_4976 (

33 200 671 Product version from 4/1/2024

Parts for other
finishes can be found
here: [Chrome](#)



Spare parts list

| No. | Item Number | Name | Quantity used | Delivery time |
|--|--------------------|---------------------|---------------|---------------|
| 13 | 90 11 06 228 00-33 | spout | 1.00 | - |
| Spare part can no longer be ordered, please order the replacement item | | | | |
| 2 | 09 27 62 004-33 | rosette | 2.00 | 30 |
| 9 | 90 23 01 141 00 90 | back-flow preventer | 1.00 | 2 |
| 8 | 09 20 62 031-33 | handle | 1.00 | 30 |
| 12 | 90 21 02 069 00-33 | cover | 1.00 | 30 |
| 1 | 04 11 04 030 00 90 | connection | 1.00 | 2 |
| 15 | 09 28 30 032-33 | cover | 1.00 | 30 |
| 16 | 90 20 67 020 00-33 | handle | 1.00 | - |
| Spare part can no longer be ordered, please order the replacement item | | | | |
| 10 | 90 14 10 032 00 90 | seal | 1.00 | 2 |
| 6 | 09 23 10 048-33 | nut | 2.00 | 30 |
| 14 | 90 15 05 046 01 90 | cartridge | 1.00 | 2 |
| 11 | 09 24 03 115 20-33 | nipple | 1.00 | 30 |
| 5 | 09 14 10 008 90 | seal | 2.00 | 2 |
| 4 | 09 29 05 005 20 90 | nipple | 2.00 | 60 |
| 7 | 09 18 40 059-33 | sleeve | 2.00 | 30 |
| 3 | 09 14 10 119 90 | seal | 2.00 | 2 |