

CYO Single-lever basin mixer with pop-up waste - Chrome

CYO






33 500 811



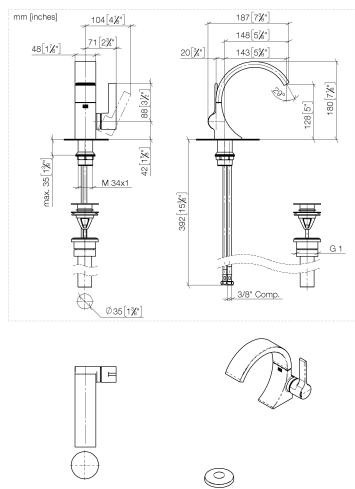
- 143mm projection
- 1 1/4" pop-up waste
- fixed spout
- rectangular, air-enriched flow
- height of mixer 180 mm
- height up to aerator 128 mm
- hole diameter 35 mm
- max. flow 4.5 l/min
- 2 x pressure hose with 3/8" cap nut
- lead-free
- This product can help a building meet the requirements of Green Building Rating Systems, e.g. LEED®, BREEAM®, DGNB

Only suitable for basins with an overflow.

Distance from centre of tap hole to wall min. 55 mm
or to front edge of basin min. 40 mm.

	Chrome	33 500 811-00 0010
	Brushed Platinum	33 500 811-06 0010
	Dark Chrome	33 500 811-19 0010
	Brushed Durabronze (23kt Gold)	33 500 811-28 0010
	Brushed Dark Platinum	33 500 811-99 0010

33 500 811



Codes & Standards

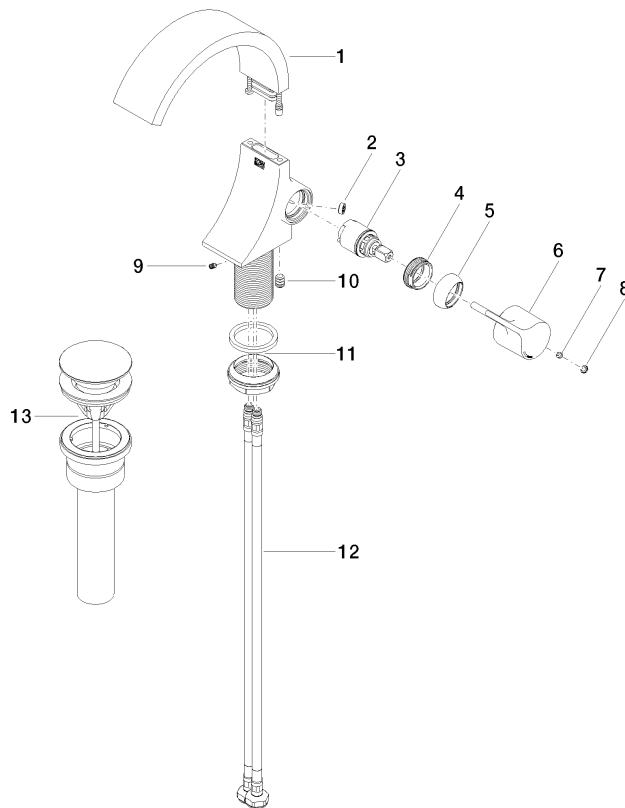
ADA	ASME A112.18.1	California Energy Commission (CEC)	cUPC
EPA WaterSense	NSF372	NSF61	WaterSense



Certificates and sustainability

IAPMO_8834	IAPMO_N-4976	IAPMO_6397	IAPMO_4976 (
------------	--------------	------------	--------------

33 500 811



Spare parts list

No.	Item Number	Name	Quantity used	Delivery time
1	90 11 70 012 01-00	spout	1.00	10
9	09 31 11 008 90	pin	1.00	2
12	04 30 04 102 00 90	High pressure hose 3/8" -	2.00	2
3	90 15 05 044 00 90	cartridge	1.00	2
2	09 23 01 172 90	flow reducer	1.00	2
8	90 31 20 087 00-00	plug	1.00	10
6	09 20 80 024-00	handle	1.00	10
5	09 28 30 021-00	cover	1.00	10
10	90 31 20 129 00 90	plug	1.00	2
4	09 24 04 266 90	nut	1.00	2
11	04 23 10 044 07 90	fixing set	1.00	2
13	10 125 970-00 0010	Basin Waste 1 1/4" - Chrome	1.00	2
7	90 31 11 030 00 90	pin	1.00	2