

META Single-lever basin mixer with pop-up waste - Brushed Platinum

META

33 501 660 Product version up to 1/23/2020

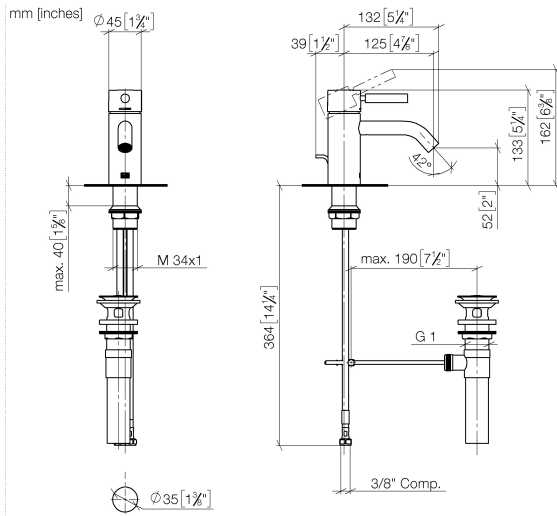


- 125mm projection
- 1 1/4" pop-up waste
- fixed spout
- circular, air-enriched flow
- height of mixer 133 mm
- height up to aerator 52 mm
- hole diameter 35 mm
- 2x screw-in M 8 x 1 pressure hose, leak-tested
- 2 x pressure hose with 3/8" cap nut
- max. flow 4.5 l/min
- lead-free
- This product can help a building meet the requirements of Green Building Rating Systems, e.g. LEED®, BREEAM®, DGNB

Only suitable for basins with an overflow.

	Brushed Platinum	33 501 660-06 0010
	Chrome	33 501 660-00 0010
	Dark Chrome	33 501 660-19 0010
	Light Gold	33 501 660-26 0010
	Brushed Light Gold	33 501 660-27 0010
	Matte Black	33 501 660-33 0010
	Brushed Bronze	33 501 660-42 0010
	Brushed Champagne (22kt Gold)	33 501 660-46 0010
	Champagne (22kt Gold)	33 501 660-47 0010
	Brushed Chrome	33 501 660-93 0010
	Brushed Dark Platinum	33 501 660-99 0010

33 501 660 Product version up to 1/23/2020



Codes & Standards

ADA	ASME A112.18.1	California Energy Commission (CEC)	cUPC
EPA WaterSense	NSF372	NSF61	WaterSense

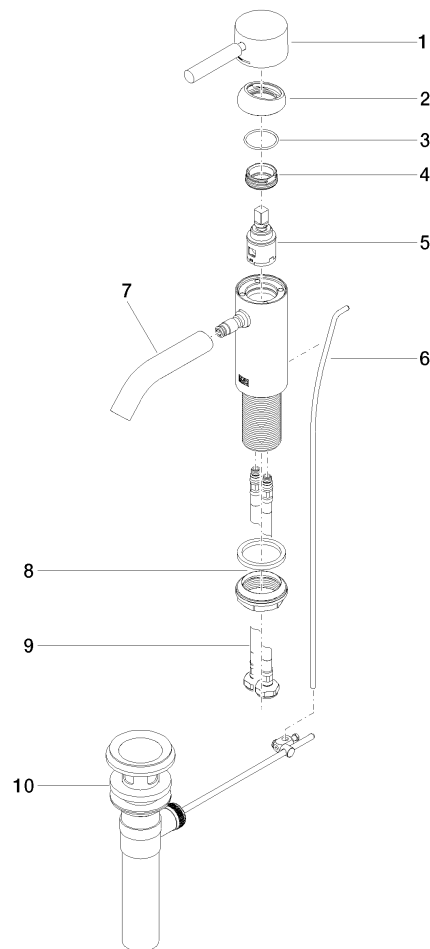


Certificates and sustainability

IAPMO_8834 IAPMO_N-4976 IAPMO_6397 IAPMO_4976 (

33 501 660 Product version up to 1/23/2020

Parts for other
finishes can be found
here: [Chrome](#)



Spare parts list

No.	Item Number	Name	Quantity used	Delivery time
	5 90 15 05 042 00 90	cartridge	1.00	2
	3 09 14 10 091 90	seal	1.00	2
	9 04 30 04 102 00 90	High pressure hose 3/8" -	2.00	2
	6 09 31 09 110-06	pull-rod	1.00	10
	4 09 24 04 266 90	nut	1.00	2
	2 09 28 30 041-06	cover	1.00	10
	8 04 23 10 044 07 90	fixing set	1.00	2
	1 90 20 66 002 00-06	handle	1.00	10
	7 90 11 06 206 01-06	spout	1.00	10
	10 90 11 01 023 00-06	pop-up waste	1.00	10