

META Single-lever basin mixer with pop-up waste - Matte Black

META

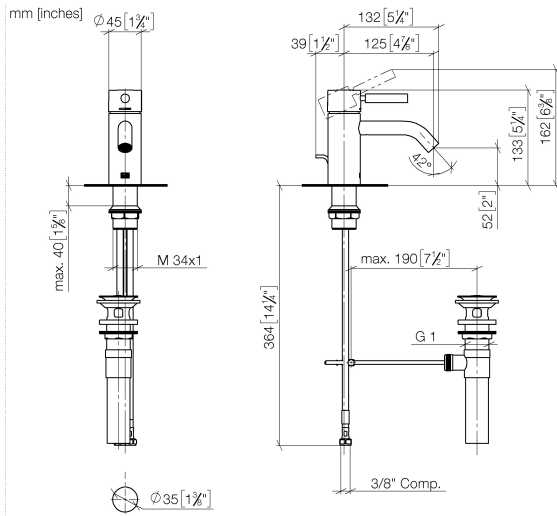
33 501 660    Product version up to 1/23/2020



- 125mm projection
  - 1 1/4" pop-up waste
  - fixed spout
  - circular, air-enriched flow
  - height of mixer 133 mm
  - height up to aerator 52 mm
  - hole diameter 35 mm
  - 2x screw-in M 8 x 1 pressure hose, leak-tested
  - 2 x pressure hose with 3/8" cap nut
  - max. flow 4.5 l/min
  - lead-free
  - This product can help a building meet the requirements of Green Building Rating Systems, e.g. LEED®, BREEAM®, DGNB
- Only suitable for basins with an overflow.

	Matte Black	33 501 660-33 0010
	Chrome	33 501 660-00 0010
	Brushed Platinum	33 501 660-06 0010
	Dark Chrome	33 501 660-19 0010
	Light Gold	33 501 660-26 0010
	Brushed Light Gold	33 501 660-27 0010
	Brushed Bronze	33 501 660-42 0010
	Brushed Champagne (22kt Gold)	33 501 660-46 0010
	Champagne (22kt Gold)	33 501 660-47 0010
	Brushed Chrome	33 501 660-93 0010
	Brushed Dark Platinum	33 501 660-99 0010

33 501 660 Product version up to 1/23/2020



### Codes & Standards

ADA	ASME A112.18.1	California Energy Commission (CEC)	cUPC
EPA WaterSense	NSF372	NSF61	WaterSense



### Certificates and sustainability

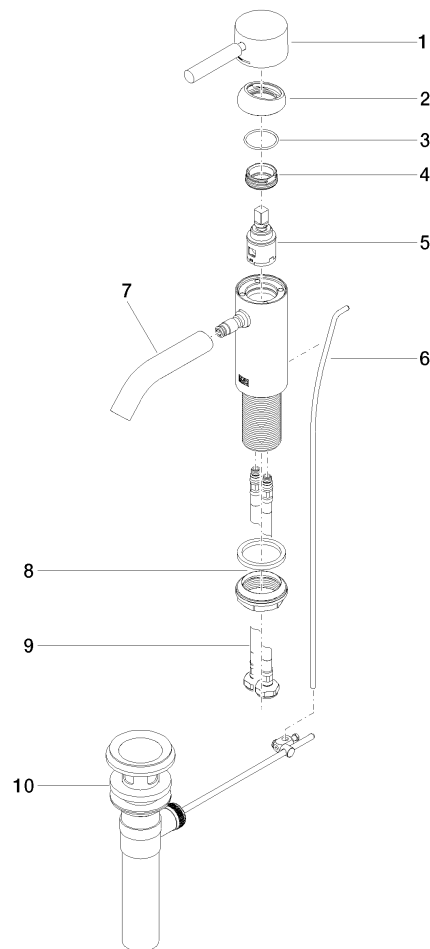
IAPMO\_8834      IAPMO\_N-4976      IAPMO\_6397      IAPMO\_4976 (

## META Single-lever basin mixer with pop-up waste - Matte Black

META

33 501 660 Product version up to 1/23/2020

Parts for other  
finishes can be found  
here: [Chrome](#)



### Spare parts list

No.	Item Number	Name	Quantity used	Delivery time
1	90 20 66 002 00-33	handle	1.00	30
5	90 15 05 042 00 90	cartridge	1.00	2
4	09 24 04 266 90	nut	1.00	2
3	09 14 10 091 90	seal	1.00	2
9	04 30 04 102 00 90	High pressure hose 3/8" -	2.00	2
6	09 31 09 110-33	pull-rod	1.00	30
8	04 23 10 044 07 90	fixing set	1.00	2
2	09 28 30 041-33	cover	1.00	30
7	90 11 06 206 01-33	spout	1.00	30
10	90 11 01 023 00-33	pop-up waste	1.00	30