

META Single-lever basin mixer with pop-up waste - Chrome

META

33 502 660 Product version up to 1/23/2020



- 135mm projection
- 1 1/4" pop-up waste
- fixed spout
- circular, air-enriched flow
- height of mixer 158 mm
- height up to aerator 77 mm
- hole diameter 35 mm
- 2 x pressure hose with 3/8" cap nut
- max. flow 4.5 l/min
- lead-free
- This product can help a building meet the requirements of Green Building Rating Systems, e.g. LEED®, BREEAM®, DGNB

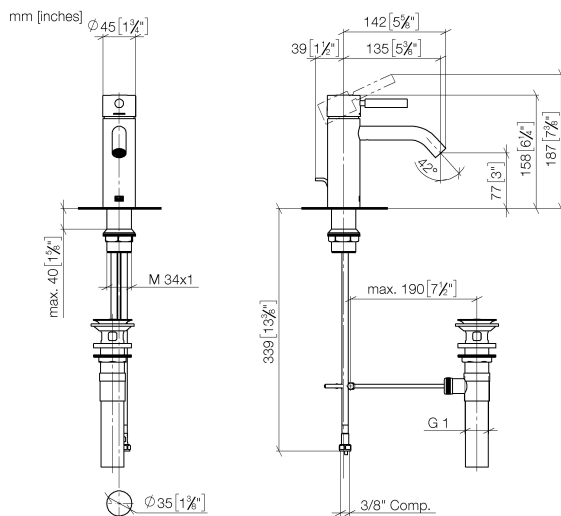
Only suitable for basins with an overflow.

| | | |
|---|-------------------------------|--------------------|
|  | Chrome | 33 502 660-00 0010 |
|  | Brushed Platinum | 33 502 660-06 0010 |
|  | Dark Chrome | 33 502 660-19 0010 |
|  | Light Gold | 33 502 660-26 0010 |
|  | Brushed Light Gold | 33 502 660-27 0010 |
|  | Matte Black | 33 502 660-33 0010 |
|  | Brushed Dark Brass | 33 502 660-39 0010 |
|  | Brushed Bronze | 33 502 660-42 0010 |
|  | Brushed Champagne (22kt Gold) | 33 502 660-46 0010 |
|  | Champagne (22kt Gold) | 33 502 660-47 0010 |
|  | Brushed Chrome | 33 502 660-93 0010 |
|  | Brushed Dark Platinum | 33 502 660-99 0010 |

META Single-lever basin mixer with pop-up waste - Chrome

META

33 502 660 Product version up to 1/23/2020



Codes & Standards

| | | | |
|----------------|----------------|------------------------------------|------------|
| ADA | ASME A112.18.1 | California Energy Commission (CEC) | cUPC |
| EPA WaterSense | NSF372 | NSF61 | WaterSense |



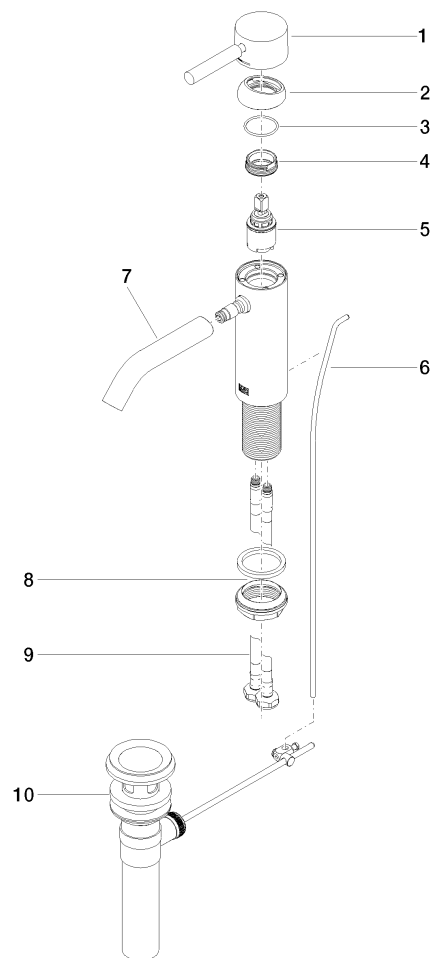
Certificates and sustainability

| | | | |
|--------------|------------|------------|--------------|
| IAPMO_N-4976 | IAPMO_6397 | IAPMO_8834 | IAPMO_4976 (|
|--------------|------------|------------|--------------|

META Single-lever basin mixer with pop-up waste - Chrome

META

33 502 660 Product version up to 1/23/2020



Spare parts list

| No. | Item Number | Name | Quantity used | Delivery time |
|-----|--------------------|---------------------------|---------------|---------------|
| 1 | 90 20 66 002 00-00 | handle | 1.00 | 10 |
| 3 | 09 14 10 091 90 | seal | 1.00 | 2 |
| 2 | 09 28 30 041-00 | cover | 1.00 | 10 |
| 4 | 09 24 04 266 90 | nut | 1.00 | 2 |
| 7 | 90 11 06 207 01-00 | spout | 1.00 | 10 |
| 6 | 09 31 09 110-00 | pull-rod | 1.00 | 10 |
| 8 | 04 23 10 044 07 90 | fixing set | 1.00 | 2 |
| 9 | 04 30 04 102 00 90 | High pressure hose 3/8" - | 2.00 | 2 |
| 5 | 90 15 05 044 00 90 | cartridge | 1.00 | 2 |
| 10 | 90 11 01 023 00-00 | pop-up waste | 1.00 | 10 |