

MEM Single-lever basin mixer with pop-up waste - Brushed Platinum

MEM

33 502 782 Product version from 9/1/2022



- 113mm projection
- 1 1/4" pop-up waste
- fixed spout
- rectangular, air-enriched flow
- height of mixer 284 mm
- height up to aerator 216 mm
- hole diameter 35 mm
- 2x screw-in M 10 x 1 pressure hose, leak-tested
- 2x US pressure hose, 3/8"
- max. flow 4.5 l/min
- lead-free
- This product can help a building meet the requirements of Green Building Rating Systems, e.g. LEED®, BREEAM®, DGNB

Only suitable for basins with an overflow.

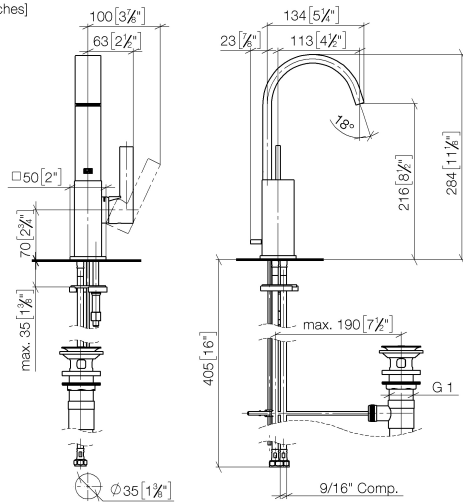
	Brushed Platinum	33 502 782-06 0010
	Chrome	33 502 782-00 0010
	Platinum	33 502 782-08 0010
	Dark Chrome	33 502 782-19 0010
	Brushed Durabronze (23kt Gold)	33 502 782-28 0010
	Brushed Dark Brass	33 502 782-39 0010
	Brushed Champagne (22kt Gold)	33 502 782-46 0010
	Champagne (22kt Gold)	33 502 782-47 0010
	Brushed Dark Platinum	33 502 782-99 0010

MEM Single-lever basin mixer with pop-up waste - Brushed Platinum

MEM

33 502 782 Product version from 9/1/2022

mm [inches]



Codes & Standards

ADA

California Energy
Commission
(CEC)

NSF372

NSF61

Certificates and sustainability

IAPMO_6397

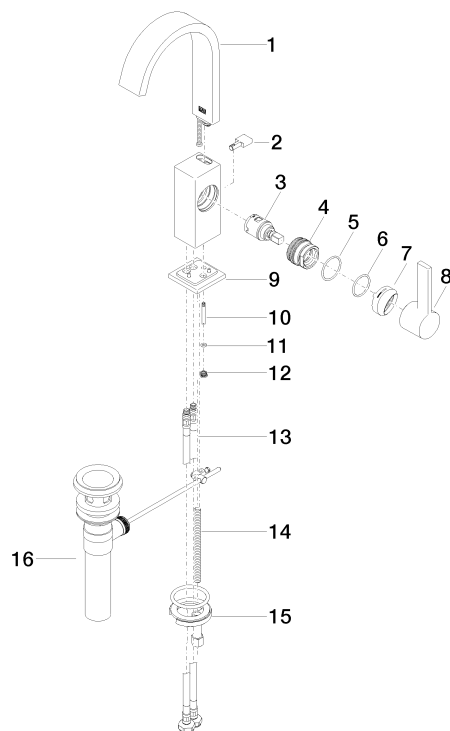
IAPMO_N-4976

MEM Single-lever basin mixer with pop-up waste - Brushed Platinum

MEM

33 502 782 Product version from 9/1/2022

Parts for other
finishes can be found
here: [Chrome](#)



Spare parts list

No.	Item Number	Name	Quantity used	Delivery time
	14 09 31 11 012 90	pin	1.00	2
	4 09 24 04 288 90	nut	1.00	2
	15 04 30 11 038 00 90	fixing set	1.00	2
	9 90 27 66 021 00-06	rosette	1.00	10
	2 09 20 78 032-06	handle	1.00	10
	10 09 31 09 080-06	pull-rod	1.00	10
	7 90 28 30 051 00-06	cover	1.00	10
	1 90 28 22 366 10-06	spout	1.00	10
	3 90 15 05 042 00 90	cartridge	1.00	2
	11 09 14 10 166 90	seal	1.00	2
	12 09 24 04 290 90	nipple	1.00	2
	5 09 14 10 137 90	seal	1.00	2
	8 90 20 86 004 00-06	handle	1.00	10
	13 04 30 04 102 00 90	High pressure hose 3/8" -	2.00	2
	16 90 11 01 023 00-06	pop-up waste	1.00	10
	6 90 14 10 063 00 90	seal	1.00	2