

META Single-lever basin mixer without pop-up waste - Brushed Champagne (22kt Gold)

META

33 529 660 Product version from 5/1/2022 to 4/1/2025



- 125mm projection
- With linear texture
- fixed spout
- circular, air-enriched flow
- height of mixer 135 mm
- height up to aerator 52 mm
- hole diameter 35 mm
- 2x screw-in M 8 x 1 pressure hose, leak-tested
- max. flow 4.5 l/min
- lead-free
- This product can help a building meet the requirements of Green Building Rating Systems, e.g. LEED®, BREEAM®, DGNB

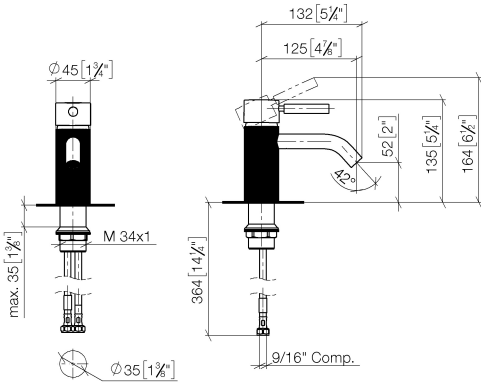
	Brushed Champagne (22kt Gold)	33 529 660-46 0010
	Chrome	33 529 660-00 0010
	Brushed Platinum	33 529 660-06 0010
	Light Gold	33 529 660-26 0010
	Brushed Light Gold	33 529 660-27 0010
	Matte Black	33 529 660-33 0010
	Brushed Dark Brass	33 529 660-39 0010
	Brushed Bronze	33 529 660-42 0010
	Champagne (22kt Gold)	33 529 660-47 0010
	Brushed Chrome	33 529 660-93 0010
	Brushed Dark Platinum	33 529 660-99 0010



META Single-lever basin mixer without pop-up waste - Brushed Champagne
(22kt Gold)

META

33 529 660 Product version from 5/1/2022 to 4/1/2025
mm [inches]



Codes & Standards

ASME A112.18.1	California Energy Commission (CEC)	cUPC	EPA WaterSense
NSF372	NSF61	WaterSense	



Certificates and sustainability

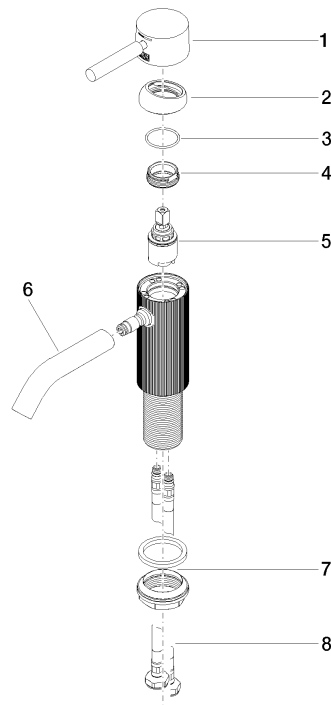
IAPMO_N-4976	IAPMO_6397	IAPMO_8834	IAPMO_4976 (
--------------	------------	------------	--------------

META Single-lever basin mixer without pop-up waste - Brushed Champagne (22kt Gold)

META

33 529 660 Product version from 5/1/2022 to 4/1/2025

Parts for other
finishes can be found
here: [Chrome](#)



Spare parts list

No.	Item Number	Name	Quantity used	Delivery time
7	04 23 10 044 07 90	fixing set	1.00	2
8	04 30 04 102 00 90	High pressure hose 3/8" -	2.00	2
1	90 20 66 029 00-46	handle	1.00	30
6	90 11 06 206 01-46	spout	1.00	30
3	09 14 10 091 90	seal	1.00	2
4	09 24 04 266 90	nut	1.00	2
5	90 15 05 044 00 90	cartridge	1.00	2
2	09 28 30 041-46	cover	1.00	30