

## LISSÉ Single-lever basin mixer with raised base without pop-up waste - Brushed Chrome



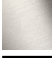




LISSÉ

33 537 845 Product version from 3/9/2016 to 10/31/2018



- 215mm projection
- fixed spout
- circular, air-enriched flow
- height of mixer 292 mm
- height up to aerator 241 mm
- hole diameter 35 mm
- 2 x pressure hose with 3/8" cap nut
- max. flow 4.5 l/min
- lead-free
- This product can help a building meet the requirements of Green Building Rating Systems, e.g. LEED®, BREEAM®, DGNB

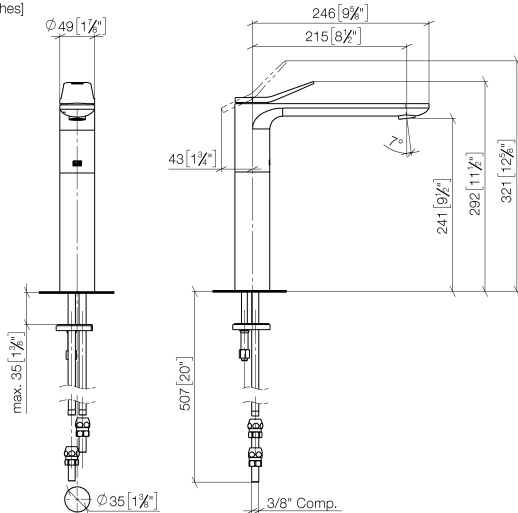
for use on countertop bowls

	Brushed Chrome	33 537 845-93 0010
	Chrome	33 537 845-00 0010
	Brushed Platinum	33 537 845-06 0010
	Dark Chrome	33 537 845-19 0010
	Brushed Light Gold	33 537 845-27 0010
	Matte Black	33 537 845-33 0010
	Brushed Dark Platinum	33 537 845-99 0010

## LISSE Single-lever basin mixer with raised base without pop-up waste - Brushed Chrome

LISSE

33 537 845 Product version from 3/9/2016 to 10/31/2018  
mm [inches]



### Codes & Standards

ADA	ASME A112.18.1	California Energy Commission (CEC)	cUPC
EPA WaterSense	NSF372	NSF61	WaterSense



### Certificates and sustainability

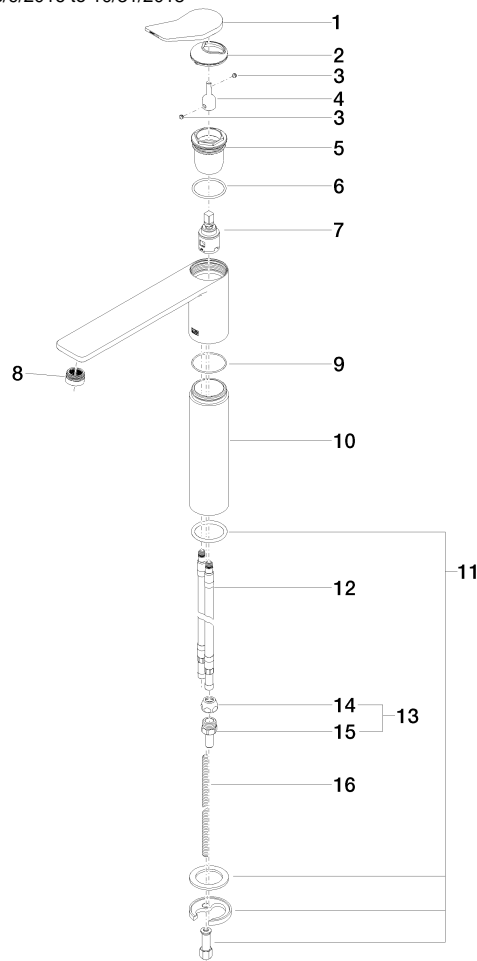
IAPMO\_N-4976    IAPMO\_6397    IAPMO\_4976 (    IAPMO\_8834

## LISSE Single-lever basin mixer with raised base without pop-up waste - Brushed Chrome

LISSE

33 537 845 Product version from 3/9/2016 to 10/31/2018

Parts for other  
finishes can be found  
here: [Chrome](#)





## LISSE Single-lever basin mixer with raised base without pop-up waste - Brushed Chrome

LISSE

33 537 845 Product version from 3/9/2016 to 10/31/2018

### Spare parts list

No.	Item Number	Name	Quantity used	Delivery time
13	04 24 04 222 00-93	adaptor	1.00	-
Spare part can no longer be ordered, please order the replacement item				
8	90 23 01 161 03-93	aerator	1.00	-
Spare part can no longer be ordered, please order the replacement item				
15	09 24 04 222 10-93	adaptor	2.00	-
Spare part can no longer be ordered, please order the replacement item				
14	04 23 30 031 01-07	threaded connector	2.00	60
7	90 15 05 042 00 90	cartridge	1.00	2
5	09 23 10 123 90	nut	1.00	2
9	09 14 10 108 90	seal	1.00	2
6	09 14 10 038 90	seal	1.00	2
11	04 30 11 038 75 90	fixing set	1.00	2
1	90 20 84 020 00-93	handle	1.00	20
4	09 29 06 117-07	extension	1.00	30
2	09 28 30 034 90	cover	1.00	2
10	09 28 22 306-93	sleeve	1.00	20
16	09 31 11 095 90	pin	1.00	2
12	04 30 04 098 00 90	hose	2.00	60
3	90 31 11 063 00 90	pin	2.00	2