

VAIA BAR TAP Single-lever mixer - Brushed Champagne (22kt Gold)
VAIA

33 805 809
Product version from 7/1/2023



- 167mm projection
- gauge mm
- pivotable spout 360°
- air-enriched flow
- height of mixer 306 mm
- height up to laminar flow regulator 224 mm
- hole diameter 35 mm
- 2 x pressure hose with 3/8" cap nut
- max. flow 5.6 l/min at 3 bar flow pressure
- lead-free
- This product can help a building meet the requirements of Green Building Rating Systems, e.g. LEED®, BREEAM®, DGNB

Not possible in combination with rinsing spray.

	Brushed Champagne (22kt Gold)	33 805 809-46 0010
	Chrome	33 805 809-00 0010
	Brushed Platinum	33 805 809-06 0010
	Platinum	33 805 809-08 0010
	Durabrass (23kt Gold)	33 805 809-09 0010
	Dark Chrome	33 805 809-19 0010
	Brushed Durabrass (23kt Gold)	33 805 809-28 0010
	Matte Black	33 805 809-33 0010
	Brushed Bronze	33 805 809-42 0010
	Champagne (22kt Gold)	33 805 809-47 0010
	Brushed Chrome	33 805 809-93 0010
	Brushed Dark Platinum	33 805 809-99 0010

Recommended miscellaneous

VAIA AIR SWITCH Control button - 10 713 809-46  
Brushed Champagne (22kt Gold)



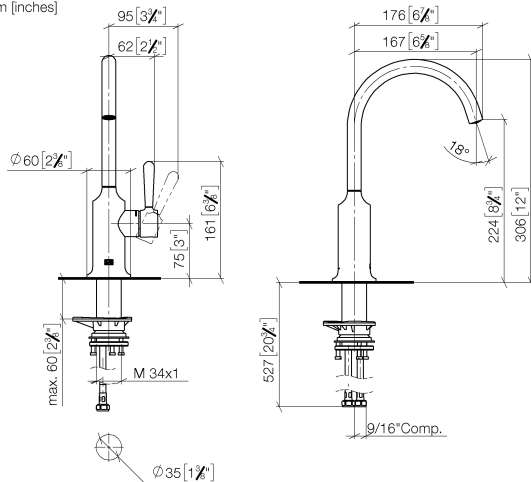
Recommended miscellaneous

VAIA Dispenser with rosette - 82 434 809-46  
Brushed Champagne (22kt Gold)



33 805 809 Product version from 7/1/2023

mm [inches]



## Codes & Standards

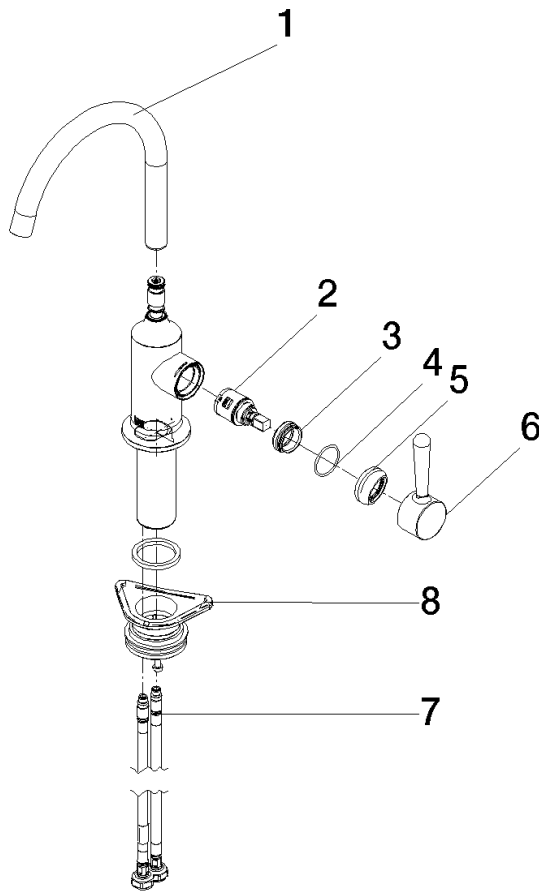
ADA	ASME A112.18.1	California Energy Commission (CEC)	cUPC
NSF372	NSF61		

## Certificates and sustainability

IAPMO\_N-4976 IAPMO\_6397 IAPMO\_4976 (

33 805 809 Product version from 7/1/2023

Parts for other  
finishes can be found  
here: [Chrome](#)



## Spare parts list

No.	Item Number	Name	Quantity used	Delivery time
7	04 30 04 103 00 90	hose	2.00	2
1	90 28 22 311 00-46	spout	1.00	30
5	90 28 30 052 00-46	cover	1.00	30
8	04 23 10 044 08 90	fixing set	1.00	2
6	90 20 80 050 00-46	handle	1.00	30
4	09 14 10 091 90	seal	1.00	2
3	09 24 04 266 90	nut	1.00	2
2	90 15 05 042 00 90	cartridge	1.00	2