

META SQUARE BAR TAP Single-lever mixer - Brushed Platinum

META SQUARE

33 805 861 Product version from 10/1/2024



- 166mm projection
- pivotable spout 360°
- Optional swivel limiter available with swivel limiter set 12 820 970 90
- air-enriched flow
- height of mixer 309 mm
- height up to aerator 234 mm
- hole diameter 35 mm
- 2 x pressure hose with 3/8" cap nut
- max. flow 5.7 l/min at 3 bar flow pressure
- lead-free
- This product can help a building meet the requirements of Green Building Rating Systems, e.g. LEED®, BREEAM®, DGNB

Not possible in combination with rinsing spray.

	Brushed Platinum	33 805 861-06 0010
	Chrome	33 805 861-00 0010
	Platinum	33 805 861-08 0010
	Durabrass (23kt Gold)	33 805 861-09 0010
	Dark Chrome	33 805 861-19 0010
	Brushed Durabrass (23kt Gold)	33 805 861-28 0010
	Matte Black	33 805 861-33 0010
	Brushed Bronze	33 805 861-42 0010
	Brushed Champagne (22kt Gold)	33 805 861-46 0010
	Champagne (22kt Gold)	33 805 861-47 0010
	Brushed Chrome	33 805 861-93 0010
	Brushed Dark Platinum	33 805 861-99 0010


Recommended miscellaneous

	Swivel limitation set -	12 820 970 90
---	--------------------------------	---------------

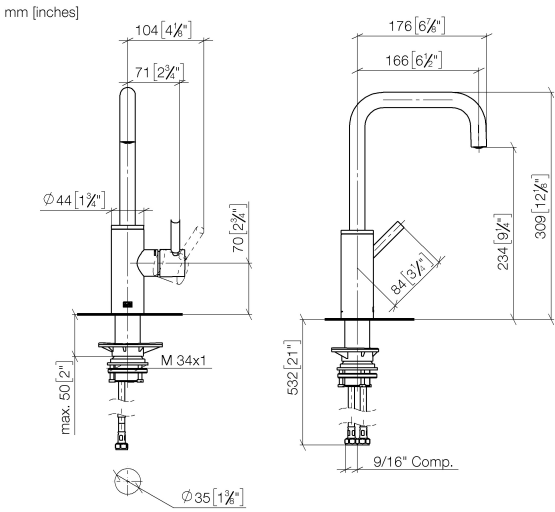
Recommended miscellaneous

	AIR SWITCH Control button - Brushed Platinum	10 713 970-06
---	---	---------------

Recommended miscellaneous

	Dispenser without rosette - Brushed Platinum	82 424 970-06
---	---	---------------

33 805 861 Product version from 10/1/2024

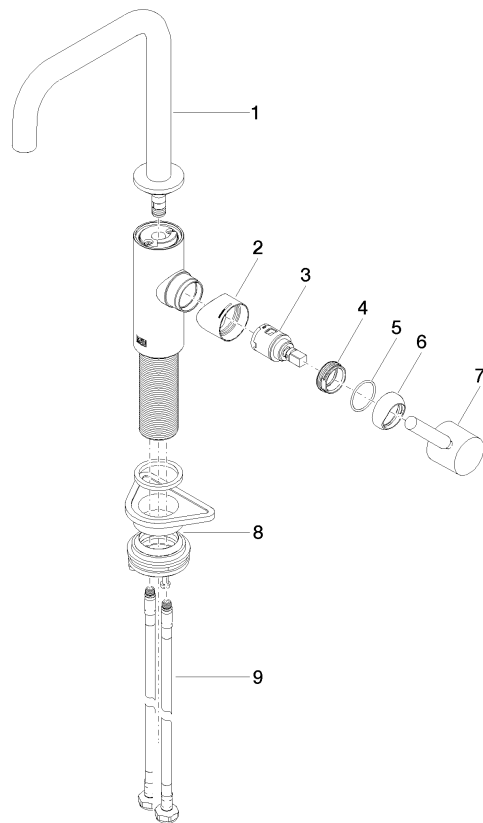


Codes & Standards

ADA	ASME A112.18.1	California Energy Commission (CEC)	cUPC
NSF372	NSF61		

Certificates and sustainability

IAPMO_6397	IAPMO_N-4976	IAPMO_4976 (
------------	--------------	--------------	--



Spare parts list

No.	Item Number	Name	Quantity used	Delivery time
7	90 20 66 003 00-06	handle	1.00	10
9	04 30 04 103 00 90	hose	2.00	2
1	90 28 22 285 01-06	spout	1.00	10
3	90 15 05 042 00 90	cartridge	1.00	2
4	09 24 04 266 90	nut	1.00	2
8	04 23 10 044 08 90	fixing set	1.00	2
2	09 19 86 012-06	cover	1.00	60
5	09 14 10 091 90	seal	1.00	2
6	90 28 30 052 00-06	cover	1.00	10