

META SQUARE BAR TAP Single-lever mixer - Platinum

META SQUARE

33 805 861
Product version from 10/1/2024



- 166mm projection
 - pivotable spout 360°
 - Optional swivel limiter available with swivel limiter set 12 820 970 90
 - air-enriched flow
 - height of mixer 309 mm
 - height up to aerator 234 mm
 - hole diameter 35 mm
 - 2 x pressure hose with 3/8" cap nut
 - max. flow 5.7 l/min at 3 bar flow pressure
 - lead-free
 - This product can help a building meet the requirements of Green Building Rating Systems, e.g. LEED®, BREEAM®, DGNB
- Not possible in combination with rinsing spray.

	Platinum	33 805 861-08 0010
	Chrome	33 805 861-00 0010
	Brushed Platinum	33 805 861-06 0010
	Durabronze (23kt Gold)	33 805 861-09 0010
	Dark Chrome	33 805 861-19 0010
	Brushed Durabronze (23kt Gold)	33 805 861-28 0010
	Matte Black	33 805 861-33 0010
	Brushed Bronze	33 805 861-42 0010
	Brushed Champagne (22kt Gold)	33 805 861-46 0010
	Champagne (22kt Gold)	33 805 861-47 0010
	Brushed Chrome	33 805 861-93 0010
	Brushed Dark Platinum	33 805 861-99 0010

Recommended miscellaneous

	Swivel limitation set -	12 820 970 90
--	--------------------------------	---------------

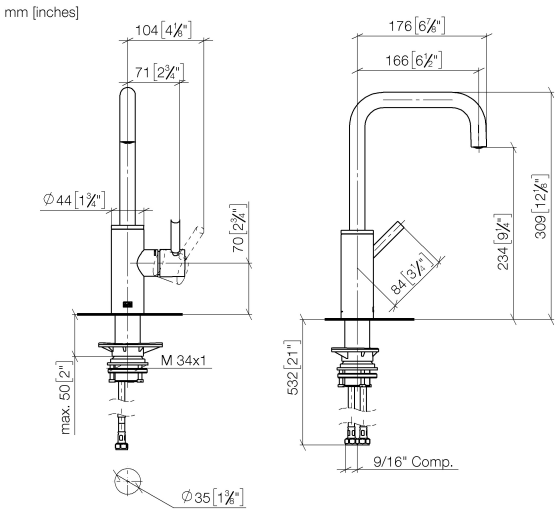
Recommended miscellaneous

	AIR SWITCH Control button - Platinum	10 713 970-08
--	---	---------------

Recommended miscellaneous

	Dispenser without rosette - Platinum	82 424 970-08
--	---	---------------

33 805 861 Product version from 10/1/2024

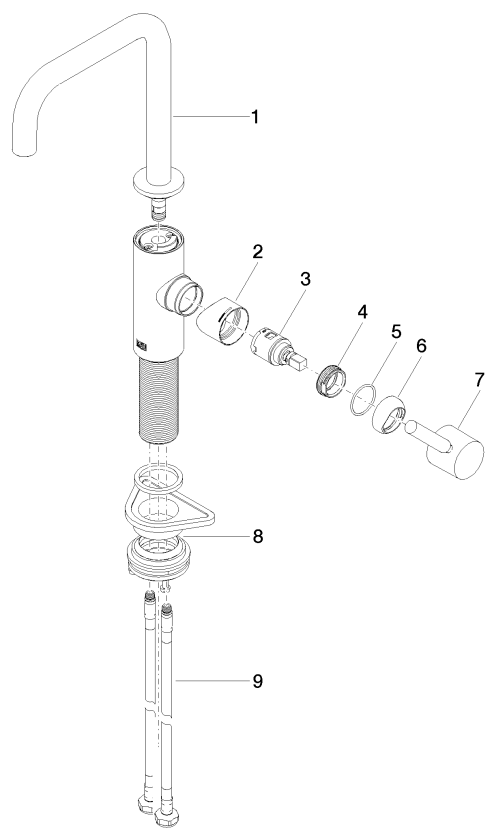


Codes & Standards

ADA	ASME A112.18.1	California Energy Commission (CEC)	cUPC
NSF372	NSF61		

Certificates and sustainability

IAPMO_6397	IAPMO_N-4976	IAPMO_4976 (
------------	--------------	--------------



Spare parts list

No.	Item Number	Name	Quantity used	Delivery time
7	90 20 66 003 00-08	handle	1.00	40
2	09 19 86 012-08	cover	1.00	60
1	90 28 22 285 01-08	spout	1.00	40
3	90 15 05 042 00 90	cartridge	1.00	2
9	04 30 04 103 00 90	hose	2.00	2
4	09 24 04 266 90	nut	1.00	2
8	04 23 10 044 08 90	fixing set	1.00	2
5	09 14 10 091 90	seal	1.00	2
6	90 28 30 052 00-08	cover	1.00	40