

META SQUARE BAR TAP Single-lever mixer - Brushed Dark Platinum

META SQUARE

33 805 861 Product version from 10/1/2024



- 166mm projection
- pivotable spout 360°
- Optional swivel limiter available with swivel limiter set 12 820 970 90
- air-enriched flow
- height of mixer 309 mm
- height up to aerator 234 mm
- hole diameter 35 mm
- 2 x pressure hose with 3/8" cap nut
- max. flow 5.7 l/min at 3 bar flow pressure
- lead-free
- This product can help a building meet the requirements of Green Building Rating Systems, e.g. LEED®, BREEAM®, DGNB

Not possible in combination with rinsing spray.

| | | |
|---|-------------------------------|--------------------|
|  | Brushed Dark Platinum | 33 805 861-99 0010 |
|  | Chrome | 33 805 861-00 0010 |
|  | Brushed Platinum | 33 805 861-06 0010 |
|  | Platinum | 33 805 861-08 0010 |
|  | Durabrand (23kt Gold) | 33 805 861-09 0010 |
|  | Dark Chrome | 33 805 861-19 0010 |
|  | Brushed Durabrand (23kt Gold) | 33 805 861-28 0010 |
|  | Matte Black | 33 805 861-33 0010 |
|  | Brushed Bronze | 33 805 861-42 0010 |
|  | Brushed Champagne (22kt Gold) | 33 805 861-46 0010 |
|  | Champagne (22kt Gold) | 33 805 861-47 0010 |
|  | Brushed Chrome | 33 805 861-93 0010 |

Recommended miscellaneous

Swivel limitation set - 12 820 970 90



Recommended miscellaneous

AIR SWITCH Control button - 10 713 970-99
Brushed Dark Platinum

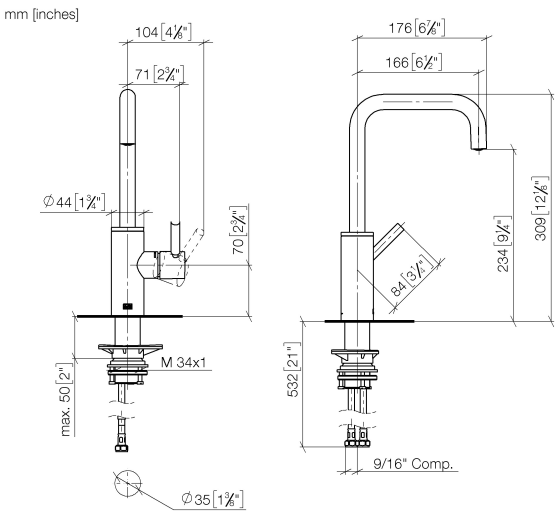


Recommended miscellaneous

Dispenser without rosette - 82 424 970-99
Brushed Dark Platinum



33 805 861 Product version from 10/1/2024

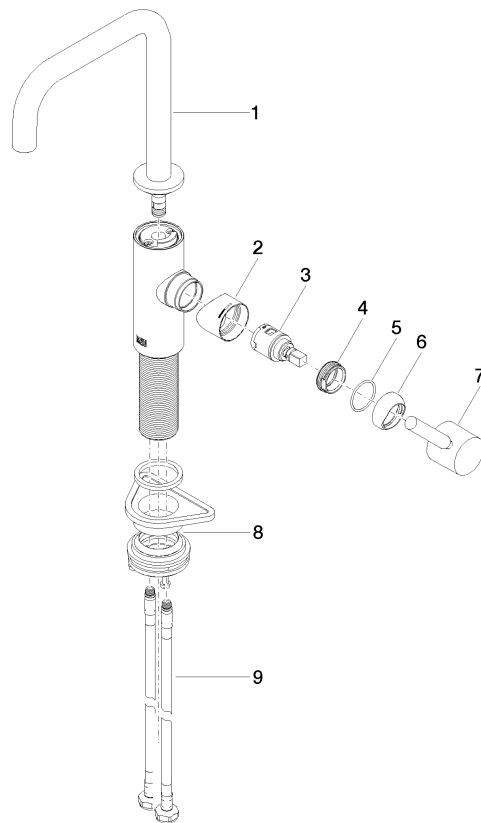


Codes & Standards

| | | | |
|--------|----------------|------------------------------------|------|
| ADA | ASME A112.18.1 | California Energy Commission (CEC) | cUPC |
| NSF372 | NSF61 | | |

Certificates and sustainability

IAPMO_6397 IAPMO_N-4976 IAPMO_4976 (



Spare parts list

| No. | Item Number | Name | Quantity used | Delivery time |
|-----|--------------------|------------|---------------|---------------|
| 4 | 09 24 04 266 90 | nut | 1.00 | 2 |
| 2 | 09 19 86 012-99 | cover | 1.00 | 60 |
| 7 | 90 20 66 003 00-99 | handle | 1.00 | 20 |
| 3 | 90 15 05 042 00 90 | cartridge | 1.00 | 2 |
| 9 | 04 30 04 103 00 90 | hose | 2.00 | 2 |
| 1 | 90 28 22 285 01-99 | spout | 1.00 | 20 |
| 8 | 04 23 10 044 08 90 | fixing set | 1.00 | 2 |
| 5 | 09 14 10 091 90 | seal | 1.00 | 2 |
| 6 | 90 28 30 052 00-99 | cover | 1.00 | 20 |