

TARA BAR TAP Single-lever mixer - Matte Black

TARA

33 805 888



- 166mm projection
- pivotable spout 360°
- air-enriched flow
- height of mixer 302 mm
- height up to aerator 185 mm
- hole diameter 35 mm
- 2 x pressure hose with 3/8" cap nut
- max. flow 5.7 l/min at 3 bar flow pressure
- lead-free
- This product can help a building meet the requirements of Green Building Rating Systems, e.g. LEED®, BREEAM®, DGNB

Not possible in combination with rinsing spray.

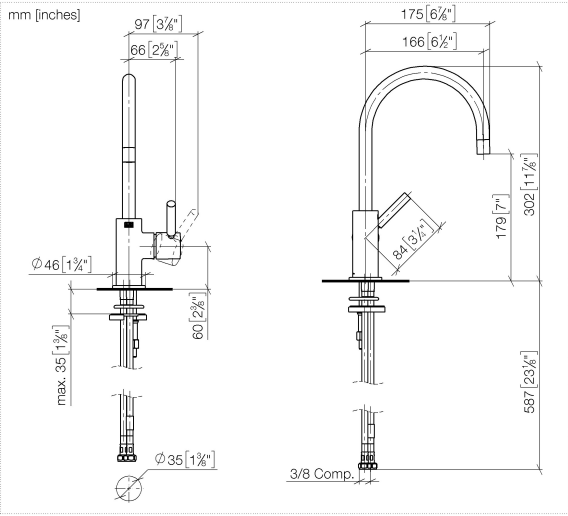
| | | |
|---|-------------------------------|--------------------|
|  | Matte Black | 33 805 888-33 0010 |
|  | Chrome | 33 805 888-00 0010 |
|  | Brushed Platinum | 33 805 888-06 0010 |
|  | Platinum | 33 805 888-08 0010 |
|  | Durabrand (23kt Gold) | 33 805 888-09 0010 |
|  | Dark Chrome | 33 805 888-19 0010 |
|  | Brushed Durabrand (23kt Gold) | 33 805 888-28 0010 |
|  | Brushed Bronze | 33 805 888-42 0010 |
|  | Brushed Champagne (22kt Gold) | 33 805 888-46 0010 |
|  | Champagne (22kt Gold) | 33 805 888-47 0010 |
|  | Brushed Chrome | 33 805 888-93 0010 |
|  | Brushed Dark Platinum | 33 805 888-99 0010 |

Recommended miscellaneous

AIR SWITCH Control button - Matte Black 10 713 970-33



33 805 888



Codes & Standards

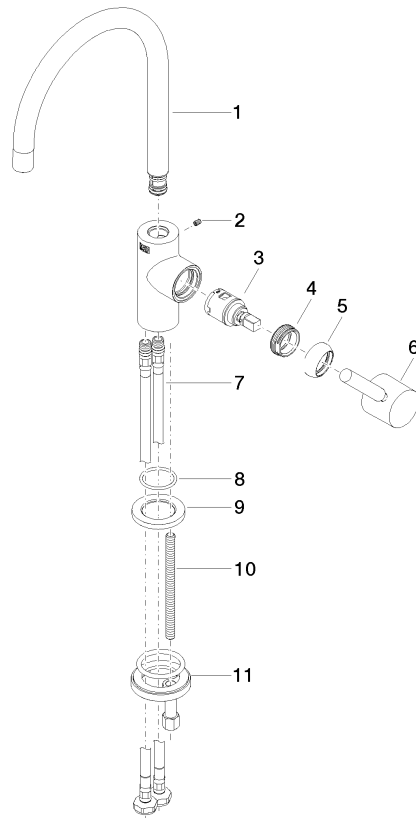
| | | | |
|--------|----------------|------------------------------------|------|
| ADA | ASME A112.18.1 | California Energy Commission (CEC) | cUPC |
| NSF372 | NSF61 | | |

Certificates and sustainability

| | | |
|------------|--------------|--------------|
| IAPMO_6397 | IAPMO_N-4976 | IAPMO_4976 (|
|------------|--------------|--------------|

33 805 888

Parts for other
finishes can be found
here: [Chrome](#)



Spare parts list

| No. | Item Number | Name | Quantity used | Delivery time |
|-----|-----------------------|------------|---------------|---------------|
| | 10 09 31 11 012 90 | pin | 1.00 | 2 |
| | 9 09 27 85 001-33 | rosette | 1.00 | 2 |
| | 7 04 30 04 107 00 90 | hose | 2.00 | 2 |
| | 6 90 20 66 003 00-33 | handle | 1.00 | 30 |
| | 8 09 14 10 118 90 | seal | 1.00 | 2 |
| | 3 90 15 05 042 00 90 | cartridge | 1.00 | 2 |
| | 1 90 28 22 393 01-33 | spout | 1.00 | 30 |
| | 2 09 31 11 008 90 | pin | 1.00 | 2 |
| | 5 09 28 30 021-33 | cover | 1.00 | 30 |
| | 11 04 30 11 038 64 90 | fixing set | 1.00 | 2 |
| | 4 09 24 04 266 90 | nut | 1.00 | 2 |