

VAIA Single-lever mixer for rinsing/Profi spray - Chrome

VAIA


33 810 809 Product version from 7/1/2023




- 202mm projection
 - pivotable spout 360°
 - air-enriched flow
 - max. flow 5.7 l/min at 3 bar flow pressure
 - lead-free
 - This product can help a building meet the requirements of Green Building Rating Systems, e.g. LEED®, BREEAM®, DGNB
- Single-lever mixer for combining with rinsing/Profi spray only

	Chrome	33 810 809-00 0010
	Brushed Platinum	33 810 809-06 0010
	Platinum	33 810 809-08 0010
	Durabrass (23kt Gold)	33 810 809-09 0010
	Dark Chrome	33 810 809-19 0010
	Brushed Durabrass (23kt Gold)	33 810 809-28 0010
	Matte Black	33 810 809-33 0010
	Brushed Bronze	33 810 809-42 0010
	Brushed Champagne (22kt Gold)	33 810 809-46 0010
	Champagne (22kt Gold)	33 810 809-47 0010
	Brushed Chrome	33 810 809-93 0010
	Brushed Dark Platinum	33 810 809-99 0010

Recommended miscellaneous

	VAIA Dispenser with rosette - Chrome	82 434 809-00
---	---	---------------

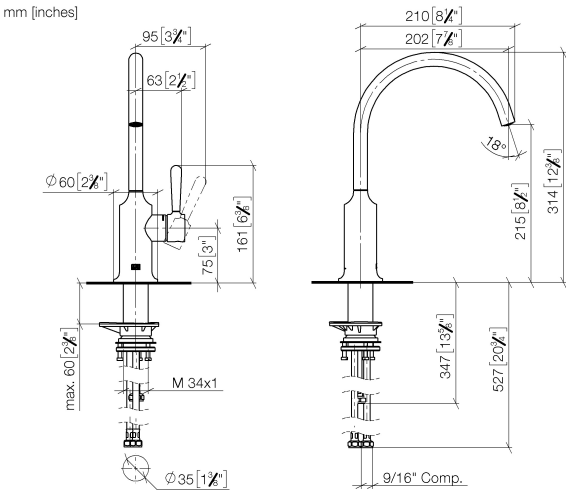
Recommended miscellaneous

	VAIA Rinsing spray set - Chrome	27 718 809-00
---	--	---------------

Recommended miscellaneous

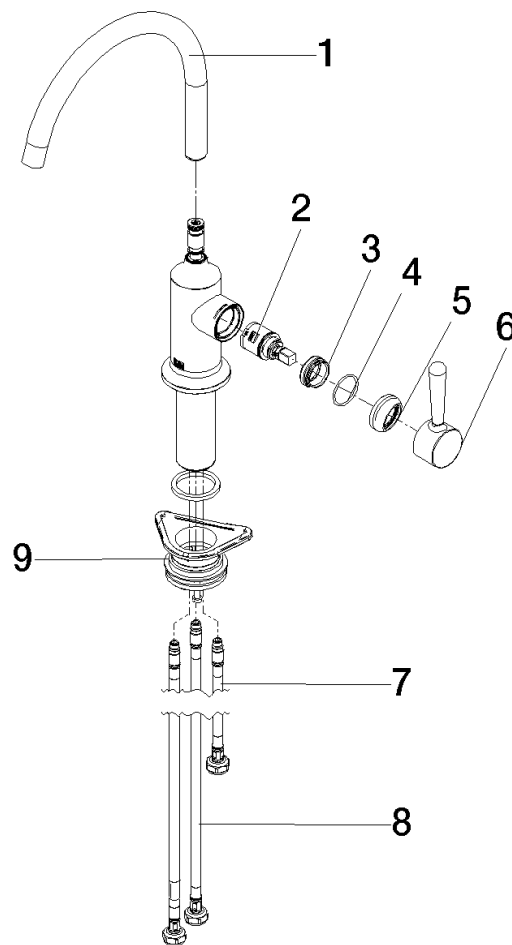
	VAIA AIR SWITCH Control button - Chrome	10 713 809-00
---	--	---------------

33 810 809 Product version from 7/1/2023



Codes & Standards			
ADA	ASME A112.18.1	California Energy Commission (CEC)	cUPC
NSF372	NSF61		

Certificates and sustainability		
IAPMO_N-4976	IAPMO_6397	IAPMO_4976 (



Spare parts list

No.	Item Number	Name	Quantity used	Delivery time
7	04 30 04 100 00 90	hose	1.00	2
5	90 28 30 052 00-00	cover	1.00	10
8	04 30 04 103 00 90	hose	2.00	2
2	90 15 05 042 00 90	cartridge	1.00	2
1	90 28 22 313 00-00	spout	1.00	10
3	09 24 04 266 90	nut	1.00	2
9	04 23 10 044 08 90	fixing set	1.00	2
6	90 20 80 050 00-00	handle	1.00	10
4	09 14 10 091 90	seal	1.00	2