

VAIA Single-lever mixer for rinsing/Profi spray - Dark Chrome

VAIA

33 810 809    Product version from 7/1/2023



- 202mm projection
  - pivotable spout 360°
  - air-enriched flow
  - max. flow 5.7 l/min at 3 bar flow pressure
  - lead-free
  - This product can help a building meet the requirements of Green Building Rating Systems, e.g. LEED®, BREEAM®, DGNB
- Single-lever mixer for combining with rinsing/Profi spray only

|   |                               |                    |
|---|-------------------------------|--------------------|
|    | Dark Chrome                   | 33 810 809-19 0010 |
|    | Chrome                        | 33 810 809-00 0010 |
|    | Brushed Platinum              | 33 810 809-06 0010 |
|    | Platinum                      | 33 810 809-08 0010 |
|    | Durabrass (23kt Gold)         | 33 810 809-09 0010 |
|    | Brushed Durabrass (23kt Gold) | 33 810 809-28 0010 |
|    | Matte Black                   | 33 810 809-33 0010 |
|    | Brushed Bronze                | 33 810 809-42 0010 |
|    | Brushed Champagne (22kt Gold) | 33 810 809-46 0010 |
|   | Champagne (22kt Gold)         | 33 810 809-47 0010 |
|  | Brushed Chrome                | 33 810 809-93 0010 |
|  | Brushed Dark Platinum         | 33 810 809-99 0010 |

Recommended miscellaneous

VAIA AIR SWITCH Control button - 10 713 809-19  
Dark Chrome



Recommended miscellaneous

VAIA Dispenser with rosette - Dark Chrome 82 434 809-19



Recommended miscellaneous

VAIA Rinsing spray set - Dark Chrome 27 718 809-19





VAIA Single-lever mixer for rinsing/Profi spray - Dark Chrome

VAIA

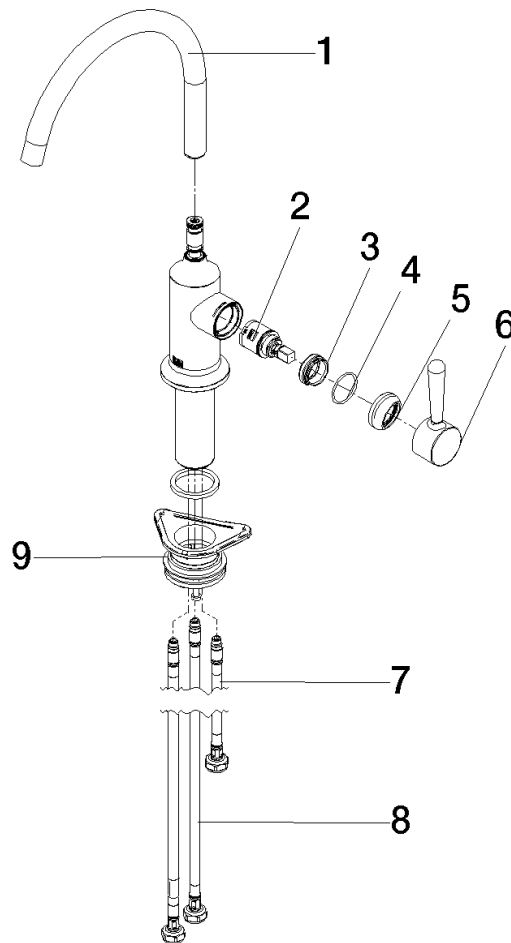
33 810 809    Product version from 7/1/2023

| Codes & Standards |                |                                    |      |
|-------------------|----------------|------------------------------------|------|
| ADA               | ASME A112.18.1 | California Energy Commission (CEC) | cUPC |
| NSF372            | NSF61          |                                    |      |

| Certificates and sustainability |            |              |  |
|---------------------------------|------------|--------------|--|
| IAPMO_N-4976                    | IAPMO_6397 | IAPMO_4976 ( |  |

33 810 809 Product version from 7/1/2023

Parts for other  
finishes can be found  
here: [Chrome](#)



## Spare parts list

| No. | Item Number        | Name       | Quantity used | Delivery time |
|-----|--------------------|------------|---------------|---------------|
| 3   | 09 24 04 266 90    | nut        | 1.00          | 2             |
| 6   | 90 20 80 050 00-19 | handle     | 1.00          | 20            |
| 4   | 09 14 10 091 90    | seal       | 1.00          | 2             |
| 5   | 90 28 30 052 00-19 | cover      | 1.00          | 20            |
| 7   | 04 30 04 100 00 90 | hose       | 1.00          | 2             |
| 2   | 90 15 05 042 00 90 | cartridge  | 1.00          | 2             |
| 8   | 04 30 04 103 00 90 | hose       | 2.00          | 2             |
| 1   | 90 28 22 313 00-19 | spout      | 1.00          | 20            |
| 9   | 04 23 10 044 08 90 | fixing set | 1.00          | 2             |