

ELIO Single-lever mixer Pull-out - Chrome

ELIO

33 840 790 Product version from 12/31/2013 to 5/15/2020



- 235mm projection
- pivotable spout 360°
- air-enriched flow
- height of mixer 337 mm
- height up to aerator 300 mm
- hole diameter 35 mm
- 2 x pressure hose with 3/8" cap nut
- fabric braided hose 1500 mm
- max. flow 5.7 l/min at 3 bar flow pressure
- lead-free
- This product can help a building meet the requirements of Green Building Rating Systems, e.g. LEED®, BREEAM®, DGNB

Not possible in combination with rinsing spray.

	Chrome	33 840 790-00 0010
	Brushed Platinum	33 840 790-06 0010
	Platinum	33 840 790-08 0010
	Dark Chrome	33 840 790-19 0010
	Brushed Durabronze (23kt Gold)	33 840 790-28 0010
	Brushed Bronze	33 840 790-42 0010
	Brushed Champagne (22kt Gold)	33 840 790-46 0010
	Champagne (22kt Gold)	33 840 790-47 0010
	Brushed Chrome	33 840 790-93 0010
	Brushed Dark Platinum	33 840 790-99 0010

Recommended miscellaneous

Dispenser without rosette - Chrome

82 424 970-00



Recommended miscellaneous

AIR SWITCH Control button - Chrome

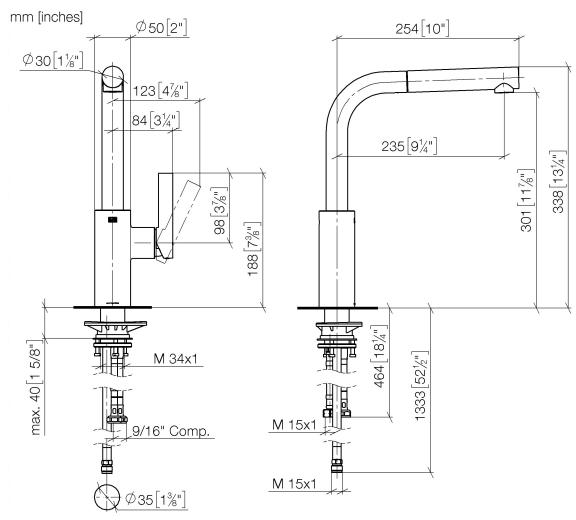
10 713 970-00



ELIO Single-lever mixer Pull-out - Chrome

ELIO

33 840 790 Product version from 12/31/2013 to 5/15/2020



Codes & Standards

ADA

California Energy
Commission
(CEC)

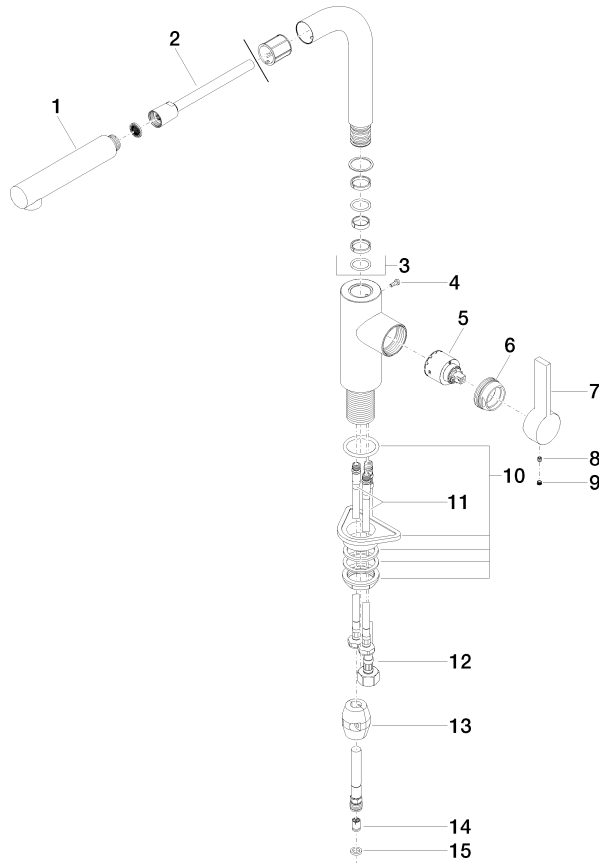
NSF372

NSF61

Certificates and sustainability

IAPMO_6397

IAPMO_N-4976



Spare parts list

No.	Item Number	Name	Quantity used	Delivery time
7	09 20 79 040-00	handle	1.00	10
11	04 30 04 106 00 90	hose	1.00	2
12	04 30 04 029 00 90	hose	1.00	2
4	09 30 30 054 90	screw	1.00	2
1	04 12 11 106 00-00	shower	1.00	10
3	90 28 22 186 00-00	spout	1.00	10
10	04 23 10 044 02 90	fixing set	1.00	2
13	04 21 50 005 00 90	accessories	1.00	2
14	09 23 01 096 90	back-flow preventer	1.00	2
6	09 24 04 141-00	nut	1.00	10
9	90 31 20 109 00 90	plug	1.00	2
8	90 31 11 030 00 90	pin	1.00	2
15	90 14 20 019 00 90	seal	1.00	2
5	90 15 05 045 00 90	cartridge	1.00	2
2	90 30 02 062 00-00	hose	1.00	10