





TARA ULTRA Profi single-lever mixer - Platinum
TARA ULTRA

33 860 875
Product version up to 7/24/2018



- 240mm projection
  - pivotable 360°
  - air-enriched flow and spray flow
  - height of mixer 685 mm
  - height up to aerator 129 mm
  - hole diameter 35 mm
  - 2 x pressure hose with 3/8" cap nut
  - sprayface with anti-scaling system
  - max. flow 5.7 l/min at 3 bar flow pressure
  - lead-free
  - This product can help a building meet the requirements of Green Building Rating Systems, e.g. LEED®, BREEAM®, DGNB
- Intrinsic protection against back flow.
- Switch back and forth between aerator and spray mode while water is running.

	Platinum	33 860 875-08 0010
	Chrome	33 860 875-00 0010
	Brushed Platinum	33 860 875-06 0010
	Dark Chrome	33 860 875-19 0010
	Brushed Bronze	33 860 875-42 0010
	Brushed Chrome	33 860 875-93 0010
	Brushed Dark Platinum	33 860 875-99 0010

Recommended miscellaneous

AIR SWITCH Control button - Platinum
10 713 970-08

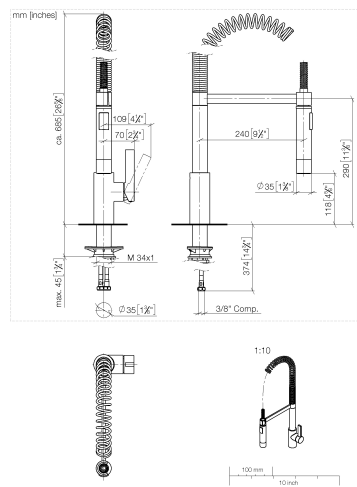




TARA ULTRA Profi single-lever mixer - Platinum

TARA ULTRA

33 860 875    Product version up to 7/24/2018



Flow rate chart



Codes & Standards

ADA	ASME A112.18.1	California Energy Commission (CEC)	cUPC
NSF372	NSF61		



TARA ULTRA Profi single-lever mixer - Platinum

TARA ULTRA

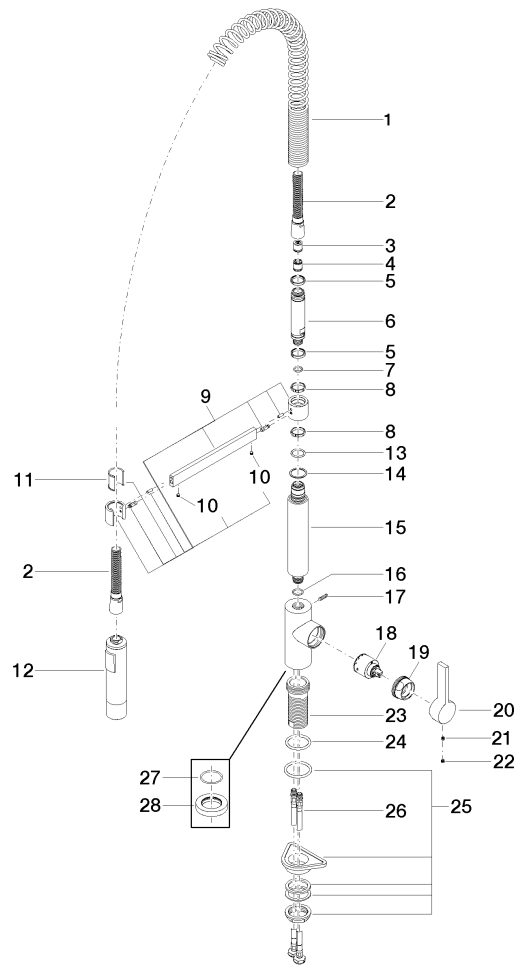
33 860 875    Product version up to 7/24/2018

Certificates and sustainability

IAPMO\_N-4976      IAPMO\_6397      IAPMO\_4976 (

33 860 875 Product version up to 7/24/2018

Parts for other  
finishes can be found  
here: [Chrome](#)



## Spare parts list

No.	Item Number	Name	Quantity used	Delivery time
	9 04 17 20 029 00-08	holder	1.00	40
	19 09 24 04 107-08	nut	1.00	40
	5 09 14 15 024 90	ring	2.00	2
	8 09 28 10 181 90	ring	2.00	2
	24 09 14 10 036 90	seal	1.00	2
	20 09 20 79 040-08	handle	1.00	40
	23 09 30 01 111 20 90	sleeve	1.00	2
	11 09 18 40 118 90	sleeve	1.00	2
	15 09 11 10 072 10-08	connection	1.00	40
	28 09 28 10 035-08	rosette	1.00	60
	6 09 30 01 067 10-08	adaptor	1.00	40
	3 90 23 01 080 00 90	back-flow preventer	1.00	2
	13 09 14 10 100 90	seal	1.00	2
	12 04 12 11 092 10-08	shower	1.00	40
	1 09 16 02 035 90	spring	1.00	2
	14 09 28 10 122 90	ring	1.00	2
	17 04 31 11 113 00 90	pin	1.00	2
	27 09 14 10 149 90	seal	1.00	2
	25 04 23 10 044 02 90	fixing set	1.00	2
	26 04 30 04 107 00 90	hose	2.00	2
	16 90 14 10 055 00 90	seal	1.00	2
	4 90 23 01 141 00 90	back-flow preventer	1.00	2
	2 90 30 02 065 00-08	hose	1.00	-
Spare part can no longer be ordered, please order the replacement item				
	21 90 31 11 030 00 90	pin	1.00	2
	7 90 14 10 077 00 90	seal	1.00	2
	10 90 31 11 112 00 90	pin	2.00	2
	22 90 31 20 109 00 90	plug	1.00	2
	18 90 15 05 045 00 90	cartridge	1.00	2