






- 240mm projection
  - pivotable 360°
  - air-enriched flow and spray flow
  - height of mixer 685 mm
  - height up to aerator 129 mm
  - hole diameter 35 mm
  - 2 x pressure hose with 3/8" cap nut
  - sprayface with anti-scaling system
  - max. flow 5.7 l/min at 3 bar flow pressure
  - lead-free
  - This product can help a building meet the requirements of Green Building Rating Systems, e.g. LEED®, BREEAM®, DGNB
- Intrinsic protection against back flow.
- Switch back and forth between aerator and spray mode while water is running.

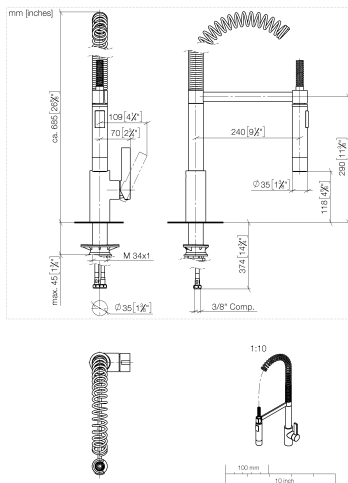
	Brushed Bronze	33 860 875-42 0010
	Chrome	33 860 875-00 0010
	Brushed Platinum	33 860 875-06 0010
	Platinum	33 860 875-08 0010
	Dark Chrome	33 860 875-19 0010
	Brushed Chrome	33 860 875-93 0010
	Brushed Dark Platinum	33 860 875-99 0010

### Recommended miscellaneous

**AIR SWITCH Control button -  
Brushed Bronze**

10 713 970-42





### Flow rate chart



### Codes & Standards

ADA	ASME A112.18.1	California Energy Commission (CEC)	cUPC
NSF372	NSF61		



TARA ULTRA Profi single-lever mixer - Brushed Bronze

TARA ULTRA

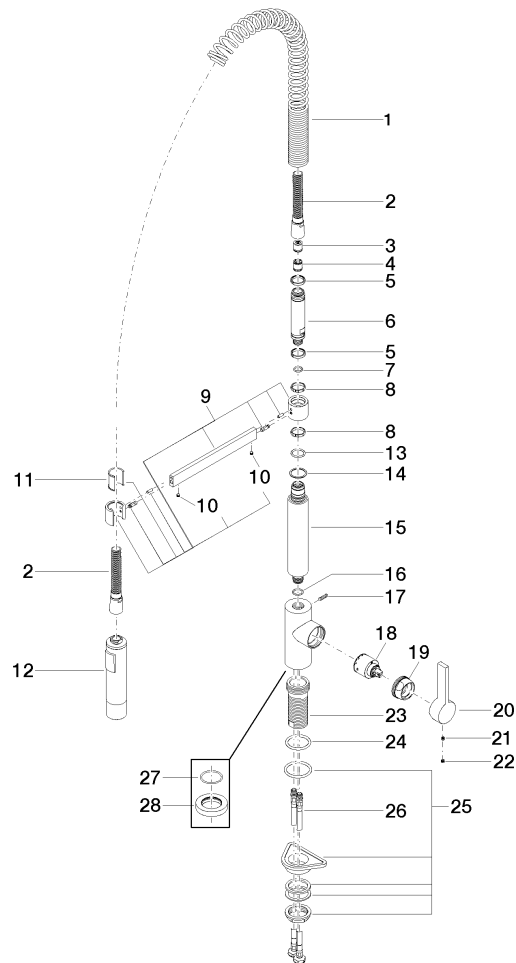
33 860 875    Product version from 6/1/2022

Certificates and sustainability

IAPMO\_N-4976      IAPMO\_6397      IAPMO\_4976 (

33 860 875 Product version from 6/1/2022

Parts for other  
finishes can be found  
here: [Chrome](#)



## Spare parts list

No.	Item Number	Name	Quantity used	Delivery time
22	90 31 20 109 00 90	plug	1.00	2
27	09 14 10 149 90	seal	1.00	2
20	09 20 79 040-42	handle	1.00	60
19	09 24 04 107-42	nut	1.00	60
3	09 23 01 046 90	back-flow preventer	1.00	2
26	04 30 04 106 00 90	hose	2.00	2
2	90 30 02 065 00-42	hose	1.00	30
21	90 31 11 030 00 90	pin	1.00	2
4	90 23 01 040 00 90	back-flow preventer	1.00	2
1	09 16 02 035 90	spring	1.00	2
28	09 28 10 035-42	rosette	1.00	-
Spare part can no longer be ordered, please order the replacement item				
25	04 23 10 044 02 90	fixing set	1.00	2
23	09 30 01 111 20 90	sleeve	1.00	2
24	09 14 10 036 90	seal	1.00	2
16	90 14 10 055 00 90	seal	1.00	2
14	09 28 10 122 90	ring	1.00	2
12	04 12 11 092 10-42	shower	1.00	60
15	09 11 10 072 10-42	connection	1.00	60
13	09 14 10 100 90	seal	1.00	2
7	90 14 10 077 00 90	seal	2.00	2
10	90 31 11 112 00 90	pin	1.00	2
18	90 15 05 045 00 90	cartridge	1.00	2
6	09 30 01 067 10-42	adaptor	1.00	60
11	09 18 40 118 90	sleeve	1.00	2
8	09 28 10 181 90	ring	1.00	2
17	04 31 11 113 00 90	pin	1.00	2
5	09 14 15 024 90	ring	1.00	2
9	04 17 20 029 00-42	holder	2.00	60